



CONVEYOR & TRANSMISSION LTD

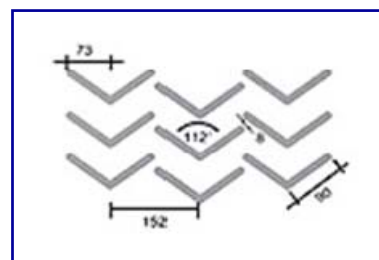
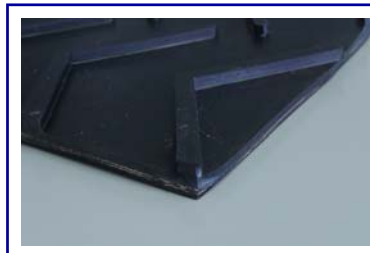
SPECIALISTS IN CONVEYOR AND TRANSMISSION PRODUCTS

BELT TECHNICAL DATA SHEET

EP160 2 PLY MULTI VEE MOR CC

BELT CONSTRUCTION: Two ply polyester/nylon, Nitrile MOR black rubber 3.0mm top cover with Multi V profile X 1.5mm bottom

Colour	Black
Belt Thickness	6.5
Top Cover Thickness	3.0mm
Bottom Cover Thickness	1.5mm
Belt Weight	11.0kg/m ²
Coefficient of friction (On steel)	0.40
Minimum pulley Diameter	250mm (at ambient temperature)
Minimum back flex Diameter	325mm (at ambient temperature)
Belt Rating	EP160
Temperature Range	-30 to + 120 Deg C
Food Rating	n/a
Carcass construction	Polyester/Nylon Flexible
Stock width	1530mm
Manufactured width	1530mm



Recommended Splice	Step join
Recommended fastener	Riv-nail or bolt hinged

Belt Characteristics	Multi V Profile cover—6mm high x 150mm wide. Suitable for incline applications Trough conveyors Nitrile MOR Timber oil resistant covers. Excellent operating temperature range.
-----------------------------	---

Typical Applications	Timber, wood chip Quarrying Incline conveying of granular product Top soil / compost conveying, Sand, pumice, stone and aggregate Waste recycling plants General heavy duty industrial conveying
-----------------------------	---

68A GREENMOUNT DRIVE, EAST TAMAKI, AUCKLAND, NEW ZEALAND.
PHONE 0064 (09) 274 3500 FAX 0064 (09) 274 3501
EMAIL: sales@contrans.co.nz

www.contrans.co.nz