

Contents

	Page		Page
Design considerations	2	Conveyor Rollers (cont.)	
Part number (descriptions)	3 – 4	Ø25 - Plastic	37
Ordering details	5 – 6	Steel (Galv.)	37
Roller Bearings		Stainless Steel	37
Ø20	7	Ø38 Steel (Galv.)	38
Ø25	7	Ø42 - Plastic	39
Ø32	8	Ø48 - Plastic	40 – 42
Ø35	8	Ø50 - Steel (Galv.)	43 – 45
Ø38	8	Plastic	45
Ø42	9	Stainless Steel	45
Ø48	10 - 11	Ø51 - Steel (Galv.)	45 – 47
Ø50	11 - 13	Stainless Steel	45 – 47
Ø51	14	Aluminium	45, 47
Ø60	15 - 17	Ø60 - Plastic	48
Ø75	18 – 19	Steel (Galv.)	49 – 53
Ø89	19 - 20	Stainless Steel	52 – 53
Ø114	21	Ø75 - Plastic	54
Reducer Bush	22	Steel (Galv.)	55
Sprockets		Ø89 - Plastic	56
Sprockets	23 – 25	Steel (Galv.)	57
Tooth Belt Pulley	25	Stainless Steel	57
Rollers		Aluminium	57
Ball Transfer	26	Driven Rollers	58 – 59
Multi Directional Rollers	27	Dynopipe Taper	60
Skate Wheels	28	Tapered elements for Ø50 tube	61
Support Wheel	28	Gravity Roller Frames	62
Blind Pin	29	Gravity Roller Stands	63
Drive Bands	30 – 31	Guide Rail	64
Grooves in Tube	32		
Drive Spools	33		
Roller Coating	34		
Conveyor Rollers			
Ø20 - Aluminium	35		
Plastic	35		
Stainless Steel	35		
Tapered elements for Ø20 tube	36		

Design Considerations

Details Needed

- Length of product _____
- Width of product _____
- Height of product _____
- Weight of product _____
- Speed required _____
- Environmental conditions _____

Rollers

A minimum of three rollers are required under the load at all times, products with uneven bases require more.

Ideal roller length is - load width + 50mm. This is a critical minimum with some types of plastic crates, but is of lesser importance with flat bottomed cartons.

Pallets usually flex under load causing only 1/3 of the rollers to carry the load, always allow for this.

Tapered rollers guarantee correct movement on bends.

Precision bearing rollers run smoothly at higher speeds for long periods but can have a greater resistance for manual movement.

Advantages of Plastic Rollers

- Light weight
- Noise dampening
- Resistance to corrosion
- Cleanliness

Temperature range of all our standard plastics is 5°C to 40°C, although they can be used down to -20°C with lowered impact resistance, or up to 60°C with reduced load.

Dynopipe is extra special high impact resistant PVC.

Shafts

Spring loaded shafts are the simplest design, giving quick and easy assembly and maintenance.

Male and female threaded shafts give higher load capacity and reduced vibration as they are secured direct to the conveyor frame. Female threads have the advantage of very simple assembly.

Spring loaded shafts are standard on most rollers.

Female threads are most common on driven rollers.

Large diameter rollers often have a fixed shaft.

Many other options are available to special order.

Remember – Gravity works for free
--

Part Number Description

Roller Bearings

e.g. **507SS – 12H(Z14DF)**

1 2 3 4 5

1. Tube Outside Diameter in nearest mm.

2. Bearing type

0 = Bush.

1 = Thermoplastic race, carbon steel balls.

2 = Thermoplastic race, stainless steel balls.

3 = Steel (unground).

4 = Steel (unground), thermoplastic housing.

5 = Precision bearing, zinc plated steel housing and bush.

6 = Precision bearing, zinc plated steel housing, thermoplastic bush.

7 = Precision bearing, thermoplastic housing and bush. Press fit.

8 = Precision bearing, thermoplastic housing and bush. Swage fit.

9 = Precision bearing to fit machined tube.

3. Bearing details

A = Antistatic.

B = Blind.

C = Caged balls.

G = Greased (extra).

HD = Heavy duty.

M = Machined.

SE = Sealed (extra).

SS = Stainless steel precision bearing.

T = Includes locator for tapered elements.

4. Shaft size + detail

H = Hexagonal across flats dimension.

Q = Ø10mm with 8mm across flats.

5. Extras

Z = Chain sprocket.

ZB = Toothed belt sprocket.

14 = Number of teeth.

S = Single.

D = Double.

F = Fixed.

L = Loose.

Part Number Description

Rollers

e.g. **507SS – 12H(Z14DF) / D2.8 – SS – SP 447OBL / T**

1 2 3 4 5 6 7 8 9 10

1. Tube Outside Diameter in nearest mm.
2. Bearing type, (as per Roller Bearing part number description).
3. Bearing details, (as per Roller Bearing part number description).
4. Shaft size + detail, (as per Roller Bearing part number description).
5. Extras, (as per Roller Bearing part number description).

6. Tube material + wall thickness

AL = Aluminium.
D = Dynopipe.
G = Galvanised steel.
R = Rubber coated.
P = PVC.
N = Stainless steel.

7. Shaft material

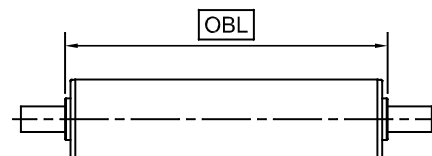
AL = Aluminium.
MS = Mild steel.
SS = Stainless steel.

8. Type of shaft

DL = Cross drilled.
F = Fixed.
FL = Flats.
FT = Female threads.
MT = Male threads.
SP = Sprung.
P = Plain.

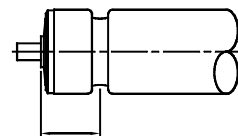
9. Length of roller

IF = Inside frame.
OBL = Over bearing length.



10. Extras

T = Taper.
GR = Grooves + spacing from over bearing, e.g.



SL = Non standard shaft length and details.

Order Details

Rollers

Tube Outside Diameter	
Ø20	
Ø25	
Ø32	
Ø35	
Ø38	
Ø42	
Ø48	
Ø50	
Ø51	
Ø60	
Ø76	
Ø89	
Ø114	
Other	

Tube Material	
PVC	
Dynopipe	
Galv. steel	
Stainless steel	

Tube Wall Thickness	
Standard	
Heavy duty	
Other	

Shaft Size	
Ø6	
Ø8	
8mm Hex	
Ø9.5	
Ø10	
10Q (Al)	
Ø11	
11mm Hex	
Ø12	
Ø12.7	
Ø14	
Ø15	
Ø16	
16mm Hex	
Ø17	
Ø19	
Ø20	
Ø25	
Other	

Shaft Material	
Mild steel	
Stainless steel	
Aluminium	
Other	

Shaft Details	
Loose	
Spring loaded	
Fixed	

Cross Drilled	
One end	
Both ends	
Hole size	
Distance from end	

Flats	
One end	
Both ends	
Length of flats	
Across flats	

Threads	
Female threads	
Male threads	
One end	
Both ends	
Thread size	
Thread depth	

Bearing Type	
Bushed	
Plastic race, carbon steel balls	
Plastic race, S/S balls	
Steel (unground)	
Steel (precision)	
Plastic housing (precision)	
Stainless steel (precision)	

Bearing Extras	
Antistatic	
Blind	
Greased	
Sealed	

Extras	
Tapers - details	
Grooves - position No. 1	
position No. 2	
Sprockets - single	
double	
fixed	
loose	
Rubber coating	
Other	

Roller Length	
Inside frame (IF)	
Over bearing length (OBL)	
Non standard shaft length	

Standard Spring Loaded shaft lengths

- Ø6mm = OBL + 25mm
- Ø8 – Ø15mm = OBL + 30mm
- Ø16mm plus = OBL + 40mm

Delivery time required	
------------------------	--

Quantity Required	
-------------------	--

Order Details

Gravity Roller Conveyor

Frame Material	
Steel (powder coated)	
Steel (zinc rich primer, powder coated)	
Steel (hot dip galvanised)	
Stainless steel	

Frame Dimensions	
Inside frame size	
Length - 2400mm	
- 1200mm	
- 600mm	

Roller pitch	
32mm	
64mm	
96mm (most popular)	
128mm	
160mm	
192mm	
224mm	

Stand Details	
Bolt on	
Free standing	
Stand material (if different to frame)	
Roller height from floor (TOR)	

Roller size and type	
----------------------	--

Shaft size and type	
---------------------	--

Extras	
Guide rails - details	
quantity	
Bends - details	
quantity	
Gates - details	
quantity	
Others - details	
quantity	

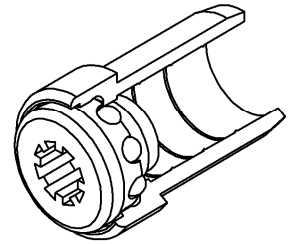
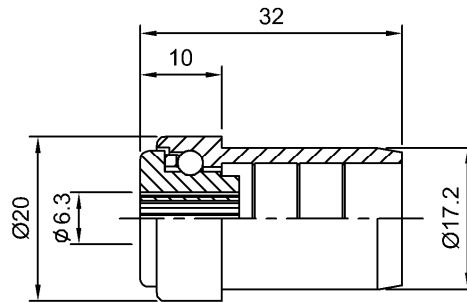
Sketch

Roller Bearings

202-6

Ball Bearing

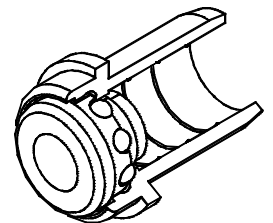
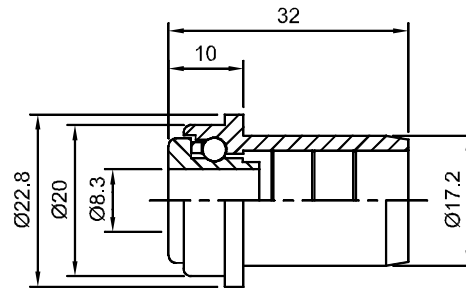
- Load capacity 5kg.
- Grey polypropylene inner and outer race.
- Stainless steel balls caged as standard.
- Suits; 20 x 1.5 tube - Aluminium
 - PVC
 - S/S
- Option; 202-8



202T-8

Ball Bearing

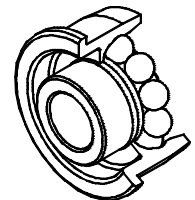
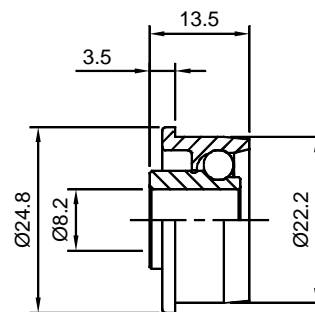
Same as 202-6 with extra flange on head to retain tapered element.



**251-8
252-8**

Ball Bearing

- Load capacity 10kg.
- Acetal inner and outer race.
- Black – carbon steel balls (251).
- Red – stainless steel balls (252).
- Suits; 25.4 x 1.6 tube - Galv. steel
 - S/S
 - Dynopipe 254
- Option; 253M-8 (25kg load cap.)

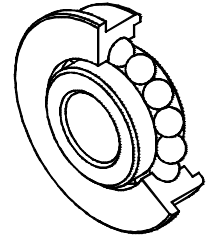
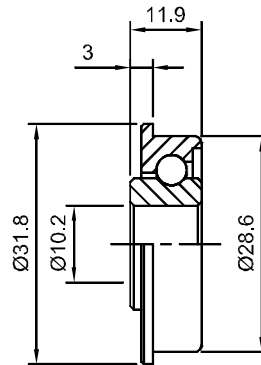


Roller Bearings

323-10

Ball Bearing

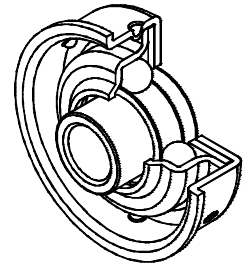
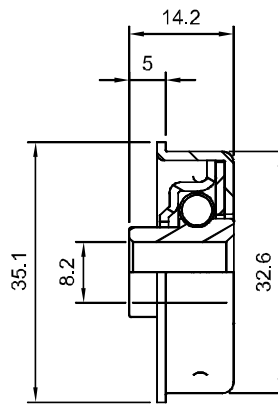
- Load capacity 20kg.
- All steel – machined races.
- Zinc plated finish.
- Suits; 31.8 x 1.6 tube - Galv. steel
- S/S
- Options; 323-9.5, 323-11



353-8

Ball Bearing

- Free running, ideal for gravity rollers.
- Load capacity 20kg.
- All steel bearing and holder.
- Zinc plated finish.
- Suits; 35 x 1.2 - Galv. steel

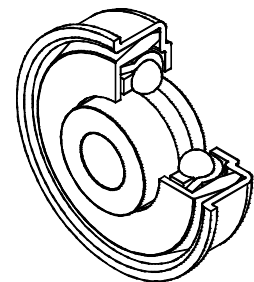
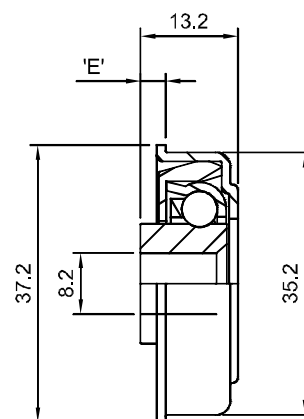


**383c- 8
383c-10**

Ball Bearing

Very quiet and free running.

- Excellent for gravity rollers.
- Load capacity 50kg.
- All steel bearing and holder.
- Plastic ball cage, for quiet running..
- Zinc plated finish.
- Suits; 38 x 1.5 tube - Galv. Steel.

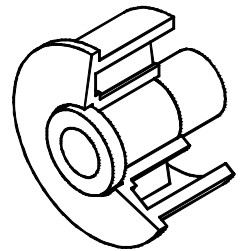
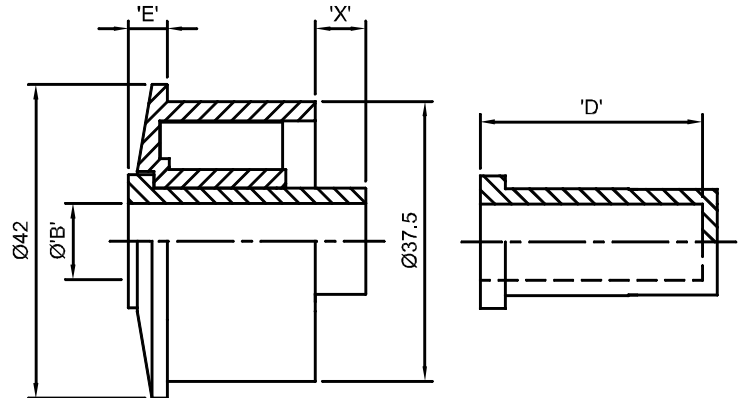


Bore Size	'E'
8	3.25
10	3

Roller Bearings

420 (P32D) Bushed Bearing

- Load capacity 15kg.
- Bearing holder white ABS.
- Suits; 42 x 2.5 tube - PVC (32 PN12)

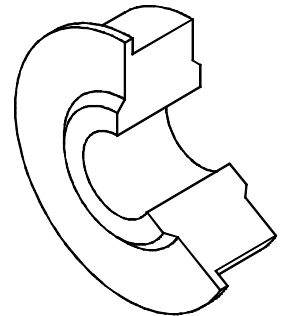
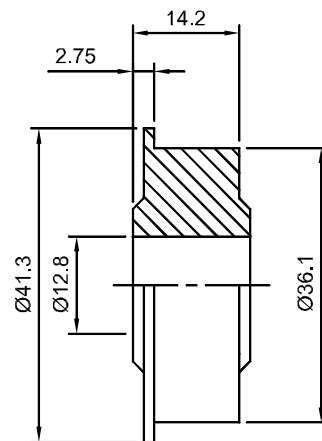


Code	Bush Material	Bore Size 'B'	Extension 'E'	Inside Extension 'X'	Useable Depth of Blind Bush 'D'
420-5	White Acetal	5.1	5.5	6.5	
420-6	White Acetal	6.5	5.5	6.5	
420-8	White Acetal	8.7	5.5	6.5	
420B-8	White Acetal	8.7	5.5	6.5	17
420-9.5	White Acetal	10	5.5	6.5	
420B-9.5	White Acetal	10	5.5	6.5	30
420-10	White Acetal	10.4	5.5	6.5	
420-11	Black Nylon	11.1	7.25		
420B-12	Black Nylon	12.5	4.5		20
420-12.7	Black Nylon	12.8	7.25		

Also available – Grey polypropylene bush for high acid environments

420HD-12 Bushed Bearing

- Load capacity 25kg.
- Black nylon.
- Suits; 42.4 x 3.2 tube - S/S (32 NB sch. 40)
- Option; 420HD-16

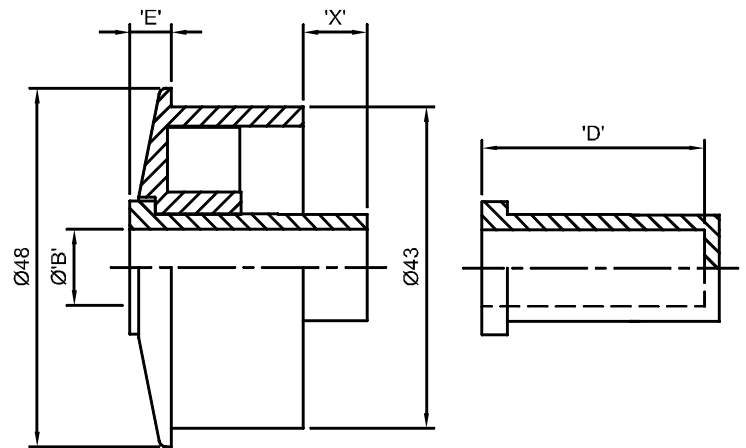


Roller Bearings

480 (P40D)

Bushed Bearing

- Load capacity 15kg.
- Bearing holder white ABS.
- Suits; 48.3 x 2.8 tube - PVC (40 PN12)
 - Dynopipe 483
 - Galv. steel (40 NB light)
 - S/S (40 NB sch. 10)



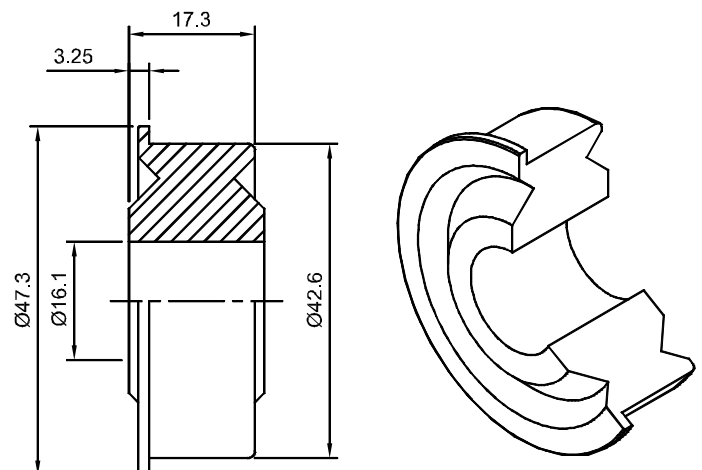
Code	Bush Material	Bore Size 'B'	Extension 'E'	Inside Extension 'X'	Useable Depth of Blind Bush 'D'
480-5	White Acetal	5.1	5.25	9	
480-6	White Acetal	6.5	5.25	9	
480-8	White Acetal	8.7	5.25	9	
480B-8	White Acetal	8.7	5.25	9	17
480-9.5	White Acetal	10	5.25	9	
480B-9.5	White Acetal	10	5.25	9	30
480-10	White Acetal	10.4	5.25	9	
480-11	Black Nylon	11.1	7	0	
480B-12	Black Nylon	12.5	4	1.5	20
480-12.7	Black Nylon	12.8	7	0	

- Also available – Grey polypropylene Bush for high acid environments

480HD-16

Bushed Bearing

- Load capacity 30kg.
- Black nylon.
- Suits; 48.3 x 2.8 tube - PVC (40 PN12)
 - Dynopipe 483
 - Galv. steel (40 NB light)
 - S/S (40 NB sch. 40)
- Option; 480HD-19



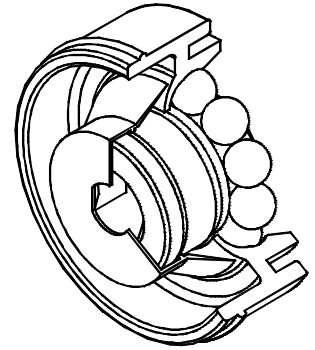
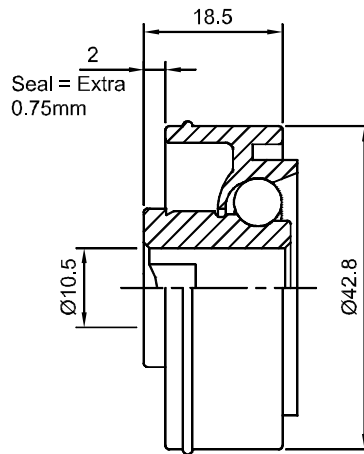
Roller Bearings

481-10/Q 482-10/Q

Ball Bearing

Our most popular bearing.
Can be used for gravity or powered roller.

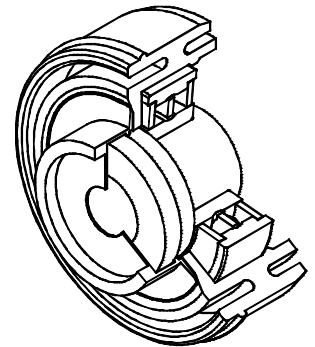
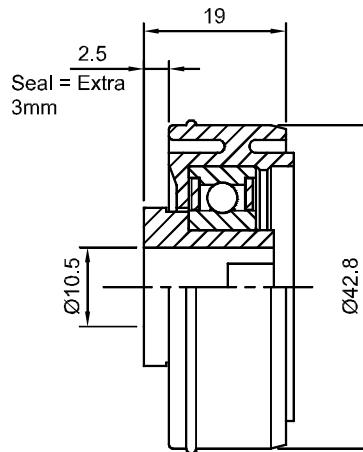
- Load capacity 25kg.
- Acetal inner and outer race.
- Black – carbon steel balls (481).
- White – stainless steel balls (482).
- Suits; 48.3 x 2.8 tube - Dynopipe 483
- Options - Sealed (481SE) or (482SE)
 - Greased (482G)
 - 10.6 Q shaft
 - 11 or 12mm round.



487-10/Q

Precision Bearing

- Load capacity 100kg.
- White acetal bearing housing and bush.
- 6202 2RS precision bearing.
- Suits; 48.3 x 2.8 tube - Dynopipe 483
- Options - Extra seal (481SE)
 - S/S Bearing (487SS)
 - 10.6 Q shaft
 - 8, 11 or 12mm round.

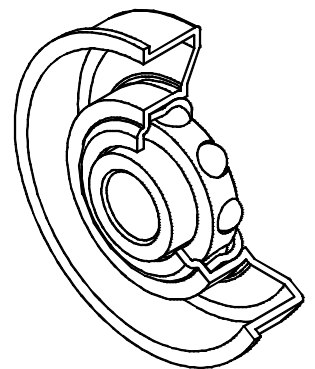
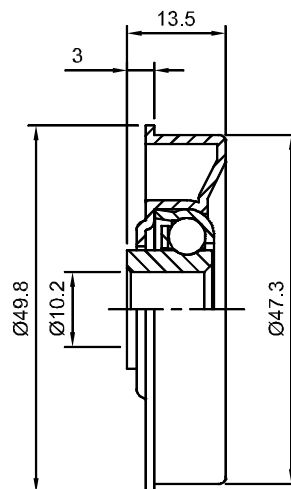


503C-10 503C-11H

Ball Bearing

Very quiet and free running.

1. Excellent for gravity rollers.
- Load capacity 60kg.
 - All steel bearing and holder.
 - Plastic ball cage, for quiet running.
 - Zinc plated finish.
 - Suits; 50 x 1.5 tube - Galv. steel
 - 50.8 x 1.85 - Galv. steel
 - Options; 503C-8, 503-12

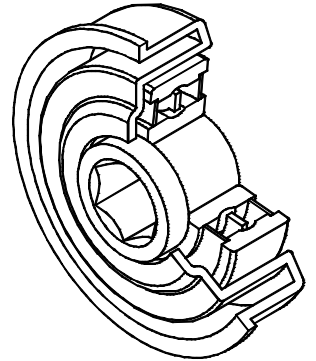
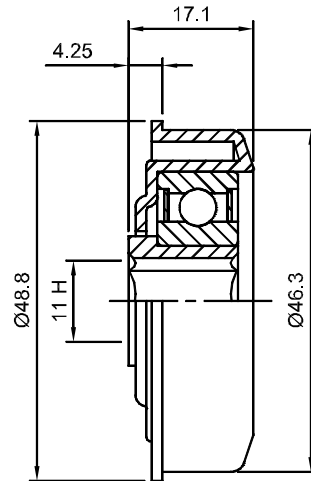


Roller Bearings

505-11H Precision Bearing

Medium duty precision bearing for use when plastic housing is not desirable.

- Load capacity 100kg.
- Steel bearing housing and bush (z/plated).
- 6202Z Bearing.
- Suits; 50 x 1.5 tube - Galv. steel
50.8 x 1.85 - Galv. steel
- Options; 505-8, 505-10, 505-12

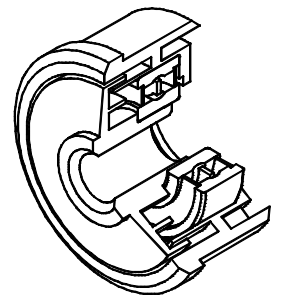
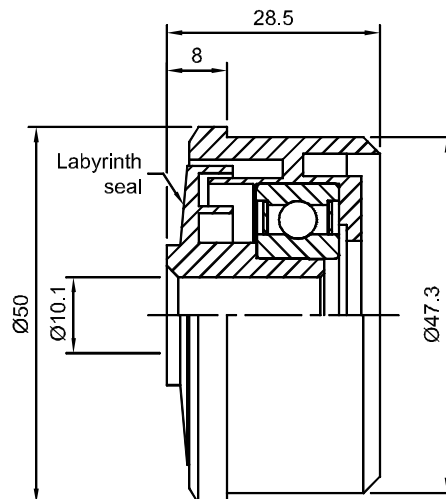


507-8 507-Q 507-10 507-11H 507-12 507-14 Precision Bearing

Most popular precision bearing.
Matches with nylon sprockets.

- Load capacity 100kg.
- 6202 Bearing.
- Black polypropylene housing (Antistatic).
- Black polypropylene labyrinth (Antistatic except 8mm).
- Suits; 50 x 1.5 tube - Galv steel
50.8 x 1.85 - Galv steel
50 x 1.5 - S/S
50.8 x 2 - S/S
50 x 1.6 - Aluminium

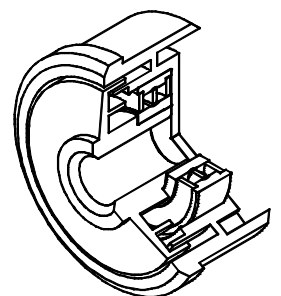
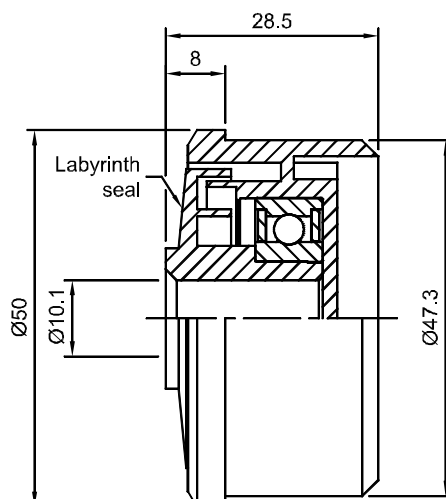
Option; 507SS



507B Precision Bearing

Blind bearing housing to seal tube.

- Same details as 507.
- Not antistatic.



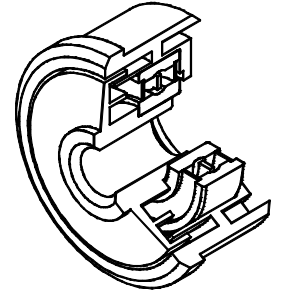
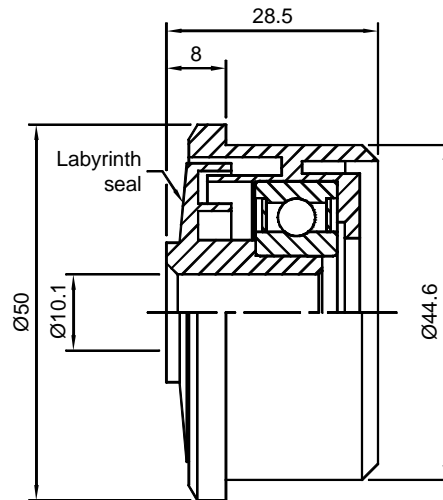
Roller Bearings

507-8
507-Q
507P-10
507P-11H
507P-12
507P-14

Precision Bearing

Most popular precision bearing.
Matches with nylon sprockets.

- Load capacity 100kg.
 - 6202 Bearing.
 - Grey polypropylene housing.
 - Black polypropylene labyrinth.
 - Suits; 50 x 2.8 tube - Dynopipe
- Option; 507PSS

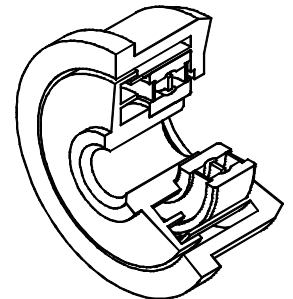
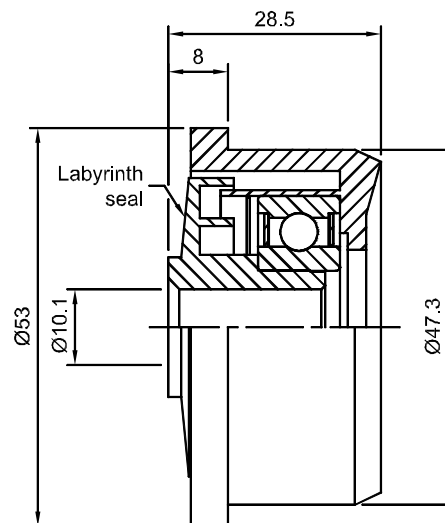


507T

Precision Bearing

Extra large head to retain tapered elements.

- Same details as 507.
- Not antistatic.

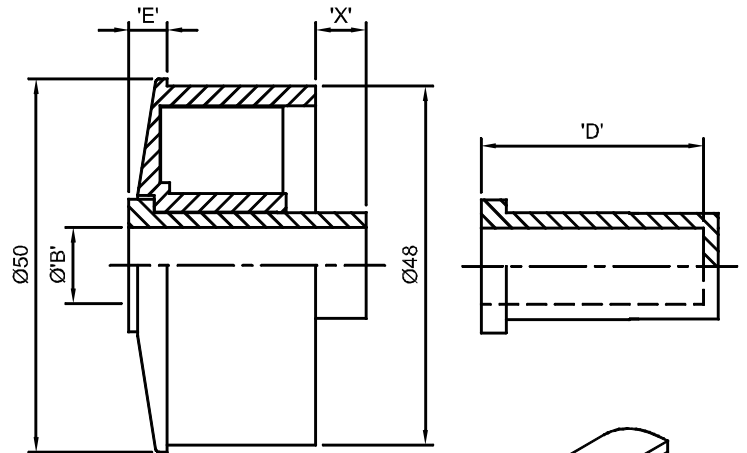


Roller Bearings

510 (S2)

Bushed Bearing

- Load capacity 15kg.
- Bearing holder white ABS.
- Suits; 50.8 x 1.6 tube - Galv. steel
- S/S



Code	Bush Material	Bore Size 'B'	Extension 'E'	Inside Extension 'X'	Useable Depth of Blind Bush 'D'
510-5	White Acetal	5.1	5.5	6.5	
510-6	White Acetal	6.5	5.5	6.5	
510-8	White Acetal	8.7	5.5	6.5	
510B-8	White Acetal	8.7	5.5	6.5	17
510-9.5	White Acetal	10	5.5	6.5	
510B-9.5	White Acetal	10	5.5	6.5	30
510-10	White Acetal	10.5	5.5	6.5	
510-11	Black Nylon	11.5	7.25	0	
510B-12	Black Nylon	12.4	4.5	0	20
510-12.7	Black Nylon	12.8	7.25	0	

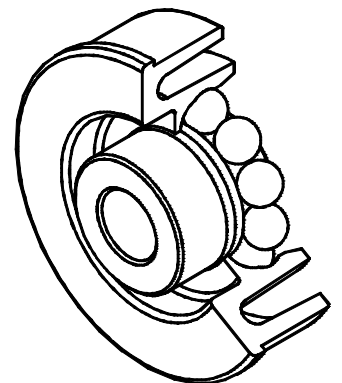
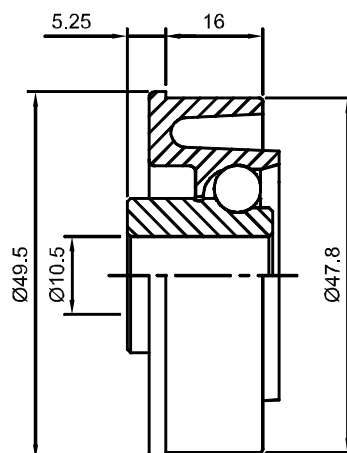
- Also available – Grey polypropylene bush for high acid environments.

**512-10
512-11H**

Ball Bearing

Light duty, free running ball bearing.

- Load capacity 25kg.
- Acetal inner and outer race.
- Red – stainless steel balls (512).
- Black – stainless steel balls antistatic (512A).
- Suits; 50.8 x 1.6 tube - Galv. steel
- S/S
50.8 x 1.43 - Aluminium
- Option - Greased (G)
- 11 or 12mm round.
- Ali D.

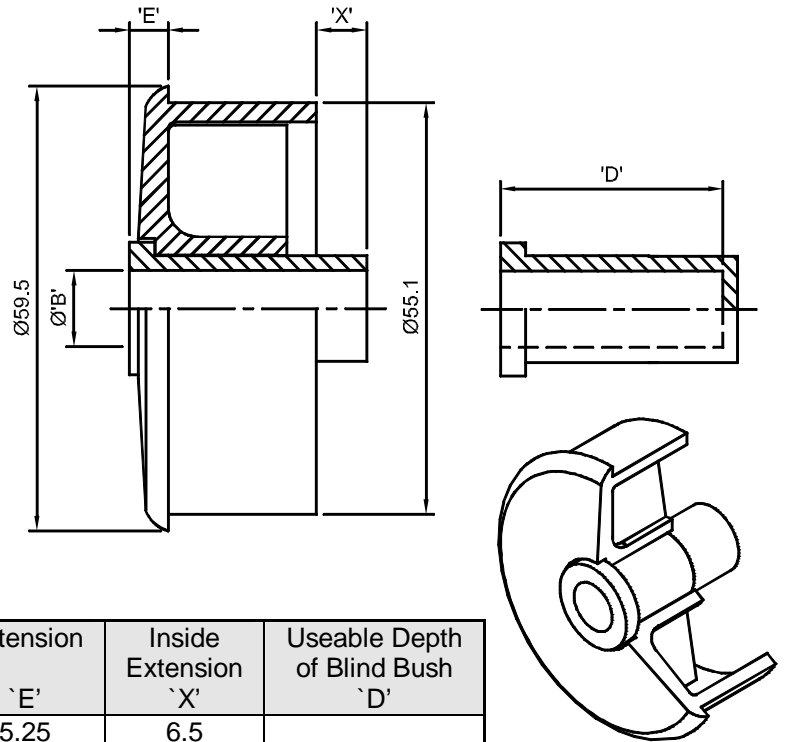


Roller Bearings

600 (50C)

Bushed Bearing

- Load capacity 15kg.
- Bearing holder white ABS.
- Suits; 60 x 2.8 tube - PVC (50 PN9)



Code	Bush Material	Bore Size 'B'	Extension 'E'	Inside Extension 'X'	Useable Depth of Blind Bush 'D'
600-5	White Acetal	5.1	5.25	6.5	
600-6	White Acetal	6.5	5.25	6.5	
600-8	White Acetal	8.7	5.25	6.5	
600B-8	White Acetal	8.7	5.25	6.5	17
600-9.5	White Acetal	10	5.25	6.5	
600B-9.5	White Acetal	10	5.25	6.5	30
600-10	White Acetal	10.5	5.25	6.5	
600-11	Black Nylon	11.5	7	0	
600B-12	Black Nylon	12.4	4.5	0	20
600-12.7	Black Nylon	12.8	7	0	

- Also available – Grey polypropylene bush for high acid environments

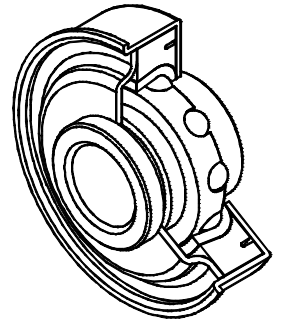
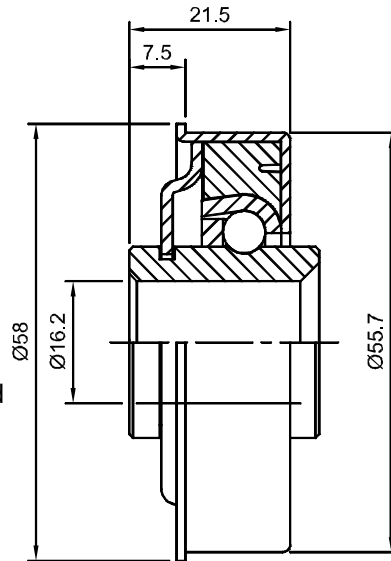
Roller Bearings

604-11H

Ball Bearing

Suitable for medium duty, gravity rollers where free running is required for easy physical movement.

- Load capacity 150kg.
- Hardened steel ball bearing (nylon cage).
- Nylon impact absorbing inner housing and a flanged steel cup.
- Nylon inner housing forms shield when swaged into tube.
- Suits; 60.3 x 2.3 tube - Galv steel

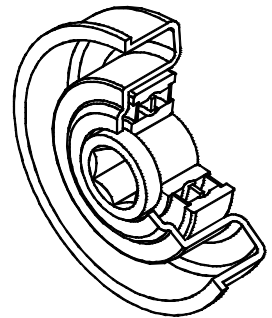
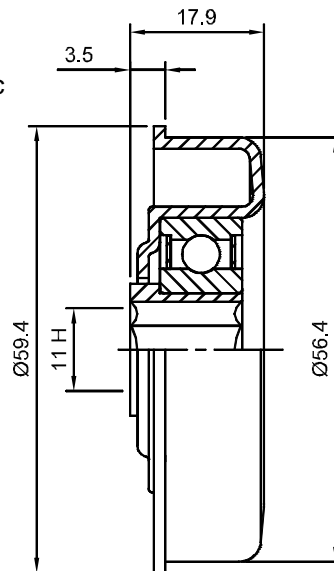


605-11H

Precision Bearing

Medium duty precision bearing for use where plastic housing is not desirable eg. extreme temp.

- Load capacity 100kg.
- Steel bearing housing and bush (z/plated).
- 6202Z bearing.
- Suits; 60.3 x 2.3 tube - Galv steel
- Options; 605-8, 605-10, 605-12

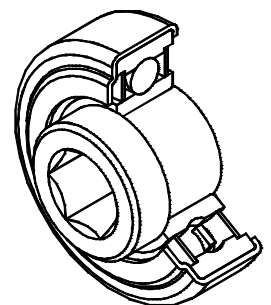
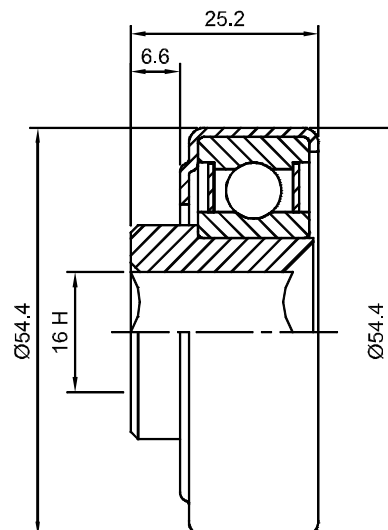


605HD-16H

Precision Bearing

Heavy duty.

- Load capacity 1100kg.
- Steel bearing housing and bush.
- 6205-2RS Bearing.
- Suits; 60.3 x 3.6 tube - Galv steel (50 NB Med.)
- S/S (50 NB sch. 40)
- Options; 605HD-16, 605HD-19, 605HD-20

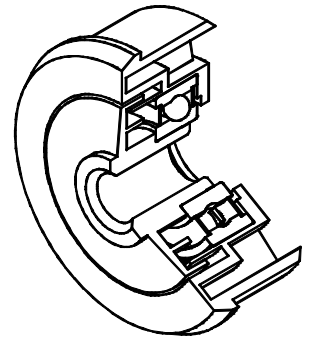
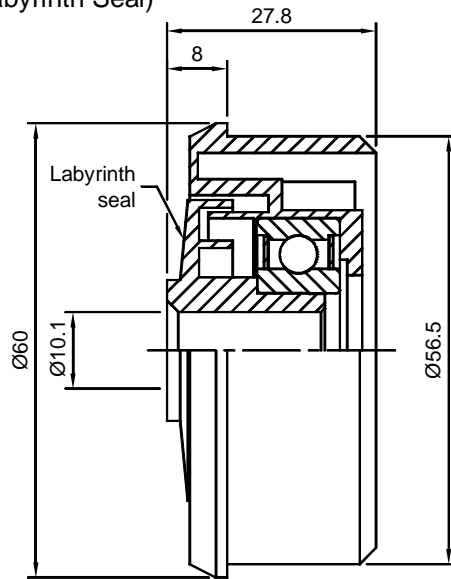


Roller Bearings

607-8
607-10
607-11H
607-12
607-14

Precision Bearing (Labyrinth Seal)

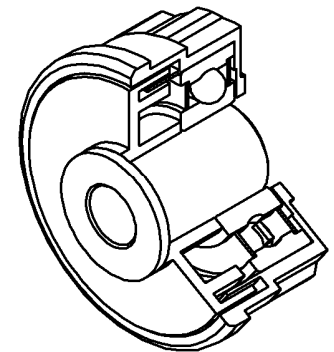
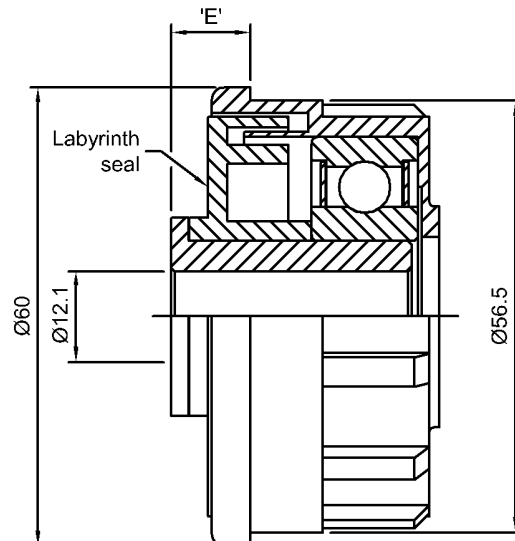
- Load capacity 100kg.
- 6202 Bearing.
- Black polypropylene housing (Antistatic).
- Black polypropylene labyrinth, (Antistatic except 8mm).
- Suits; 60.3 x 2.3 tube - Galv steel
- S/S (sch. 10)
- Option; 607SS



607HD-12
607HD-16
607HD-20

Precision Bearing (Labyrinth Seal)

- Load capacity 180kg.
- 6204 Bearings.
- Black nylon housing.
- Black polypropylene labyrinth and reducer bush.
- Suits; 60.3 x 2.3 tube - Galv steel
- S/S (sch. 10)
- Option; 607HDSS



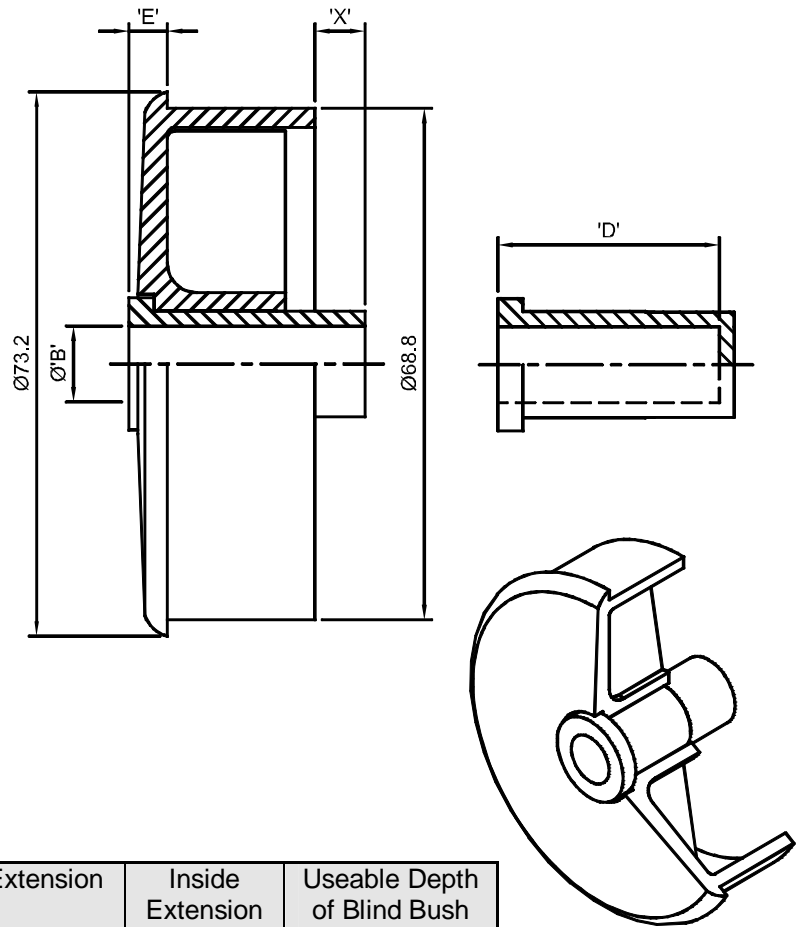
Bore Size	'E'
12	10
16	10
20	7.75

Roller Bearings

750 (P65C)

Bushed Bearing

- Load capacity 20kg.
- Bearing holder white ABS.
- Suits; 75 x 3 tube - PVC (65 PN9)



Code	Bush Material	Bore Size 'B'	Extension 'E'	Inside Extension 'X'	Useable Depth of Blind Bush 'D'
750-5	White Acetal	5.1	5.5	6	
750-6	White Acetal	6.5	5.5	6	
750-8	White Acetal	8.7	5.5	6	
750B-8	White Acetal	8.7	5.5	6	17
750-9.5	White Acetal	10	5.5	6	
750B-9.5	White Acetal	10	5.5	6	30
750-10	White Acetal	10.5	5.5	6	
750-11	Black Nylon	11.5	7.5	0	
750B-12	Black Nylon	12.4	5	0	20
750-12.7	Black Nylon	12.8	7.5	0	

- Also available – Grey polypropylene bush for high acid environments

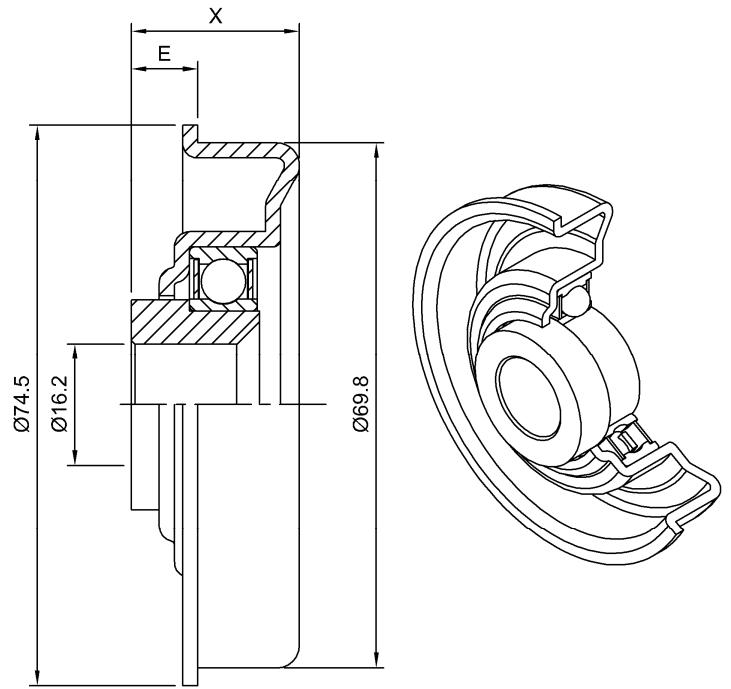
Roller Bearings

755-16
755-19

Ball Bearing

- Load capacity 200kg.
- Steel bearing, housing and bush (z/plated).
- 6905Z bearing.
- Suits; 76 x 3.2 tube - Galv steel (65 NB light)

Bore Size	'E'	'X'
16	10	30
19	7	27

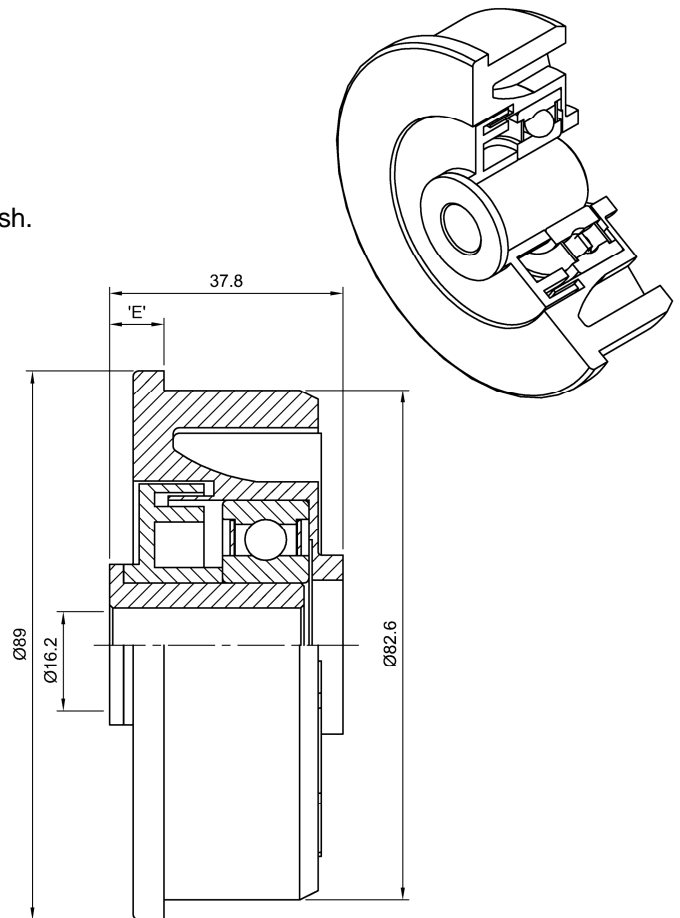


897-12
897-16
897-20

Precision Bearing (Labyrinth Seal)

- Load capacity 180kg.
- 6204 Bearings.
- Black polycarbonate housing.
- Black polypropylene labyrinth and reducer bush.
- Suits; 89 x 3.2 tube - Galv steel (80 NB light)
 - S/S (schedule 10)
 - Aluminium
- Option; 897SS

Bore Size	'E'
12	10
16	10
20	7.75

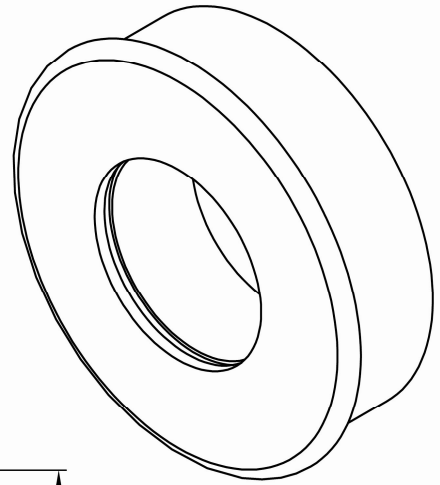
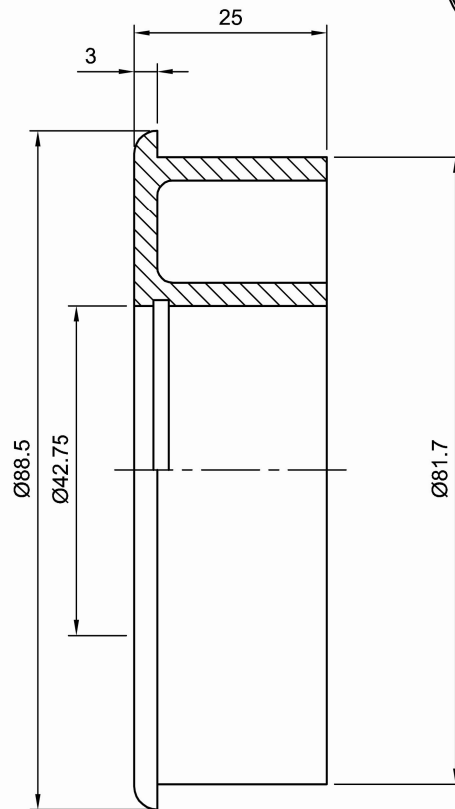


Roller Bearings

890

Bushed Bearing

- ABS reducer bush.
- Suits; 89 x 3.5 tube – PVC (80PN9)
- Fits range of reducer bearings;
 - 480 Bushed
 - 480HD Bushed
 - 481/2 Ball Bearings
 - 487 Precision Bearings

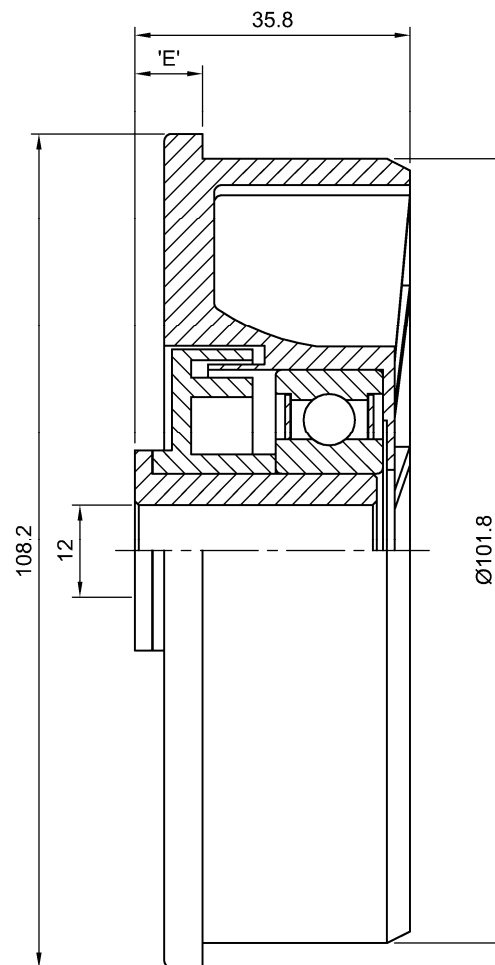
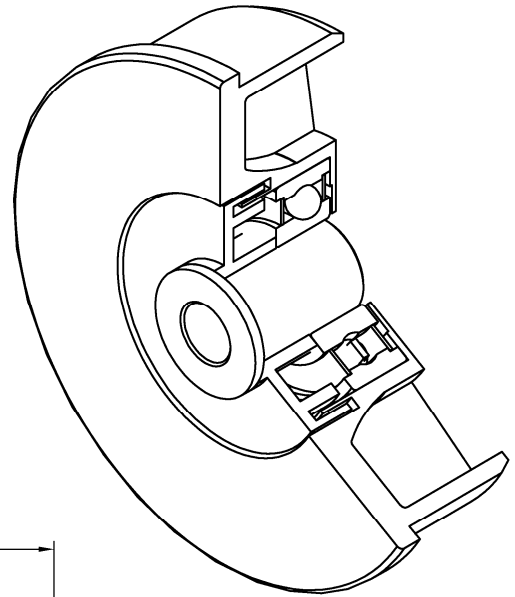


Roller Bearings

1147-12
1147-16
1147-20

Precision Bearing (Labyrinth Seal)

- Load capacity 180kg.
- 6204 Bearings.
- Black polycarbonate housing.
- Black polypropylene labyrinth and reducer bush.
- Suits; 114 x 6 tube - PVC (100 PN12)
 - Steel (100 NB sch.40)
 - S/S (100 NB sch.40)
- Option; 1147SS



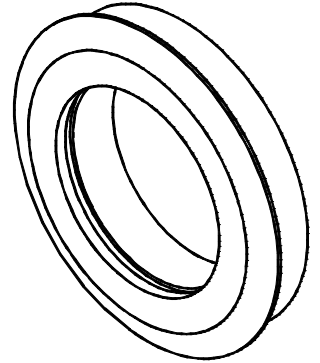
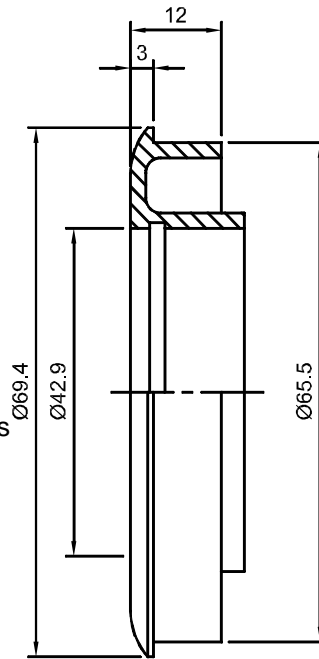
Bore Size	'E'
12	9.5
16	9.5
20	7.25

Roller Bearings

TR4

Reducer Bush

- Reducer bush for large end of Dynopipe taper.
- Can also be used as bearing holder for 75 x 5 PVC (65 PN15).
- White ABS.
- Fits range of reducer bearings;
 - 480 Bushed
 - 480HD Bushed
 - 481/2 Ball Bearings
 - 487 Precision Bearings

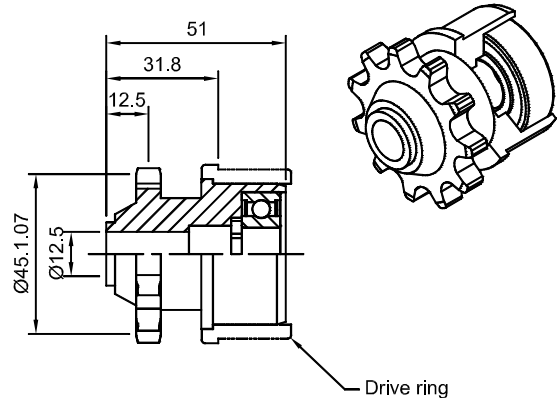


Sprockets

Z11S

Sprocket

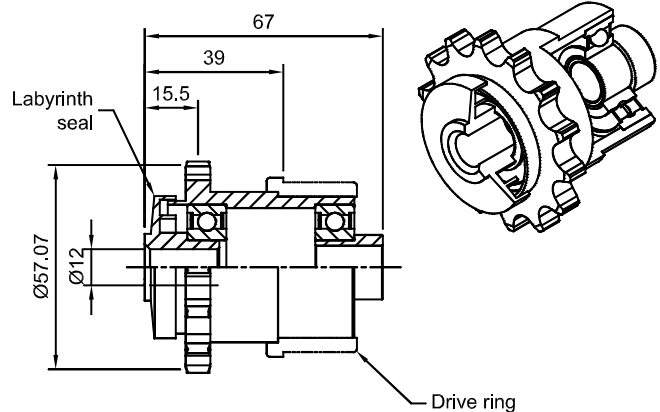
- Black nylon body.
- 6202 precision bearing (Inner).
- Black nylon bush bearing (Outer).
- 11 tooth.
- ½" pitch.
- Fixed drive (Z11SF).
- Loose (Z11SL).
- Fits range of tube sizes with adaptors (see drive ring details).
- Standard 12mm bore (other sizes special order).
- Options; Stainless steel precision bearing
Blind bush on outer



Z14S

Single row

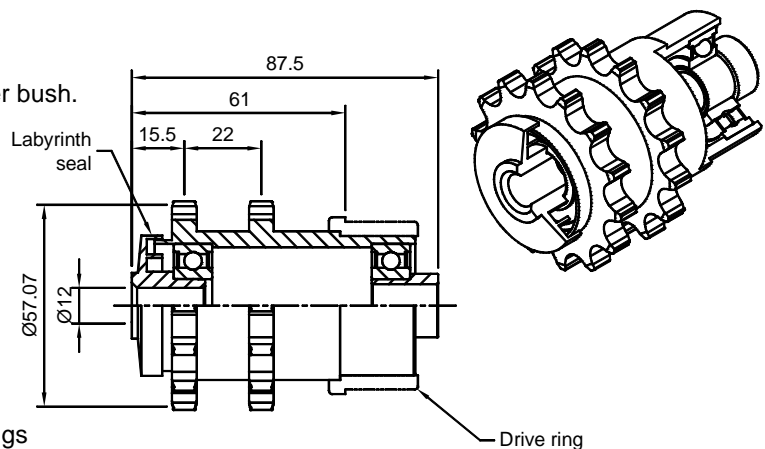
- Black nylon body.
- Black polypropylene labyrinth & reducer bush.
- 14 tooth.
- ½" pitch.
- Fixed drive (Z14SF).
- Loose (Z14SL).
- Fits range of tube sizes with adaptors.
- Standard 12mm bore.
- Can be fitted with any 507 series labyrinth for other shaft sizes.
- Option; Stainless steel precision bearings



Z14D

Double row

- Black nylon or zinc plated steel body.
- Black polypropylene labyrinth & reducer bush.
- 14 tooth.
- ½" pitch.
- Fixed drive (Z14SF).
- Loose (Z14SL).
- Fits range of tube sizes with adaptors.
- Standard 12mm bore.
- Can be fitted with any 507 series labyrinth for other shaft sizes.
- Option; Stainless steel precision bearings

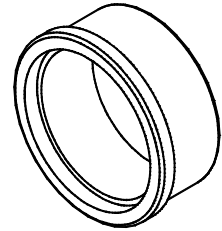
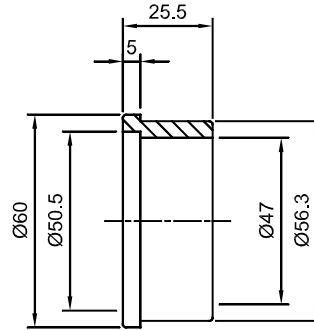


Sprockets

AD60

Adaptor

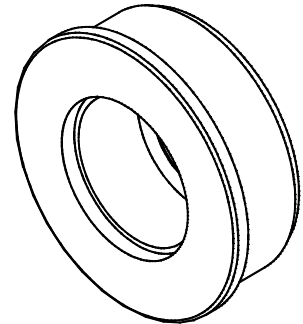
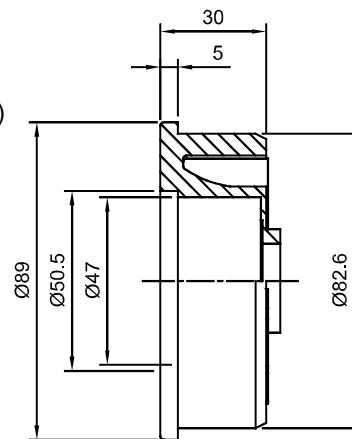
- Black nylon.
- Suits; 60 x 2.3 tube - Galv. steel
- S/S (sch. 10)



AD89

Adaptor

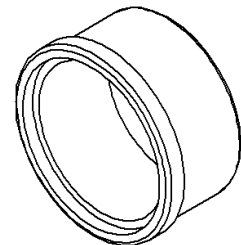
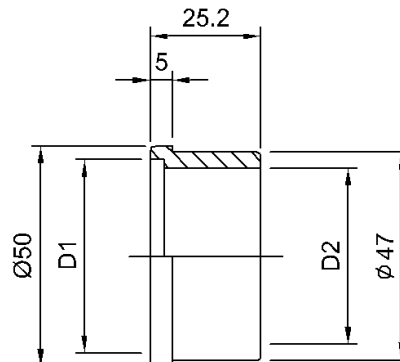
- Black polycarbonate.
- Suits; 89 x 3.2 tube - Galv. steel (80 NB light)
- S/S (80 NB sch. 10)
- Aluminium



DR-F/L

Drive Ring Details

- Fixed (F) black nylon.
- Loose (L) black acetal.
- Suits; 50 x 1.6 tube - Galv. steel
- Aluminium
50.8 x 1.85 - Galv. steel
50.8 x 2 - S/S
60mm adaptors
89mm adaptors



	D1	D2
Tight	42.60	39.30
Loose	44.60	40.60

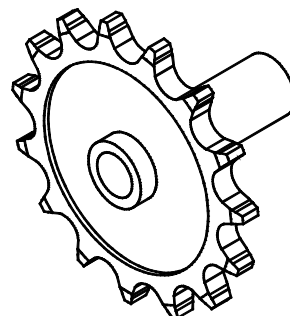
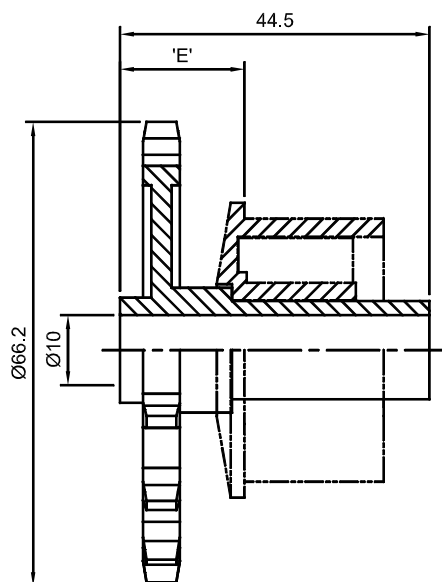
Sprockets

SP6 SP10

Lightweight Roller Drive

- White Acetal.
- Effective bush bearing.
- ½" pitch (takes B.S. chain).
- 15 tooth.
- Fits range of end caps.
- Bore size - SP6 (6.5mm)
- SP10 (10mm)

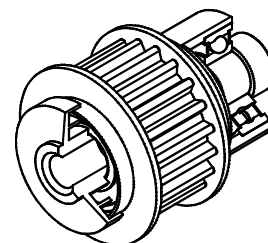
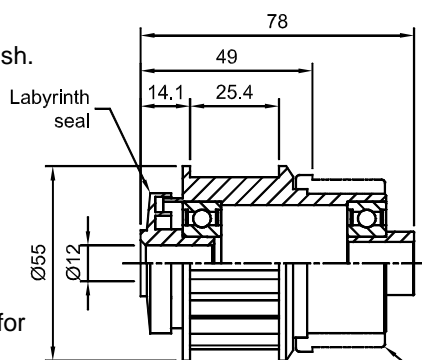
End Cap Type	'E'
420	18
480	17.75
510	18
600	17.75
750	18



TB20

Tooth Belt Pulley

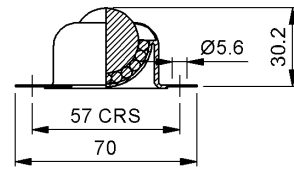
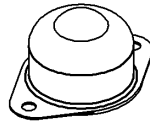
- Black nylon body.
- Black polypropylene labyrinth & reducer bush.
- 20 tooth.
- 8mm pitch.
- Fixed drive (TB20F).
- Loose (TB20L).
- Fits range of tube sizes with adaptor.
- Standard 12mm bore.
- Can be fitted with any 507 series labyrinth for other shaft sizes.
- Option; Stainless steel precision bearing.



Ball Transfers

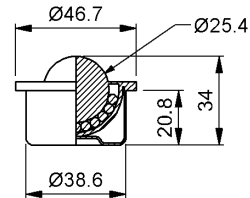
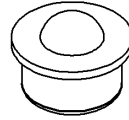
BT 253 - B

- Load capacity 50kg.
- Zinc plated pressing.
- Hardened balls.



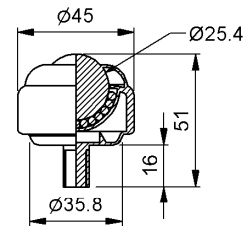
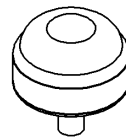
BT 253 - P

- Load capacity 50kg.
- Zinc plated pressing.
- Hardened balls.



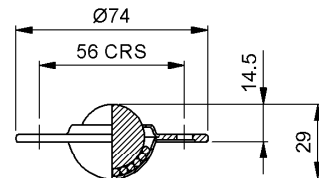
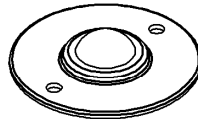
BT 253 - MT

- Load capacity 50kg.
- Zinc plated pressing.
- Hardened balls.



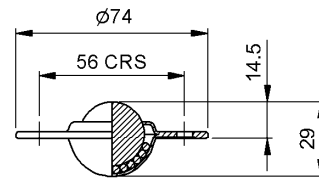
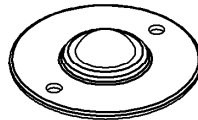
BT 253SS - F

- Load capacity 60kg.
- Stainless steel pressing & balls.



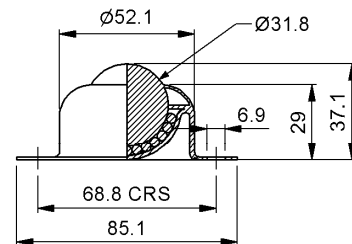
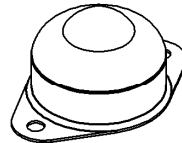
BT 253 - F

- Load capacity 60kg.
- Zinc plated pressing.
- Hardened balls.



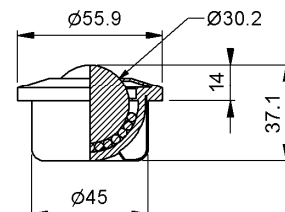
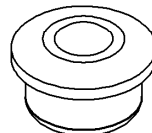
BT 323 - B

- Load capacity 100kg.
- Zinc plated pressing.
- Hardened balls.



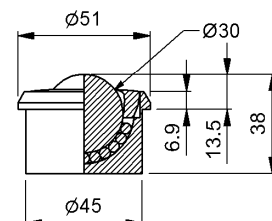
BT 303 - P

- Load capacity 150kg.
- Zinc plated pressing.
- Hardened balls.



BT 304 - P

- Load capacity 180kg.
- Zinc plated housing.
- Stainless steel balls.

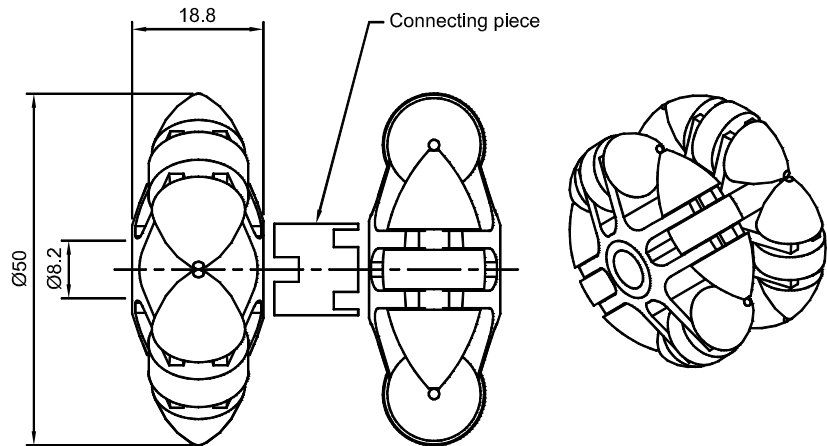


Rollers

MTR 50

Multi Directional Roller

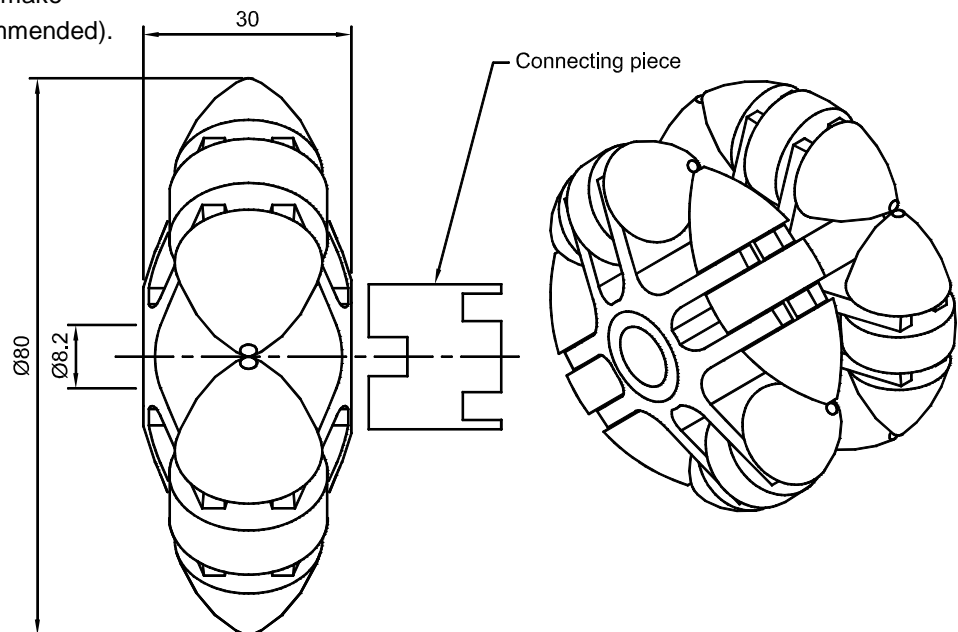
- Load capacity 5kg each.
- Black acetal core.
- Grey acetal rollers.
- S/S axles.
- Connecting piece to make double rollers (recommended).



MTR 80

Multi Directional Roller

- Load capacity 20kg each.
- Black acetal core.
- Grey acetal rollers.
- S/S axles.
- Connecting piece to make double rollers (recommended).

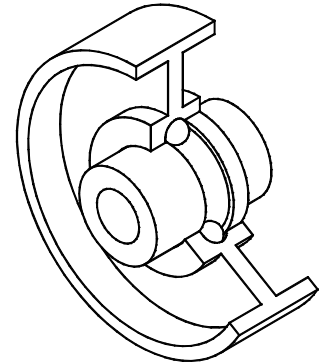
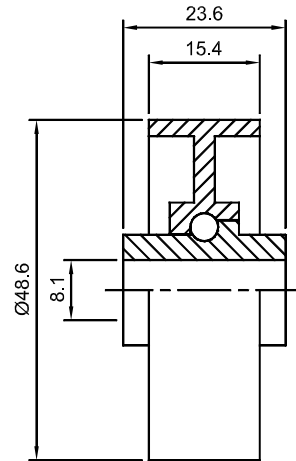


Rollers

SKW 482-8/24

Scate Wheel

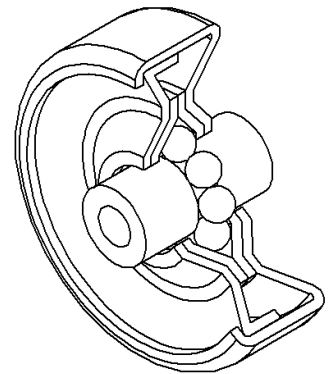
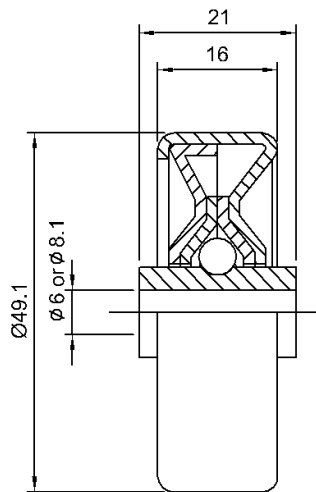
- Load capacity 20kg.
- White acetal inner & outer race.
- Nylon cage.
- S/S balls.



SKW 483-6/24 SKW 483-8/24

Scate Wheel

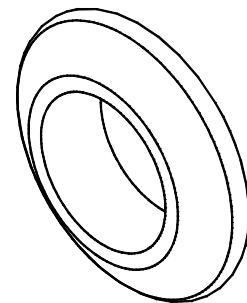
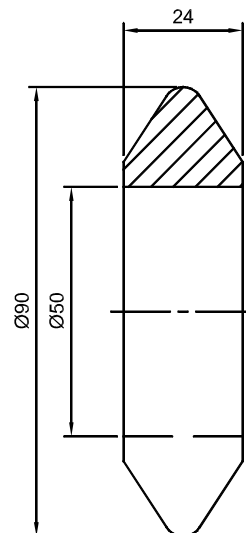
- Load capacity 30kg.
- All steel.
- Zinc plated finish.



SUW 5090/24

Support Wheel

- Polyurethane.
- Natural colour.
- Fits over $\varnothing 50$ mm Galv. roller.
- Used to support, protect & guide load.

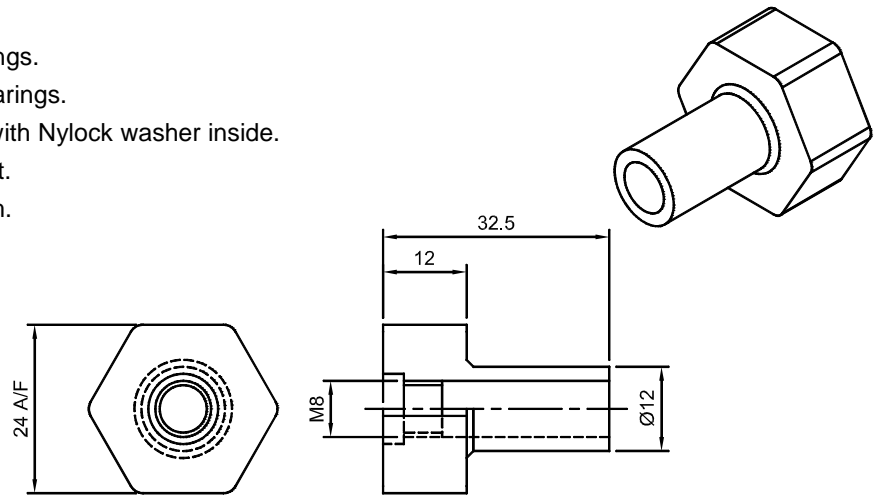


Blind Pin

BP 12

Blind Pin

- Acetal for bushed bearings.
- Nylon for 507 series bearings.
- Stainless steel M8 nut with Nylock washer inside.
- Requires M8 x 30 lg bolt.
- Roller OBL = IF – 25mm.

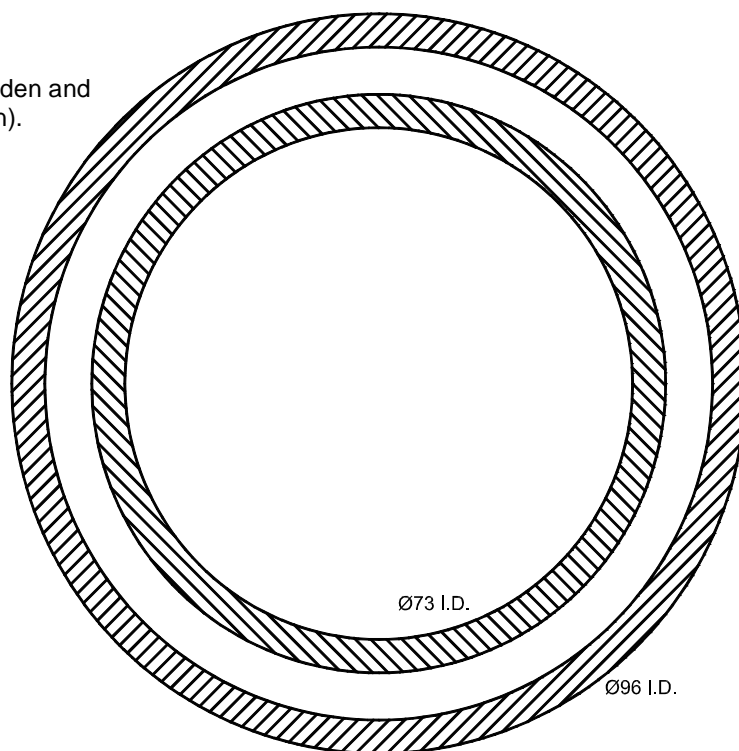


Drive Bands

DB

Drive Band

- Standard $\varnothing 4.75$.
- Clear urethane.
- Temp. range; -20°C to $+60^{\circ}\text{C}$ (may harden and set at low temp. if not continuously run).
- Recommended initial %10 stretch.



DB 96

Drive Band

- $\varnothing 96$ I.D.
 - 318 overall length.
 - Used for main drive – lineshaft to roller center distance = 110 to 120mm.
- Also available in different hardness's and strengths

DB 90

Drive Band

- $\varnothing 90$ I.D.
- 295 overall length.
- Used for roller to roller link at 96mm pitch. (50mm Roller)

DB 73

Drive Band

- $\varnothing 73$ I.D.
- 245 overall length.
- Used for roller to roller link at 64mm pitch. (50mm Roller)

Drive Bands

DB S

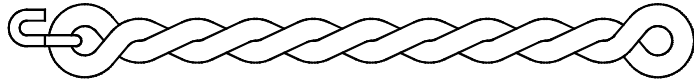
Drive Band

- Available made up to special length.
 - Minimum Ø43 I.D.
-

DB E

Emergency Drive Band

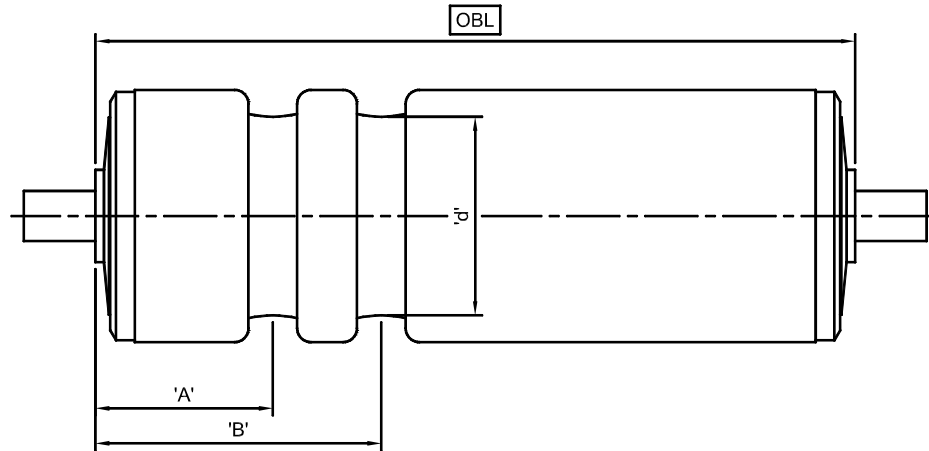
- Lineshaft to roller drive.
- Suits 110 to 120mm centers.
- Black polyurethane.
- Stainless steel conector.
- U.V. resistant.
- 275 overall length.



Grooves In Tube

Grooves In Tube

Tube Diameter – 40, 50, 51, & 60mm

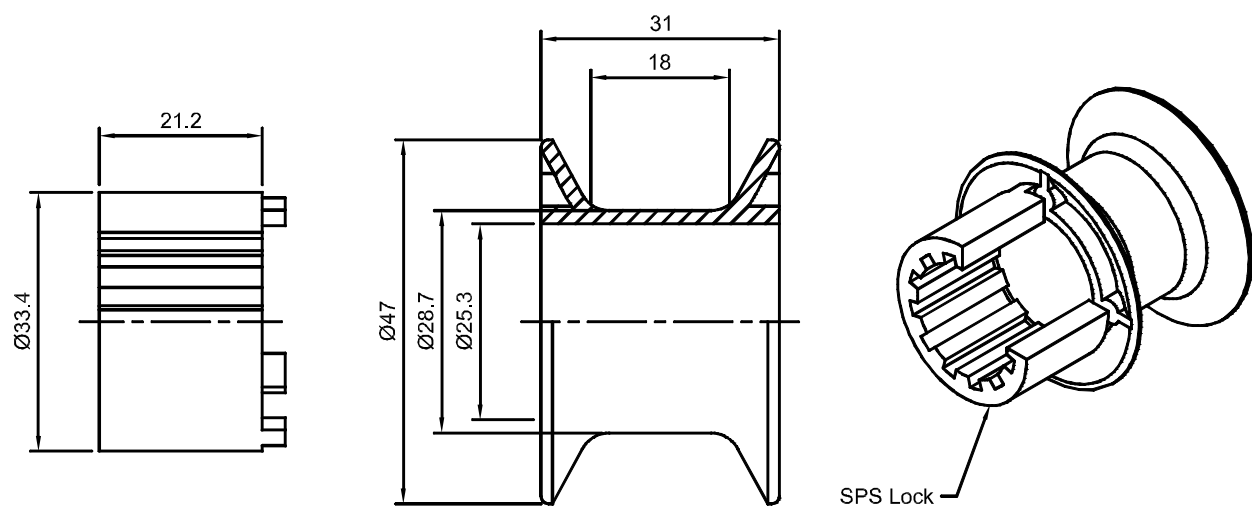


Roller Type	Tube Material	A (min.)	A - B (min.)	d (min.)
481 / 482	DNP	30	23	38
487	DNP	30	23	38
504	Galv. steel	25	22	40
505	Galv. steel	25	22	40
507	Galv. Steel, S/S or Plastic	36	22	40
512A	Galv. steel or S/S	30	24	41
518A	Galv. steel or S/S	30	24	41
605	Galv. steel	30	25	50
607	Galv. steel	38	25	50

Spools

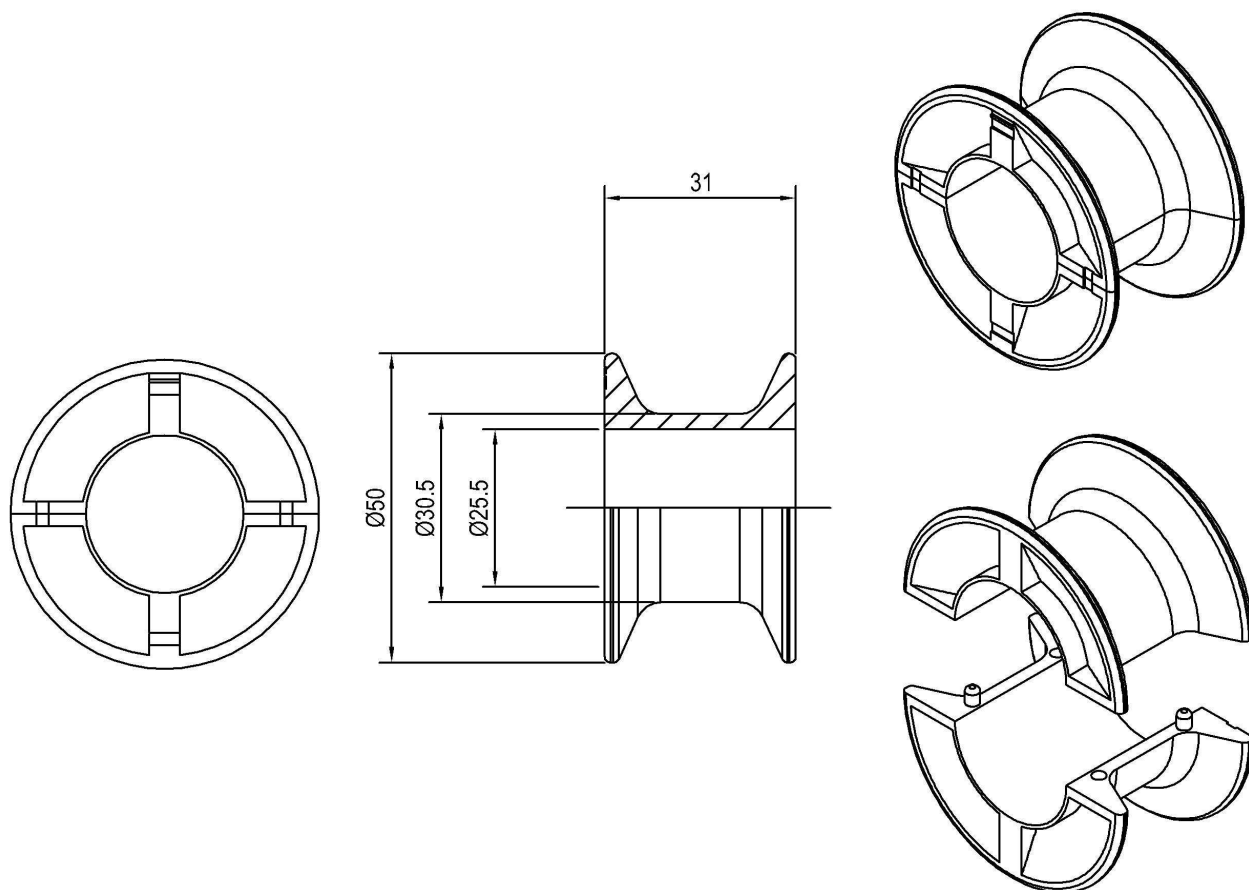
SP1

Spool



SPS

Split Spool



Roller Coating

Rubber Coating

- Black or Grey.
- Not bonded to tube.
- Suits plastic and steel.

Tube Ø	O.D. of rubber
48	50.5
50	52.3
51	53
60	62

Plastic Coating

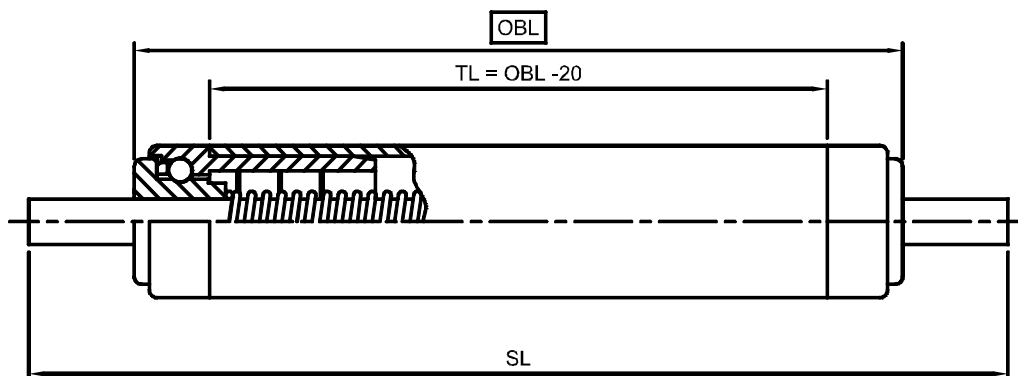
- Black Polyethylene.
- Bonded to tube.
- Temp.range; -40°C to +120°C.

Tube Ø	O.D. of plastic
48	53.5
50	55
51	56
60	64.5
76	82
89	94
114	118

Conveyor Rollers

202

Tube Diameter – 20mm



Tube	Bearings	Shaft
<u>Materials:</u>		<u>Materials:</u>
20 x 1.6 - Aluminium	Thermoplastic race	Standard – S/S
20 x 1.5 - Plastic	S/S balls	Option – Mild steel
20 x 1.5 – S/S		<u>Size:</u>
		Standard – Ø6mm
		Option – Ø8mm
		<u>Type:</u>
		Standard – SP
		Options – DL, F, L, MT

- Load Rating kg (Minimum applies).

Roller Length	Tube Material			Shaft	
(mm)	Plastic	Aluminium	S/S	Ø6mm	Ø8mm
100	9	9	9	9	9
200	5	9	9	9	9
300	2	9	9	9	9
400	1	9	9	2	9
500		8	9	1	9
600		5	9		9
700		3	9		9
800		2	6		
900		1	4		
1000	Shaded	1	3		
1100	sizes not	1	2		
1200	recommended		1		

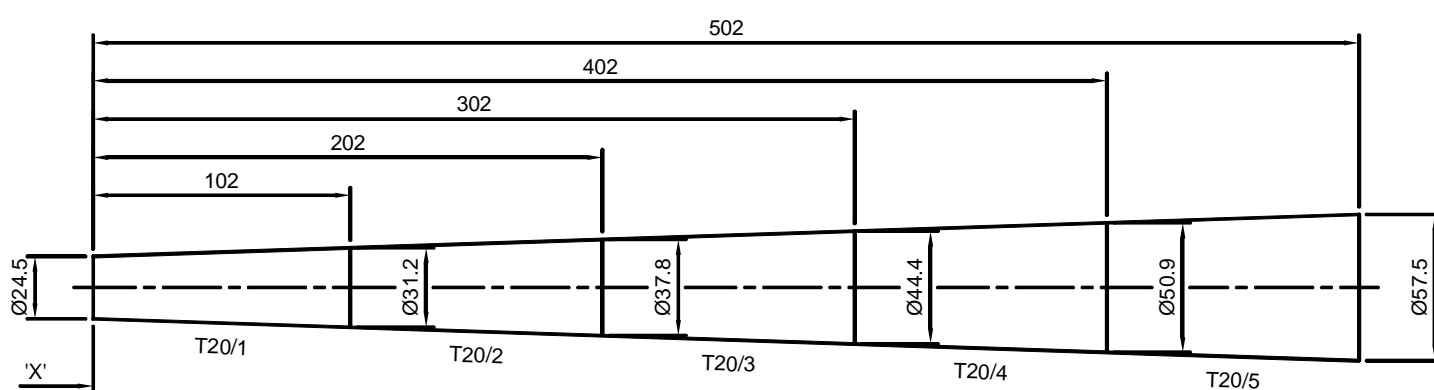
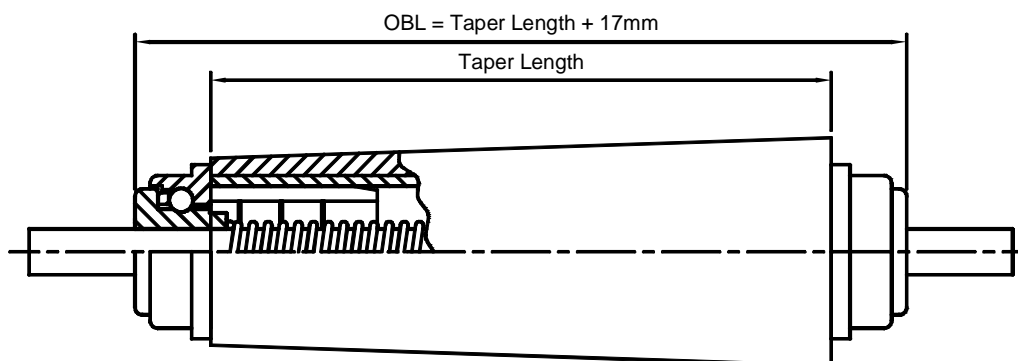
- Max. speed 9m/min.
- Max. static load 4.5kg.
- For central point load, reduce load rating by 1/3.

Common uses: Small packages
Bagged products – meat etc.

Conveyor Rollers

202T

Tube Diameter – 20mm



'X' = Inner Radius 373mm

Tapered Elements For Ø20 Tube

<u>Tube</u>	<u>Sleeve</u>	<u>Bearings</u>	<u>Shaft</u>
<u>Materials:</u>	<u>Materials:</u>		<u>Materials:</u>
20 x 1.6 - Aluminium	Black polypropylene	Thermoplastic race	Standard – S/S
20 x 1.5 - Plastic		S/S balls	Option – Mild steel
20 x 1.5 – S/S			<u>Size:</u>
			Ø8mm
			<u>Type:</u>
			Standard – SP
			Options – DL, F, L, MT

- Load Rating kg (Minimum applies).

Roller Length (mm)	Tube Material			Shaft Ø8mm
	Plastic	Aluminium	S/S	
119	9	9	9	9
219	5	9	9	9
319	2	9	9	9
419	1	9	9	2
519		8	9	1

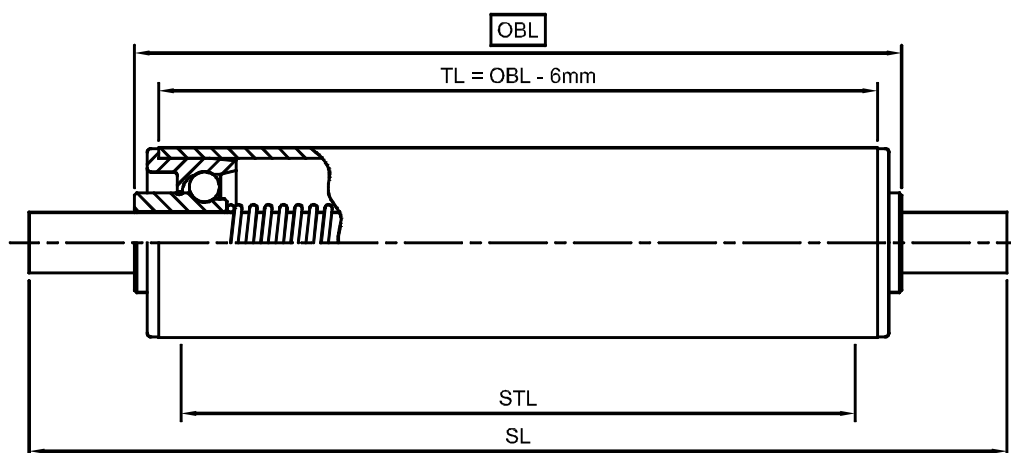
- Max. speed 9m/min.
- Max. static load 4.5kg.
- For central point load, reduce load rating by 1/3.

Common uses: Small packages around corners.
Matches well with roller type 251 / 252.

Conveyor Rollers

251
252

Tube Diameter – 25, & 25.4mm



Straight Tube Length (STL) - S/S = OBL - 13mm
- Galv. steel = OBL - 12mm

Tube	Bearings	Shaft
<u>Materials:</u>		<u>Materials:</u>
25.4 x 1.5 Galv. steel	Acetal race	Mild steel
25.4 x 1.5 S/S	Carbon steel balls (251) - Black	Stainless steel
25.4 x 1.5 Dynopipe 254 (white)	S/S balls (252) - Red	<u>Size:</u>
		Ø8mm
		<u>Type:</u>
		Standard – SP
		Options – DL, F, L, MT

- Load Rating kg (Minimum applies).

Roller Length	Tube Material		Shaft
(mm)	PVC	Steel	Ø8mm
100	15	15	15
200	8	15	15
300	4	15	15
400	1	15	15
500		15	15
600		12	15
700		10	15
800		8	
900		6	
1000	Shaded	4	
1100	sizes not	3	
1200	recommended	2	

- Max. speed 15m/min.
- Max. static load 8kg.
- For central point load, reduce load rating by 1/3.

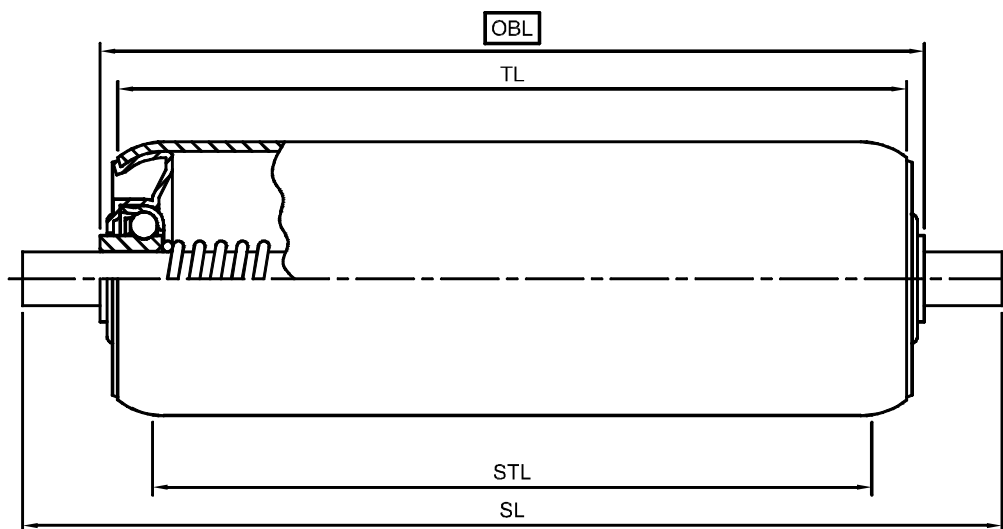
Common uses: Small boxes

Belt supports on light duty low profile belt conveyor.

Conveyor Rollers

383C

Tube Diameter – 38mm



Tube	Bearings	Shaft
<u>Materials:</u>		<u>Materials:</u>
38 x 1.5 Galv. steel	Steel ball bearing	Standard - Mild steel
	Caged balls	Option - Stainless steel
	Zinc plated	<u>Size:</u>
		Standard – 8mm
		Option - 10mm
		<u>Type:</u>
		Standard – SP
		Options – DL, F, FT, L

- Load Rating kg (Minimum applies).

Roller Length (mm)	Tube Material Steel	Shaft			
		Non Fixed		Fixed	
		Ø8mm	Ø10mm	Ø8mm	Ø10mm
100	100	100	100	100	100
200	100	80	100	80	100
300	100	40	90	80	100
400	100	30	80	80	100
500	80	20	70	80	100
600	60	15	60	80	100
700	40	10	50	80	100
800	30	5	40	70	100
900	25		30	60	100
1000	18		20	50	100
1100	16		10	40	80
1200	10		5	30	50

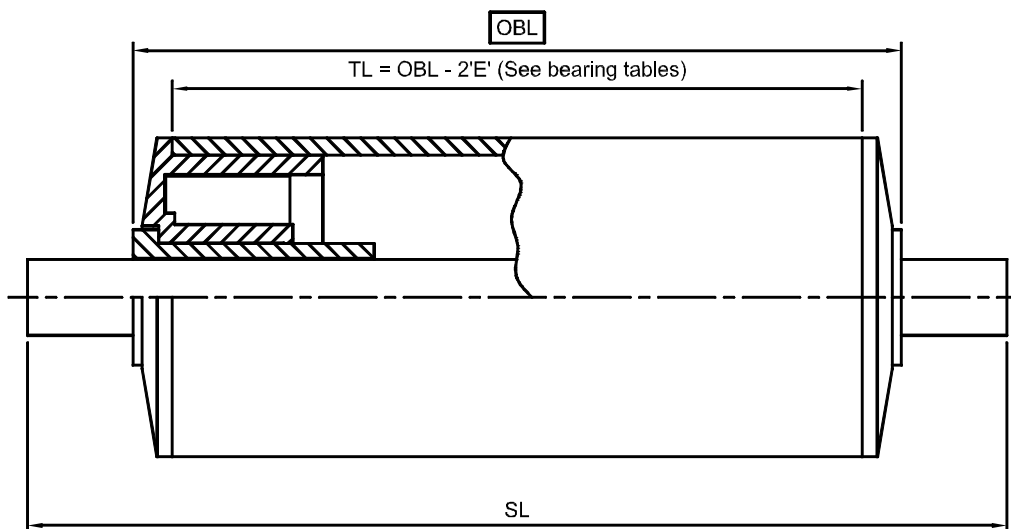
- Max. speed 30m/min.
- Max. static load 80kg.
- For central point load, reduce load rating by 1/3.

Common uses: Very quiet & free running gravity rollers.

Conveyor Rollers

420

Tube Diameter – 42mm



Tube	Bearings	Shaft
<u>Materials:</u>		<u>Materials:</u>
42 x 2.5 PVC (32 PN12)	Bushed type	Mild steel
	White ABS housing	Stainless steel
	White acetal bush up to 10mm	<u>Size:</u>
	Black nylon bush over 10mm	Standard – Ø8, Ø9.5mm
	Blind bushes – see bearing tables	Option – Ø6, Ø10, Ø11, Ø12mm
		<u>Type:</u>
		Standard – SP
		Options – DL, F, FT, L, MT

- Load Rating kg (Minimum applies).

Roller Length	Tube Material	Shaft			
(mm)	PVC	Ø6mm	Ø8mm	Ø10mm	Ø12mm
100	30	30	30	30	30
200	30	20	30	30	30
300	20	10	30	30	30
400	12	2	25	30	30
500	6	1	20	30	30
600	3		15	30	30
700			10	30	30
800				25	30
900				20	30
1000		Shaded		10	30
1100		sizes not			30
1200		recommended			30

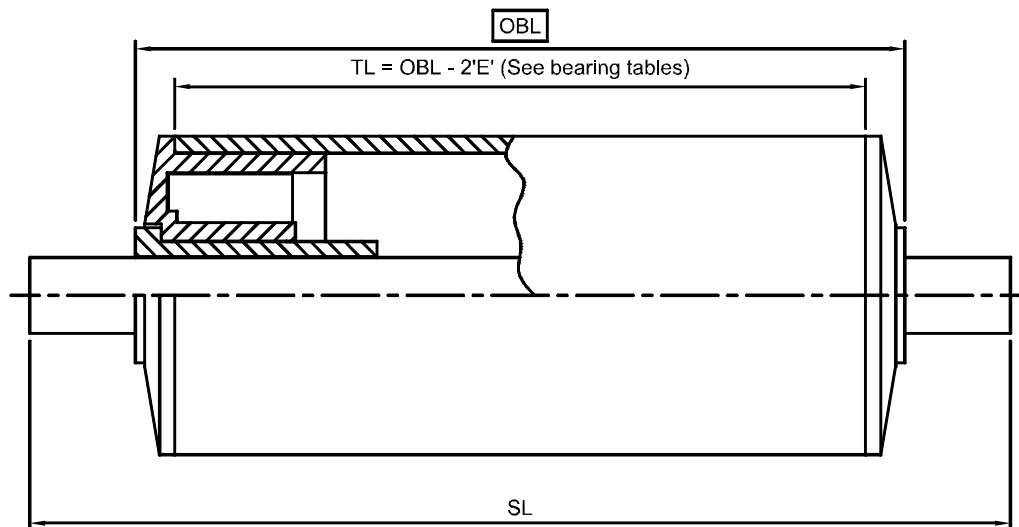
- Rated speed 20m/min (speed can be increased with decreased load).
- Max. static load 30kg.
- For central point load, reduce load rating by 1/3.

Common uses: Fruit handling elevators.

Conveyor Rollers

480

Tube Diameter – 48.3mm



Tube	Bearings	Shaft
<u>Materials:</u>		<u>Materials:</u>
Standard;	Bushed type	Mild steel
48.3 x 2.8 White Dynopipe 483	White ABS housing	Stainless steel
<u>Option;</u>	White acetal bush up to 10mm	<u>Size:</u>
48.3 x 2.8 PVC (40 PN12)	Black nylon bush over 10mm	Standard – Ø8, Ø9.5mm
	Blind bushes – see bearing tables	Option – Ø6, Ø10, Ø11, Ø12mm
		<u>Type:</u>
		Standard – SP
		Options – DL, F, FT, L, MT

- Load Rating kg (Minimum applies).

Roller Length	Tube Material	Shaft			
(mm)	PVC	Ø6mm	Ø8mm	Ø10mm	Ø12mm
100	30	30	30	30	30
200	30	20	30	30	30
300	30	10	30	30	30
400	28	2	25	30	30
500	16	1	20	30	30
600	12		15	30	30
700	5		10	30	30
800	3			25	30
900	2			20	30
1000	1	Shaded		10	30
1100		sizes not			30
1200		recommended			30

- Rated speed 20m/min (speed can be increased with decreased load).
- Max. static load 30kg.
- For central point load, reduce load rating by 1/3.

Common uses: General purpose gravity rollers.

Belt supports.

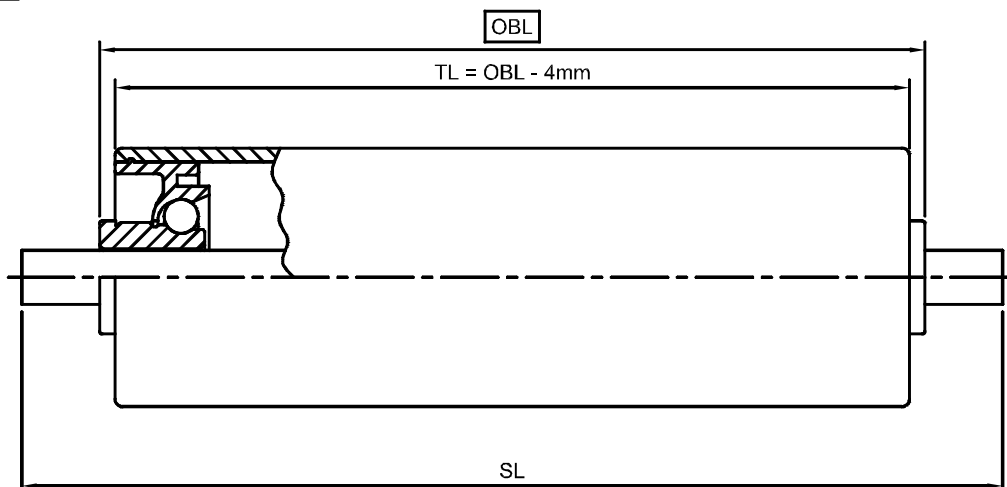
Food factories.

Fruit handling elevators.

Conveyor Rollers

481
482

Tube Diameter – 48mm



Tube	Bearings	Shaft
<u>Materials:</u>		<u>Materials:</u>
48.3 x 2.8 Dynopipe 483	(481) Black acetal race	Aluminium 10 x 8 Q
	Carbon steel balls	Mild steel Ø10mm
	(482) White acetal race	S/S Ø10mm
	S/S balls	<u>Special options:</u>
	<u>Options:</u>	Ø11mm M/S or S/S
	Greased (G) recommend for powered	Ø12mm M/S or S/S
	Sealed (SE) (TL = OBL – 5.5)	<u>Type:</u>
		Standard – SP
		Options – Aluminium Q - DL, F, L
		– M/S or S/S –DL, F, FL, FT, L, MT

- Load Rating kg (Minimum applies).

Roller Length (mm)	Tube Material Dynopipe	Shaft		
		Aluminium Q	Ø10mm	Ø12mm
100	30	30	30	30
200	30	30	30	30
300	30	25	30	30
400	28	20	30	30
500	16	16	30	30
600	12	10	30	30
700	5		30	30
800	3		25	30
900	2		20	30
1000	1	Shaded	10	30
1100		Sizes not		30
1200		recommended		30

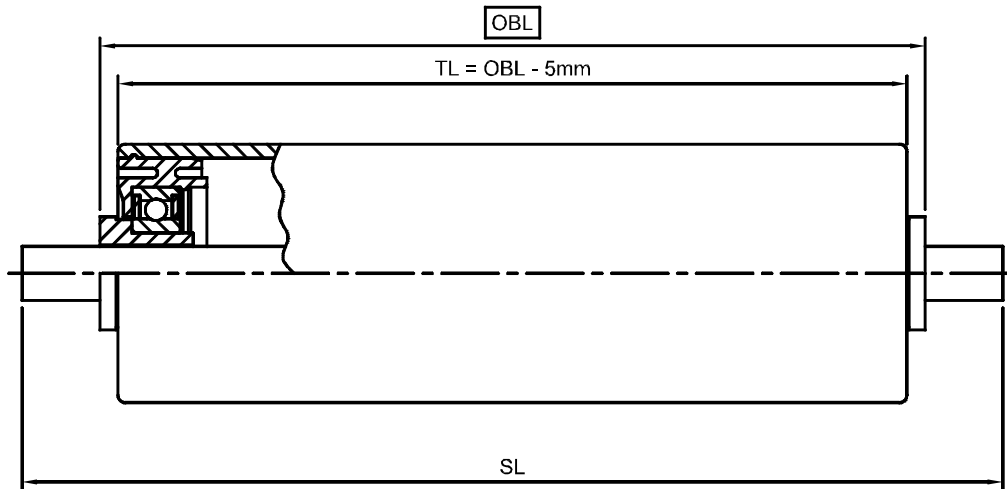
- Max. speed 20m/min.
- Max. static load 18kg.

Common uses: Gravity rollers.
Light belt supports.
Line shaft driven roller.
General and food grade requirements.

Conveyor Rollers

487

Tube Diameter – 48.3mm



Tube	Bearings	Shaft
<u>Materials:</u>		<u>Materials:</u>
48.3 x 2.8 Dynopipe 483	Precision bearing	Aluminium 10 x 8 Q
	White acetal housing	Mild steel Ø10mm
	<u>Options:</u>	S/S Ø10mm
	Stainless steel (SS)	<u>Special options:</u>
	Extra seal (SE) (TL = OBL – 11)	Ø11mm M/S or S/S
		Ø12mm M/S or S/S
		<u>Type:</u>
		Standard – SP
		Options – Aluminium Q - DL, F, L
		– M/S or S/S –DL, F, FL, FT, L, MT

- Load Rating kg (Minimum applies).

Roller Length (mm)	Tube Material Dynopipe	Shaft		
		Aluminium Q	Ø10mm	Ø12mm
100	40	30	40	40
200	30	30	40	40
300	30	25	40	40
400	28	20	40	40
500	16	16	40	40
600	12	10	40	40
700	5		30	40
800	3		25	40
900	2		20	40
1000	1	Shaded	10	40
1100		Sizes not		40
1200		recommended		40

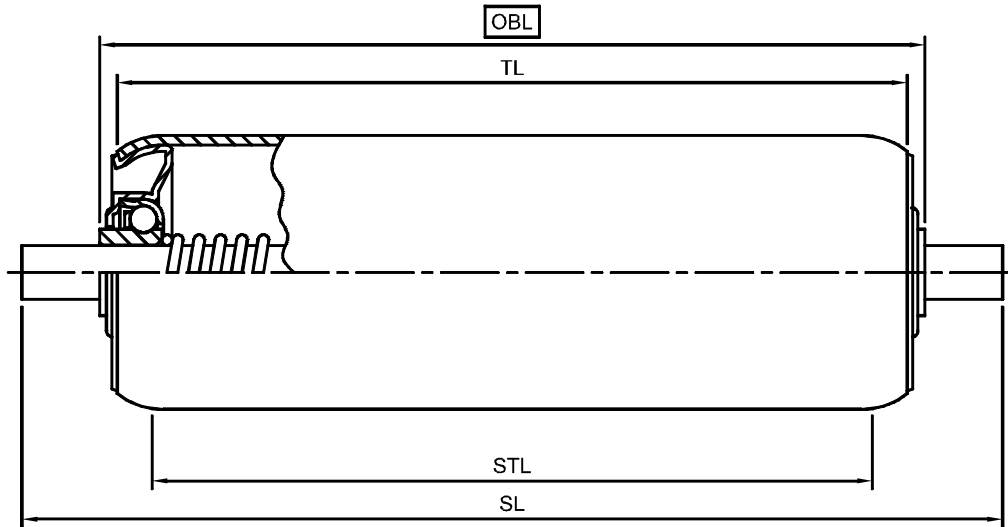
- Max. speed 60m/min.
- Max. static load 40kg.

Common uses: High speed gravity rollers.
High speed powered rollers.
Clean areas.

Conveyor Rollers

503C

Tube Diameter – 50, & 50.8mm



STL = OBL - 11 (Ø8 & Ø10)
 = OBL - 13 (11H)
 TL = OBL - 5 (Ø8 & Ø10)
 = OBL - 7.5 (11H)

Tube	Bearings	Shaft
<u>Materials:</u>		<u>Materials:</u>
50 x 1.5 Galv. steel	Steel ball bearing	Standard - Mild steel
	Caged balls	Option - Stainless steel
	Zinc plated	<u>Size:</u>
		Standard – Ø10mm, 11Hex
		Option – Ø8mm, Ø11mm, Ø12mm
		<u>Type:</u>
		Standard – SP
		Options – DL, F, FT, L

- Load Rating kg (Minimum applies).

Roller Length (mm)	Tube Material Steel	Shaft					
		Non Fixed			Fixed		
		Ø8mm	Ø10mm	11H	Ø8mm	Ø10mm	11H
100	100	100	100	100	100	100	100
200	100	80	100	100	80	100	100
300	100	40	90	90	80	100	100
400	100	30	80	70	80	100	100
500	100	20	70	65	80	100	100
600	100	15	60	60	80	100	100
700	75	10	50	55	80	100	100
800	60	5	40	50	70	100	100
900	40		30	45	60	100	100
1000	30		20	40	50	100	100
1100	20		10	35	40	80	100
1200	10		5	30	30	50	100

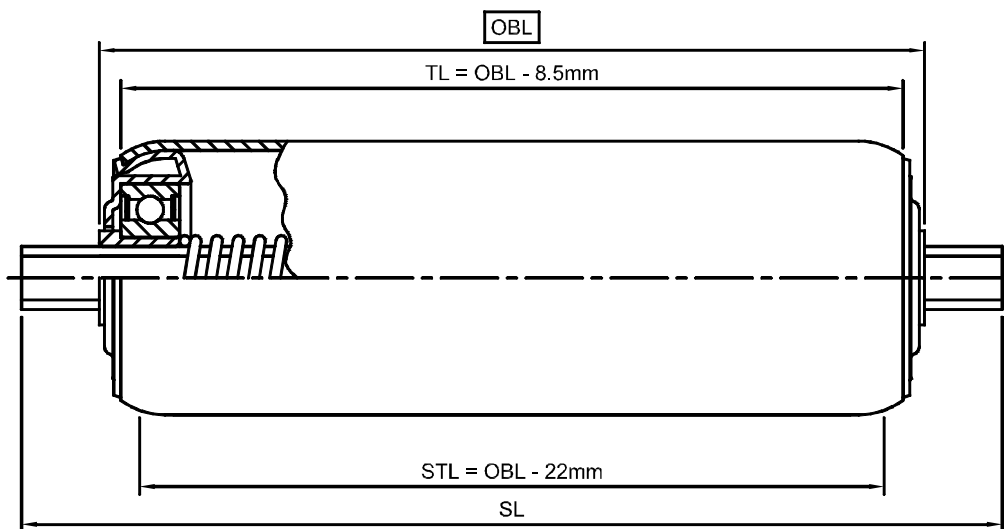
- Max. speed 40m/min.
- Max. static load 80kg.
- For central point load, reduce load rating by 1/3.

Common uses: Very quiet & free running gravity rollers.

Conveyor Rollers

505

Tube Diameter – 50, & 50.8mm



Tube	Bearings	Shaft
<u>Materials:</u>		<u>Materials:</u>
50 x 1.5 Galv. steel	Precision bearing	Standard - Mild steel
	Steel housing & bush	Option - Stainless steel
	Zinc plated	<u>Size:</u>
		Standard – 11Hex
		Option – Ø8, Ø10, Ø11, & Ø12mm
		<u>Type:</u>
		Standard – SP
		Options – DL, F, FL, FT, L, MT

- Load Rating kg (Minimum applies).

Roller Length (mm)	Tube Material Steel	Shaft					
		Non Fixed			Fixed		
		Ø8mm	Ø10mm	11H	Ø8mm	Ø10mm	11H
100	180	100	180	180	100	180	180
200	180	80	120	180	80	160	180
300	180	40	90	160	80	160	180
400	170	30	80	80	80	160	180
500	160	20	70	70	80	160	180
600	120	15	60	65	80	160	180
700	80	10	50	60	80	160	180
800	60	5	40	55	80	160	180
900	45		30	50	80	160	180
1000	35		20	45	80	160	180
1100	25		10	40	80	160	180
1200	20		5	35	80	160	180

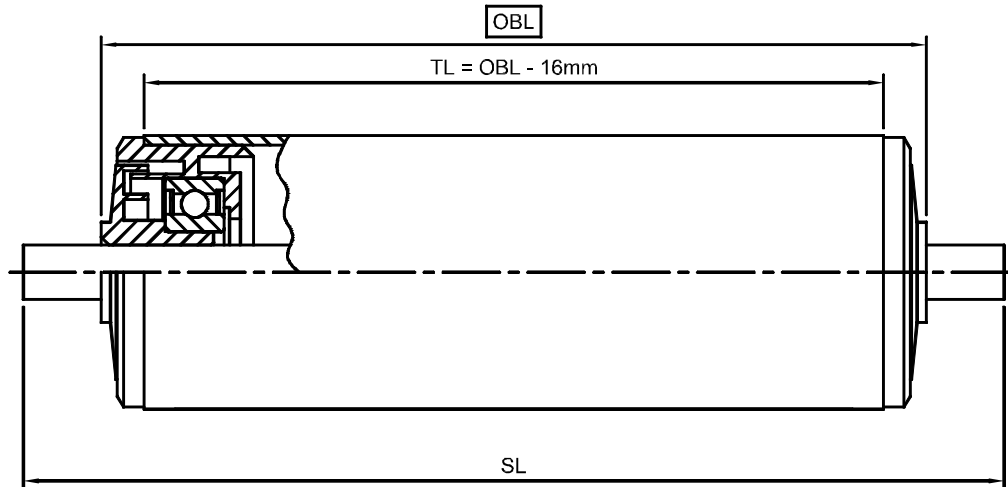
- Max. speed 70m/min.
- Max. static load 150kg.
- For central point load, reduce load rating by 1/3.

Common uses: Gravity rollers where plastic housing is not applicable – eg. high or low temperature.

Conveyor Rollers

507

Tube Diameter – 50, & 50.8mm



Tube	Bearings	Shaft
<u>Materials:</u>		<u>Materials:</u>
50 x 1.5 Galv. steel	Precision bearing	Standard - Mild steel
50.8 x 1.85 Galv steel	Black polypropylene housing and labyrinth seal	Option - Stainless steel
50 x 1.5 S/S	Antistatic except Ø8mm	<u>Size:</u>
50.8 x 2 S/S	<u>Option:</u>	Standard – 11Hex
50.8 x 2 Aluminium	Stainless steel bearing (SS)	Option – Ø8, Ø10, Ø11, Ø12 & Ali D
50 x 2.8 Dynopipe (white)		<u>Type:</u>
		Standard – SP
		Options – DL, F, FL, FT, L, MT

- Load Rating kg (Minimum applies).

Roller Length (mm)	Tube Material				Shaft							
	Dyno pipe	Aluminium	Steel	S/S	Non Fixed				Fixed			
					Ø8	Ø10	11H, Ø12	Ø14	Ø8	Ø10	11H, Ø12	Ø14
100	40	80	180	180	100	180	180	180	100	180	180	180
200	30	60	180	180	80	120	180	180	80	160	180	180
300	30	60	180	180	40	90	160	180	80	160	180	180
400	28	50	170	180	30	80	80	180	80	160	180	180
500	16	40	160	170	20	70	70	160	80	160	180	180
600	12	30	120	160	15	60	65	140	80	160	180	180
700	5	25	80	120	10	50	60	120	80	160	180	180
800	3	20	60	80	5	40	55	110	80	160	180	180
900	2	10	45	60		30	50	90	80	160	180	180
1000	1	6	35	50		20	45	85	80	160	180	180
1100		4	25	40		10	40	80	80	160	180	180
1200		2	20	30		5	35	75	80	160	180	180

- Max. speed 70m/min.
- Max. static load 160kg.
- For central point load, reduce load rating by 1/3.

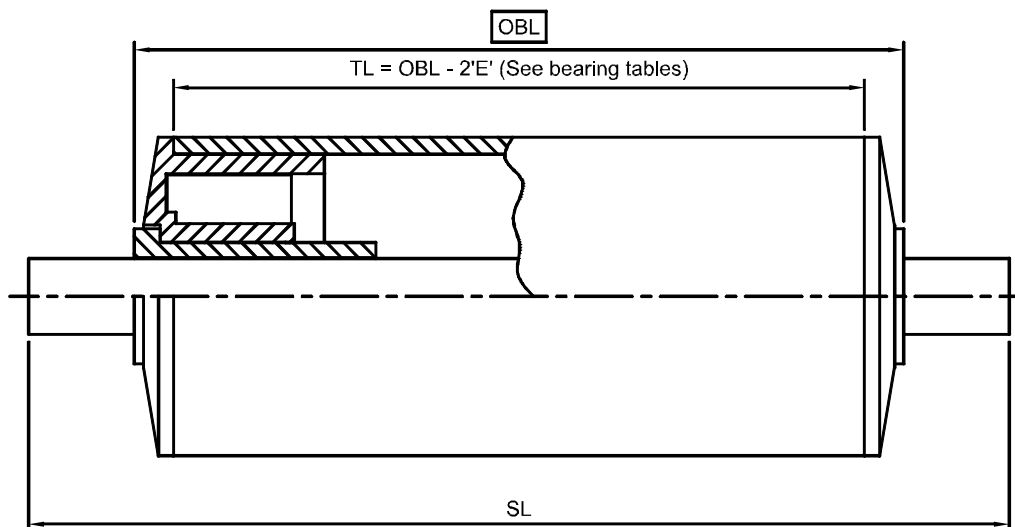
Common uses: Very popular high quality roller.
Gravity rollers.
Powered systems.

Options: Can be fitted with chain sprocket (reduced load rating).
Blind bearing housings available.
Headed bearing housing to retain taper.

Conveyor Rollers

510

Tube Diameter – 50.8mm



Tube	Bearings	Shaft
<u>Materials:</u>		<u>Materials:</u>
50.8 x 1.5 Galv. steel	Bushed type	Mild steel
50.8 x 1.5 S/S	White ABS housing	Stainless steel
	White acetal bush up to 10mm	<u>Size:</u>
	Black nylon bush over 10mm	Standard – Ø8, Ø9.5mm
	Blind bushes – see bearing tables	Option – Ø6, Ø10, Ø11, Ø12mm
		<u>Type:</u>
		Standard – SP
		Options – DL, F, FT, L

- Load Rating kg (Minimum applies).

Roller Length (mm)	Tube Material	Shaft			
	S/S or Steel	Ø6mm	Ø8mm	Ø10mm	Ø12mm
100	35	30	35	35	35
200	35	20	35	35	35
300	35	10	30	35	35
400	35	2	25	35	35
500	35	1	20	35	35
600	35		15	35	35
700	35		10	30	35
800	35			25	35
900	35			20	35
1000	35	Shaded		10	35
1100	35	sizes not			35
1200	35	recommended			35

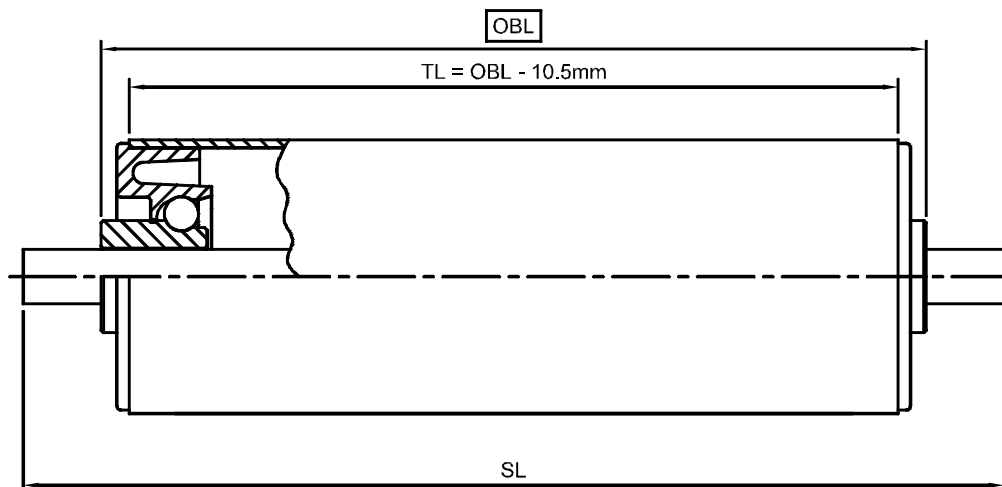
- Rated speed 20m/min (speed can be increased with decreased load).
- Max. static load 30kg.
- For central point load, reduce load rating by 1/3.

Common uses: Cheapest 2" S/S roller.

Conveyor Rollers

511
512

Tube Diameter – 50.8mm



Tube	Bearings	Shaft
<u>Materials:</u>		<u>Materials:</u>
50.8 x 1.5 Galv. steel	(511) Black acetal race	Aluminium 10 x 8 Q
50.8 x 1.5 S/S	Carbon steel balls	Mild steel Ø10mm
50.8 x 1.85 Aluminium	(512) Red acetal race	S/S Ø10mm
	S/S balls	<u>Special options:</u>
		Ø11mm M/S or S/S
		Ø12mm M/S or S/S
	<u>Options:</u>	<u>Type:</u>
	Greased (G)	Standard – SP
		Options – Aluminium Q - DL, F, L
		– M/S or S/S –DL, F, FL, FT, L, MT

- Load Rating kg (Minimum applies).

Roller Length (mm)	Tube Material		Shaft		
	Aluminium	S/S or Steel	Aluminium Q	Ø10mm	Ø12mm
100	40	40	30	40	40
200	40	40	30	40	40
300	40	40	25	40	40
400	40	40	20	40	40
500	40	40	16	40	40
600	30	40	10	35	40
700	25	40	5	30	40
800	20	40	2	25	40
900	10	35	1	20	40
1000	6	25		10	40
1100	4	20			40
1200	2	15			40

- Max. speed 20m/min.
- Max. static load 25kg.

Common uses: Gravity rollers.

Light belt supports.

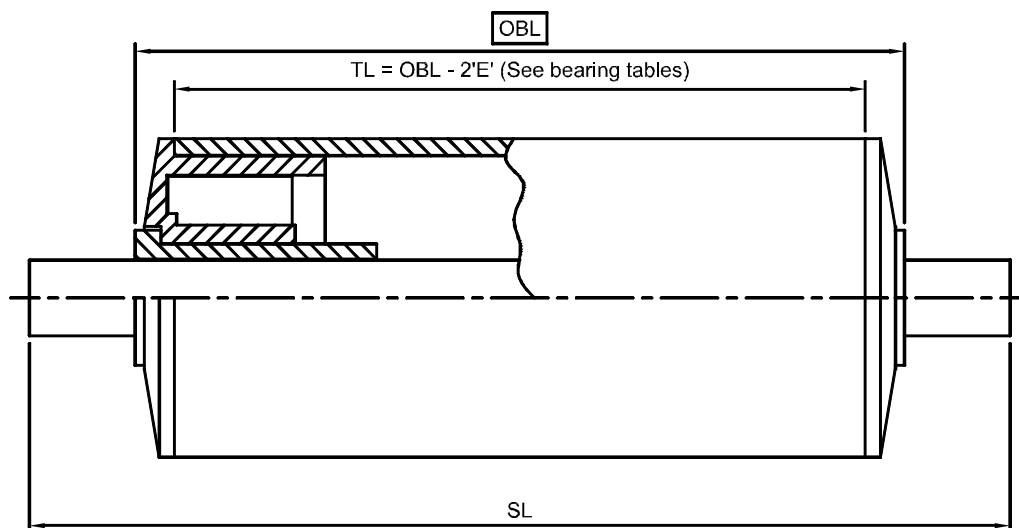
Line shaft driven roller, especially if S/S required.

General and food grade requirements.

Conveyor Rollers

600

Tube Diameter – 60.3mm



Tube	Bearings	Shaft
<u>Materials:</u>		<u>Materials:</u>
60 x 2.8 PVC (50PN9)	Bushed type	Mild steel
	White ABS housing	Stainless steel
	White acetal bush up to 10mm	<u>Size:</u>
	Black nylon bush over 10mm	Standard – Ø8, Ø9.5mm
	Blind bushes – see bearing tables	Option – Ø6, Ø10, Ø11, Ø12mm
		<u>Type:</u>
		Standard – SP
		Options – DL, F, L, MT

- Load Rating kg (Minimum applies).

Roller Length	Tube Material	Shaft			
(mm)	PVC	Ø6mm	Ø8mm	Ø10mm	Ø12mm
100	35	30	35	35	35
200	35	20	35	35	35
300	25	10	30	35	35
400	20	2	25	35	35
500	18	1	20	35	35
600	12		15	35	35
700	10		10	30	35
800	7			25	35
900	5			20	35
1000	2	Shaded		10	35
1100		sizes not			35
1200		recommended			35

- Rated speed 20m/min (speed can be increased with decreased load).
- Max. static load 30kg.
- For central point load, reduce load rating by 1/3.
- Note; extra heavy duty, 19mm shaft available (special order).

Common uses: General purpose gravity rollers.

Belt supports.

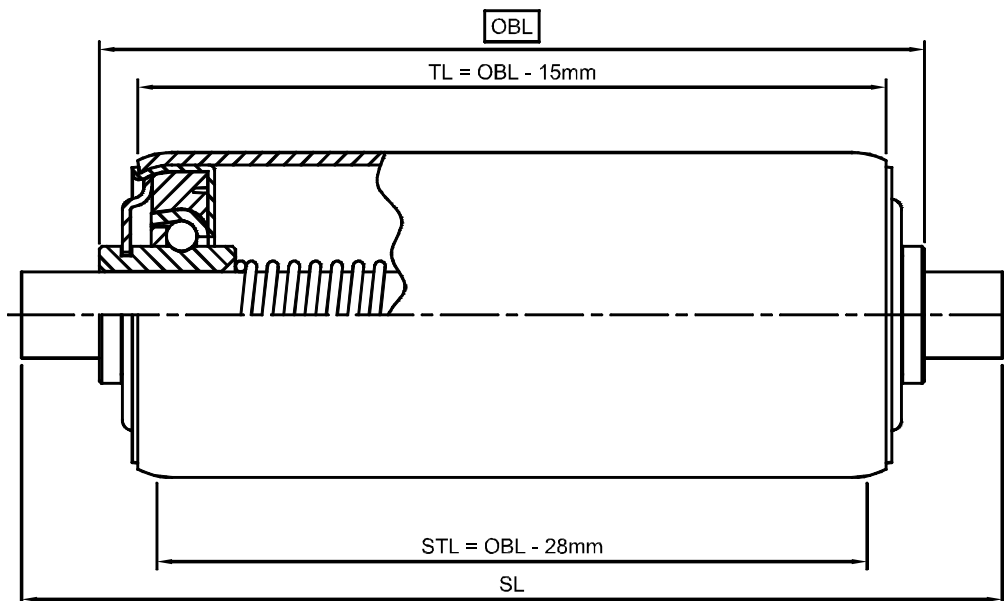
Food factories.

Fruit elevators.

Conveyor Rollers

604

Tube Diameter – 60.3mm



Tube	Bearings	Shaft
<u>Materials:</u>		<u>Materials:</u>
Standard;	Steel ball bearing	Mild steel
60.3 x 2.3 Galv. steel	Nylon housing and shield	Stainless steel
<u>Option;</u>	Steel cup	<u>Size:</u>
60.3 x 3.6 Galv. steel	Nylon cage	11H
		<u>Type:</u>
		Standard – SP
		Options – DL, F, FL, FT, L, MT

- Load Rating kg (Minimum applies).

Roller Length	Tube Material	Shaft	
(mm)	Steel	Non Fixed	Fixed
		11H	11H
100	280	250	280
200	280	200	280
300	280	160	250
400	280	120	250
600	240	80	250
800	140	50	250
1000	100	30	250
1200	80	20	250
1400	60		250
1600	40		250
1800	20		250
2000			250

- Rated speed 50m/min (speed can be increased with decreased load).
- Max. static load 240kg.
- For central point load, reduce load rating by 1/3.

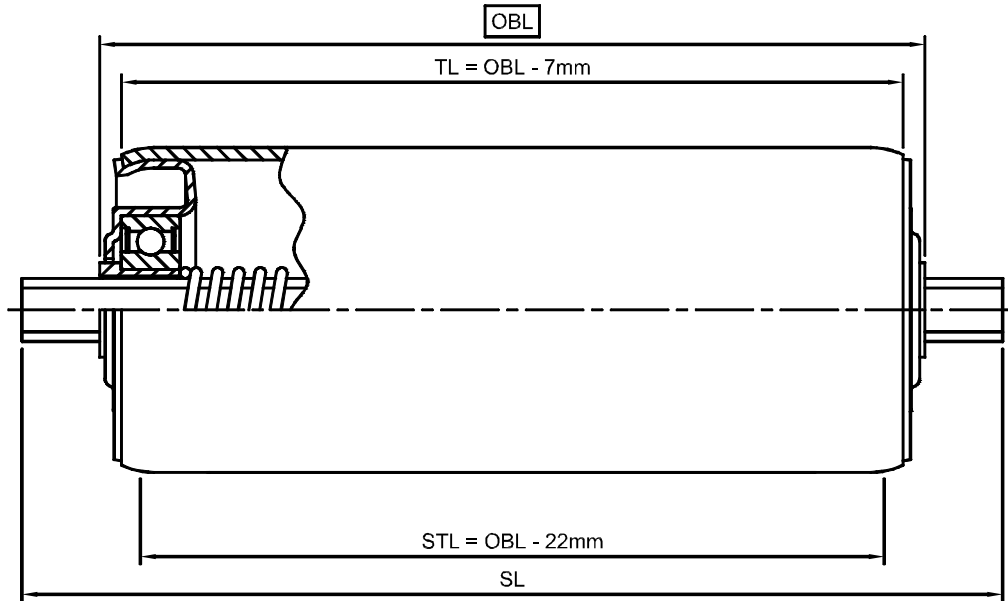
Common uses: Quiet and free running gravity roller.

Frozen and heavy carton manual impact loads.

Conveyor Rollers

605

Tube Diameter – 60.3mm



Tube	Bearings	Shaft
<u>Materials:</u>		<u>Materials:</u>
Standard;	Precision bearing	Standard - Mild steel
60.3 x 2.3 Galv. steel	Steel housing & bush	Option - Stainless steel
Option;	Zinc plated	<u>Size:</u>
60.3 x 3.6 Galv. steel		Standard – 11Hex
		Option – Ø8, Ø10, Ø11, & Ø12mm
		<u>Type:</u>
		Standard – SP
		Options – DL, F, FL, FT, L, MT

- Load Rating kg (Minimum applies).

Roller Length (mm)	Tube Material S/S or Steel	Shaft					
		Non Fixed			Fixed		
		Ø8mm	Ø10mm	11H	Ø8mm	Ø10mm	11H
100	180	100	180	180	100	180	180
200	180	80	120	180	80	160	180
300	180	40	90	160	80	160	180
400	180	30	80	80	80	160	180
500	180	20	70	70	80	160	180
600	180	15	60	65	80	160	180
700	160	10	50	60	80	160	180
800	140	5	40	55	80	160	180
900	100		30	50	80	160	180
1000	80		20	45	80	160	180
1100	60		10	40	80	160	180
1200	50		5	35	80	160	180

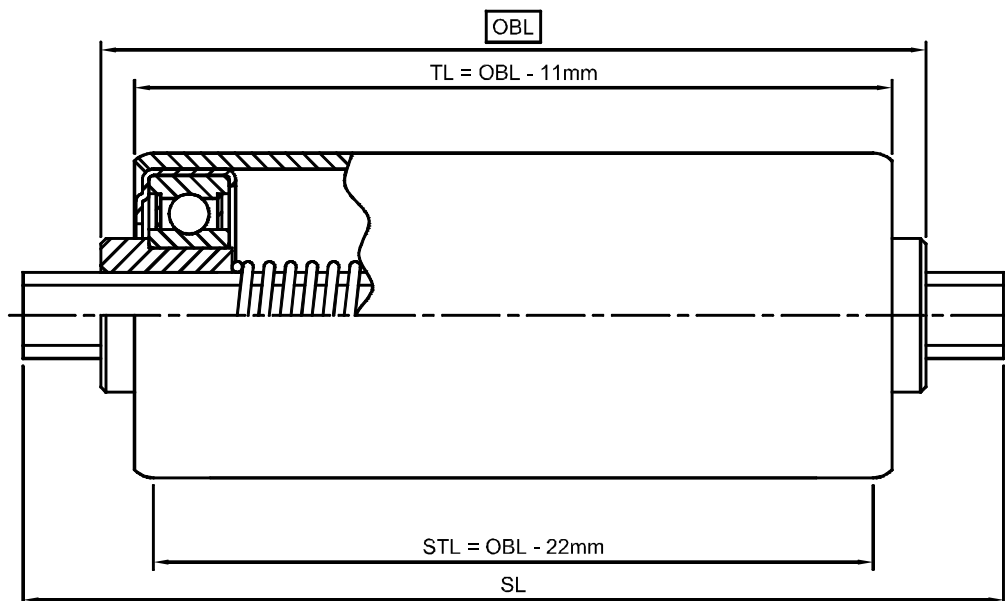
- Max. speed 70m/min.
- Max. static load 150kg.
- For central point load, reduce load rating by 1/3.

Common uses; Gravity rollers where plastic housing is not applicable – eg. high or low temperature

Conveyor Rollers

605HD

Tube Diameter – 60.3mm



Tube	Bearings	Shaft
<u>Materials:</u>		<u>Materials:</u>
60.3 x 3.6 Galv. steel	Precision bearing	Standard - Mild steel
	Steel housing and bush	Option - Stainless steel
	Zinc plated	<u>Size:</u>
		Standard – 16H
		Option – Ø19mm, Ø16mm
		<u>Type:</u>
		Standard – SP
		Options – DL, F, FL, FT, L, MT

- Load Rating kg (Minimum applies).

Roller Length (mm)	Tube Material Steel	Shaft			
		Non Fixed		Fixed	
		16H	Ø19mm	16H	Ø19mm
100	400	400	400	400	400
200	400	400	400	400	400
300	400	400	400	400	400
400	400	400	400	400	400
600	300	280	400	400	400
800	250	200	400	400	400
1000	200	160	320	400	400
1200	160	140	260	400	400
1400	120	120	200	400	400
1600	80	100	140	400	400
1800	55	70	120	400	400
2000	40	50	100	400	400

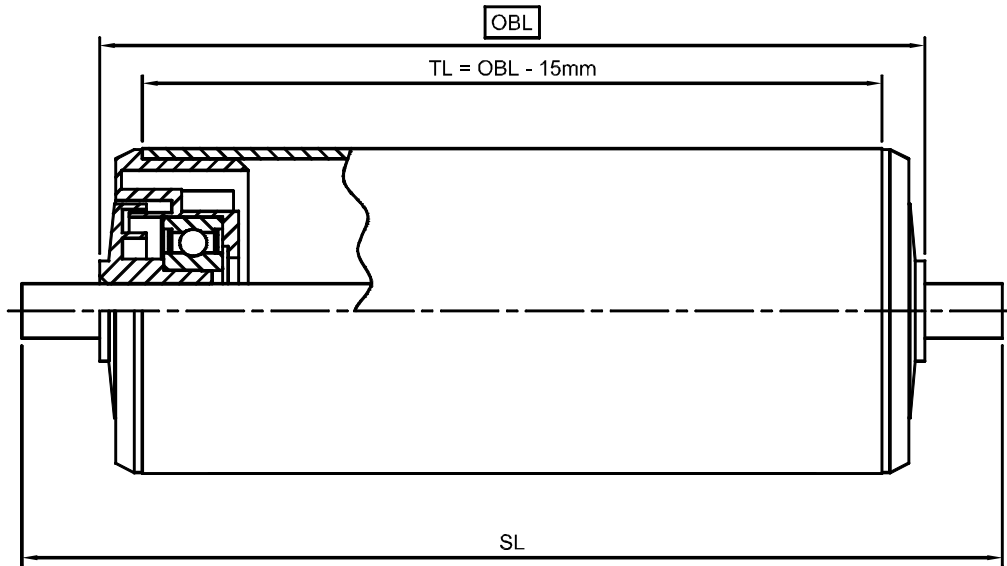
- Rated speed 70m/min (speed can be increased with decreased load).
- Max. static load 380kg.
- For central point load, reduce load rating by 1/3.

Common uses: Heavy in feeds to machines.

Conveyor Rollers

607

Tube Diameter – 60.3mm



Tube	Bearings	Shaft
<u>Materials:</u>		<u>Materials:</u>
Standard;	Precision bearing	Standard - Mild steel
60.3 x 2.3 Galv. steel	Black polypropylene housing and	Option - Stainless steel
60.3 x 2.3 S/S (50 NB sch. 10)	labyrinth seal	<u>Size:</u>
Option;	Antistatic except Ø8mm	Standard – 11Hex
60.3 x 3.6 Galv. steel	<u>Option:</u>	Option – Ø8, Ø10, Ø11, Ø12 & Ali D
	S/S precision bearing (SS)	<u>Type:</u>
		Standard – SP
		Options – DL, F, FL, FT, L, MT

- Load Rating kg (Minimum applies).

Roller Length (mm)	Tube Material		Shaft							
	Steel	S/S	Non Fixed				Fixed			
			Ø8mm	Ø10mm	11H,Ø12	Ø14mm	Ø8mm	Ø10mm	11H,Ø12	Ø14mm
100	180	180	100	180	180	180	100	180	180	180
200	180	180	80	120	180	180	80	160	180	180
300	180	180	40	90	160	180	80	160	180	180
400	180	180	30	80	80	180	80	160	180	180
500	180	180	20	70	70	160	80	160	180	180
600	180	180	15	60	65	140	80	160	180	180
700	160	180	10	50	60	120	80	160	180	180
800	140	160	5	40	55	110	80	160	180	180
900	100	140		30	50	90	80	160	180	180
1000	80	100		20	45	85	80	160	180	180
1100	60	80		10	40	80	80	160	180	180
1200	50	60		5	35	75	80	160	180	180

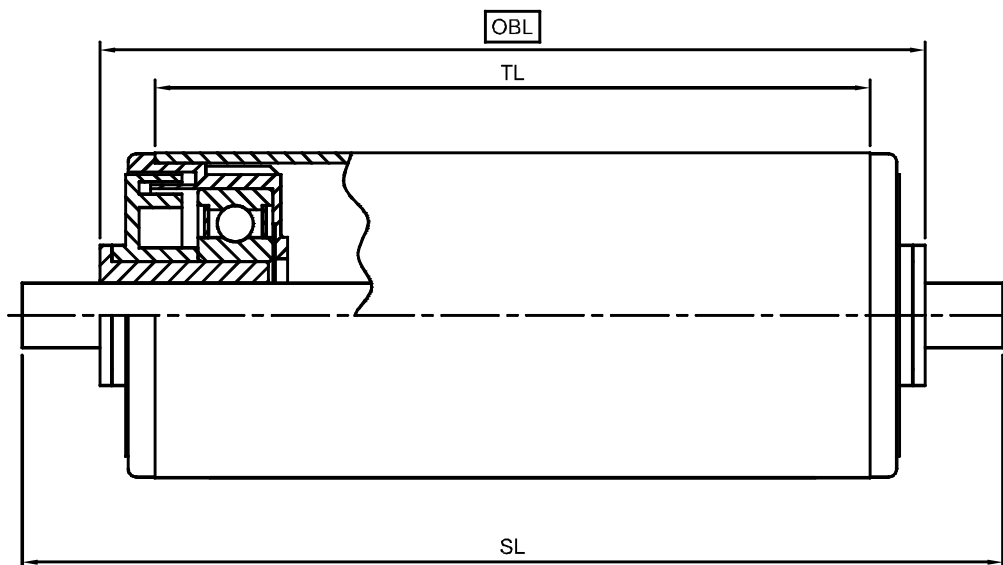
- Max. speed 70m/min.
- Max. static load 160kg.
- For central point load, reduce load rating by 1/3.
- Options; Can be fitted with chain sprockets (reduced load rating).

Common uses; More robust roller than 507 especially for longer rollers.

Conveyor Rollers

607HD

Tube Diameter – 60.3mm



TL = OBL - 20mm (Ø12 & Ø16mm)
= OBL - 15.5mm (Ø20mm)

Tube	Bearings	Shaft
<u>Materials:</u>		<u>Materials:</u>
Standard;	Precision bearing	Standard - Mild steel
60.3 x 2.3 Galv. steel	Black nylon housing	Option - Stainless steel
60.3 x 3.6 S/S (50 NB sch. 10)	Black labyrinth and reducer bush	<u>Size:</u>
Option;	<u>Option:</u>	Ø12, Ø16, & Ø20mm
60.3 x 3.6 Galv. steel	S/S precision bearing (SS)	<u>Type:</u>
		Standard - Ø12, Ø16 - SP
		Standard - Ø20 - L
		Options – DL, F, FL, FT, L, MT

- Load Rating kg (Minimum applies).

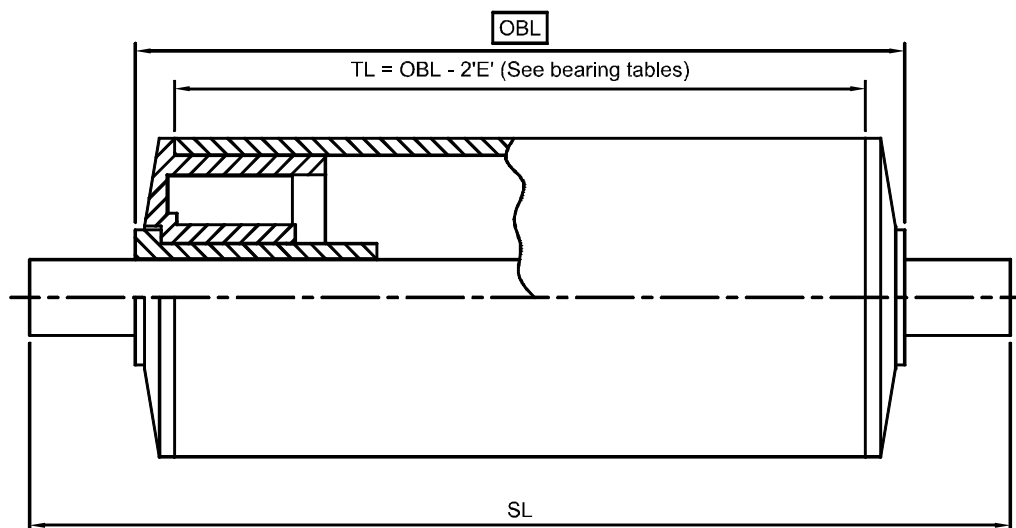
Roller Length (mm)	Tube Material Steel	Shaft					
		Non Fixed			Fixed		
		Ø12mm	Ø16mm	Ø20mm	Ø12mm	Ø16mm	Ø20mm
100	280	250	350	350	300	350	350
200	280	200	350	350	280	350	350
300	280	160	350	350	250	350	350
400	280	120	350	350	250	350	350
600	240	80	280	350	250	350	350
800	140	50	200	350	250	350	350
1000	100	30	160	320	250	350	350
1200	80	20	140	260	250	350	350
1400	60		120	200	250	350	350
1600	40		100	140	250	350	350
1800	20		70	120	250	350	350
2000			50	100	250	350	350

- Rated speed 70m/min.
- Max. static load 250kg.
- For central point load, reduce load rating by 1/3.
- Option; For heavy duty, all S/S & plastic roller.

Conveyor Rollers

750

Tube Diameter – 75mm



Tube	Bearings	Shaft
<u>Materials:</u>		<u>Materials:</u>
75 x 3 PVC (65PN9)	Bushed type	Mild steel
	White ABS housing	Stainless steel
	White acetal bush up to 10mm	<u>Size:</u>
	Black nylon bush over 10mm	Standard – Ø8, Ø9.5mm
		Option – Ø6, Ø10, Ø11, Ø12mm
		<u>Type:</u>
		Standard – SP
		Options – DL, F, FT, L

- Load Rating kg (Minimum applies).

Roller Length	Tube Material	Shaft			
(mm)	PVC	Ø6mm	Ø8mm	Ø10mm	Ø12mm
100	40	30	40	40	40
200	40	20	35	40	40
300	40	10	30	40	40
400	40	2	25	40	40
500	35	1	20	40	40
600	30		15	35	40
700	22		10	30	40
800	15			25	40
900	10			20	40
1000	5	Shaded		10	40
1100	3	sizes not			40
1200	2	recommended			40

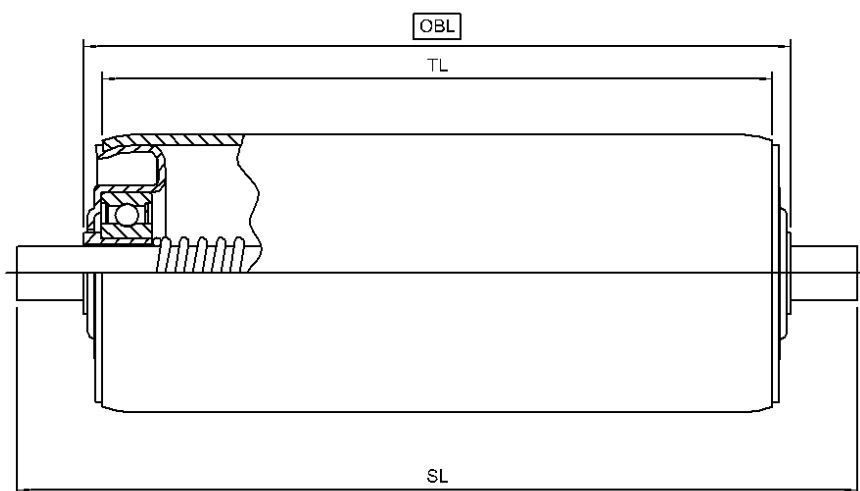
- Rated speed 20m/min (speed can be increased with decreased load).
- Max. static load 35kg.
- For central point load, reduce load rating by 1/3.

Common uses: Vegetable handling conveyors (pumpkins, squash)

Conveyor Rollers

755

Tube Diameter – 76mm



$$\begin{aligned} TL &= OBL - 10 \text{ (16mm)} \\ &= OBL - 7 \text{ (19mm)} \end{aligned}$$

Tube	Bearings	Shaft
<u>Materials:</u>		<u>Materials:</u>
76 x 3.2 Galv. Steel (65 NB light)	Precision bearing	Standard - Mild steel
	Steel housing and bush	Option - Stainless steel
	Zinc plated	<u>Size:</u>
		Standard – Ø16
		Option – Ø19mm
		<u>Type:</u>
		Standard – SP
		Options – DL, F, FL, FT, L, MT

- Load Rating kg (Minimum applies).

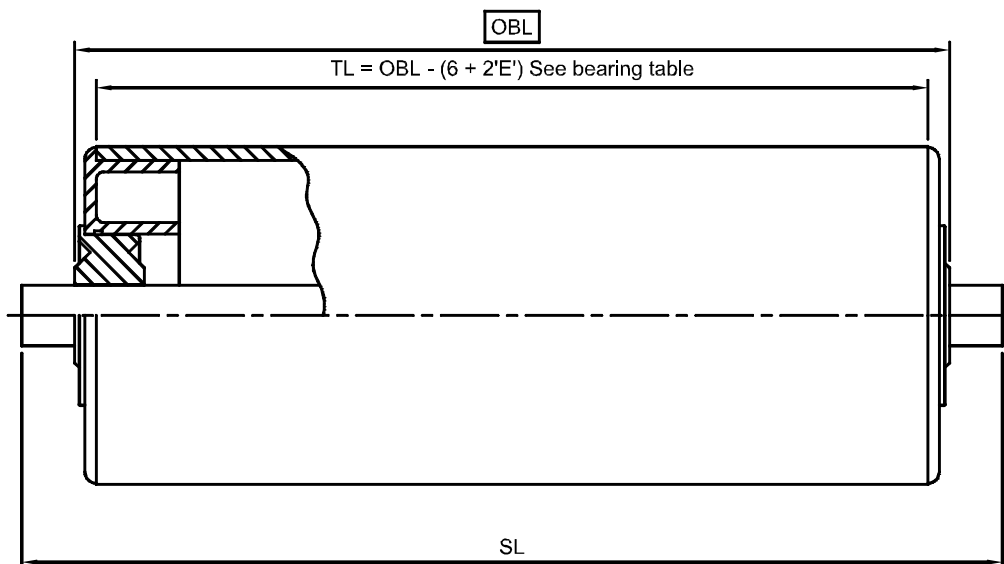
Roller Length (mm)	Tube Material Steel	Shaft			
		Non Fixed		Fixed	
		Ø16	Ø19mm	Ø16	Ø19mm
100	350	350	350	350	350
200	350	350	350	350	350
300	350	350	350	350	350
400	350	350	350	350	350
500	350	300	350	350	350
600	350	260	350	350	350
700	350	210	350	350	350
800	280	180	350	350	350
1000	110	140	320	350	350
1200	80	110	260	350	350
1400	70	100	240	350	350
1600	50	80	200	350	350

- Max. speed 100m/min.
- Max. static load 300kg.
- For central point load, reduce load rating by 1/3.

Conveyor Rollers

890

Tube Diameter – 89mm



Tube	Bearings	Shaft
<u>Materials:</u>		<u>See:</u>
89 x 3.5 PVC (80 PN9)	White ABS reducer (890) with	480 / 480HD / 481 / 482 / 487
	480HD black nylon bush, or	
	Ball bearing with acetal race	
	Black race / carbon steel balls (481)	
	White race / SS balls (482)	
	487 white race precision bearing	
	option 487 with S/S precision bearing	

- Load Rating kg (Minimum applies).

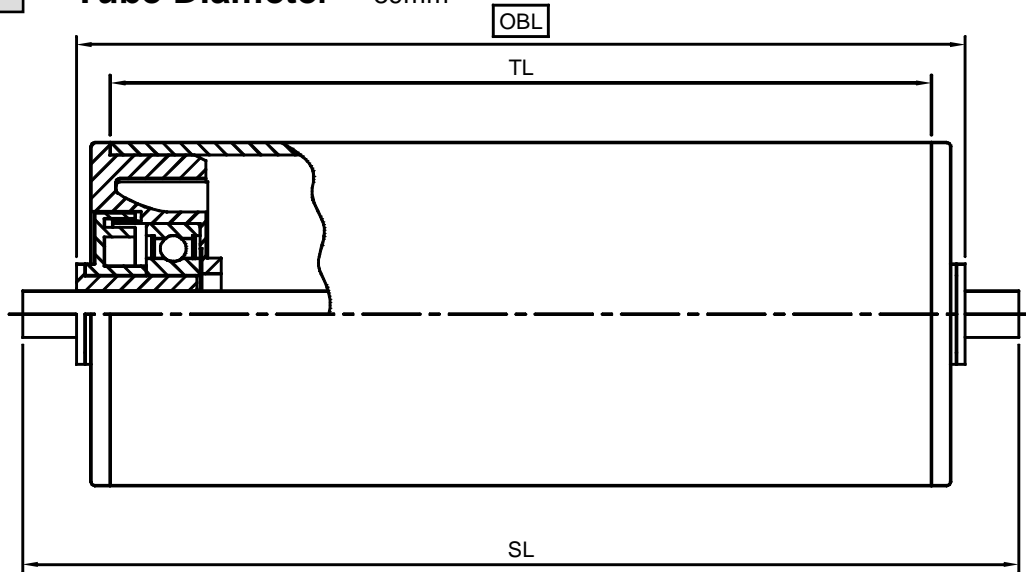
Roller Length	Tube Material	Shaft			
(mm)	PVC	See 480	See 480HD	See 481 / 482	See 487
100	50				
200	50				
300	50				
400	50				
500	50				
600	50				
700	40				
800	28				
900	20				
1000	12				
1100	10				
1200	5				

- Max. speed – See 480, 480HD, 481, 482, or 487 plus 80%
- Max. static load 30kg.
- For central point load, reduce load rating by 1/3.
- Note; extra heavy duty Ø35, or Ø38mm shaft available – special order.

Conveyor Rollers

897

Tube Diameter – 89mm



TL = OBL - 18mm (Ø12 & Ø16mm)
= OBL - 15.5mm (Ø20mm)

Tube	Bearings	Shaft
<u>Materials:</u>		<u>Materials:</u>
89 x 3.2 Galv. Steel (80 NB light)	Precision bearing	Standard - Mild steel
89 x 3.2 S/S (80 NB sch. 10)	Black polycarbonate housing	Option - Stainless steel
89 x 3.2 Aluminium	Black polypropylene labyrinth and reducer bush	<u>Size:</u>
	<u>Option:</u>	Ø12, Ø16, & Ø20mm
	S/S precision bearing (SS)	<u>Type:</u>
		Standard - Ø12, Ø16 - SP
		Standard - Ø20 - L
		Options – DL, F, FL, FT, L, MT

- Load Rating kg (Minimum applies).

Roller Length (mm)	Tube Material			Shaft					
	Aluminium	Galv. steel	S/S	Non Fixed			Fixed		
				Ø12mm	Ø16mm	Ø20mm	Ø12mm	Ø16mm	Ø20mm
100	350	360	360	250	360	360	350	360	360
200	350	360	360	200	360	360	325	360	360
300	350	360	360	160	360	360	325	360	360
400	350	360	360	120	360	360	325	360	360
600	250	360	360	80	280	360	325	360	360
800	150	360	360	50	200	360	325	360	360
1000	80	360	360	30	160	320	325	360	360
1200	50	360	360	20	140	260	325	360	360
1400	30	350	360		120	200	325	360	360
1600	10	300	320		100	140	325	360	360
1800	2	200	220		70	120	325	360	360
2000		130	160		50	100	325	360	360

- Rated speed 110m/min.
- Max. static load 250kg.
- For central point load, reduce load rating by 1/3.
- Option; For heavy duty, all S/S & plastic roller.

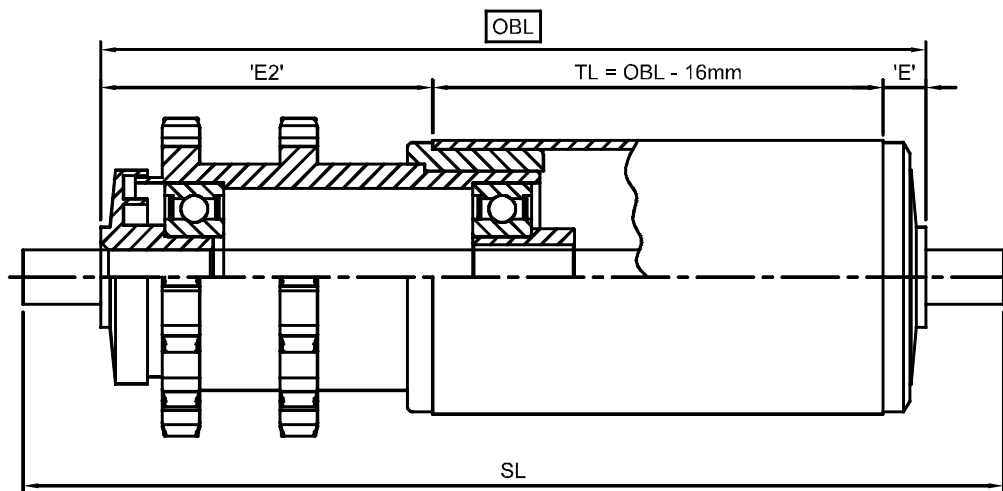
Common uses: Pallet rollers (easy to push).

Can be fitted with nylon sprocket, for light drive at reduced load rating.

Conveyor Rollers

Driven Roller

Tube Diameter – 50, 60, & 89mm



	'E'			'E2'
	Tube Size			
	Ø50mm	Ø60mm	Ø89mm	Ø50, Ø60, & Ø89mm
Z9S	8	7.5	9.5	32
Z14S	8	7.5	9.5	39
Z14D	8	7.5	9.5	61
TB20	8	7.5	9.5	49.5
<u>Bearing Type</u>	507	607	897	
<u>Accumulating Pressure</u>	4 – 7%	2 - 5%	1 – 3%	
	Double accumulating pressure for double ended drive			

- Standard Ø12, & Ø14mm shaft.
- Max. product weight 200kg.
- Max. total product weight on conveyor 2 tonne.
- Max. length of conveyor – 50 rollers or 15m each direction from drive, whichever is greater.
- Speed; Chain sprocket 30 m/min (without excessive noise).
Toothed belt 90 m/min.

Conveyor Rollers

Driven Roller (Cont.)

Loose (Accumulating roller)

- Load Rating kg (Minimum applies).

Roller Length (mm)	Tube Material				Shaft			
	Dynopipe	Aluminium	Steel		Loose		Fixed	
	Ø50mm	Ø50mm	Ø50mm	Ø60mm	Ø12mm	Ø14mm	Ø12mm	Ø14mm
200	30	45	50	50	50	50	50	50
300	30	45	50	50	45	50	50	50
400	28	40	50	50	40	50	50	50
500	16	30	50	50	36	50	50	50
600	12	25	50	50	28	45	50	50
700	5	20	50	50	23	43	50	50
800	3	10	50	50	19	37	50	50
900	2	5	50	50	17	32	50	50
1000	1	2	50	50	15	28	50	50
1100			50	50	13	25	50	50
1200			50	50	12	23	50	50
1300			45	50	11	21	50	50
1400			35	45	10	20	50	50
1500			20	35	9	18	50	50

- Max. static load 40kg.
- Z9S - Max. static load 20kg.
- Ø60 & Ø89 tubes – Max. 50kg
- Ø10mm shaft – Max. 20kg up to 500 long.
- Ø8mm shaft – Max. 10kg up to 250 long.

Fixed Roller

- Load Rating kg (Minimum applies).

Roller Length (mm)	Tube Material				Shaft			
	Dynopipe	Aluminium	Steel		Loose		Fixed	
	Ø50mm	Ø50mm	Ø50mm	Ø60mm	Ø12mm	Ø14mm	Ø12mm	Ø14mm
200	30	45	90	85	50	90	55	90
300	30	45	90	85	45	80	55	90
400	28	45	90	85	40	70	55	90
500	16	40	90	85	36	68	55	90
600	12	30	90	85	28	52	55	90
700	5	25	90	85	23	43	55	90
800	3	20	90	85	19	36	55	90
900	2	10	90	85	16	31	55	90
1000	1	6	85	85	15	28	55	90
1100		4	80	85	13	25	55	90
1200		2	65	85	12	22	55	90
1300			45	80	11	20	55	80
1400			35	65	10	18	55	80
1500			25	50	9	17	50	80

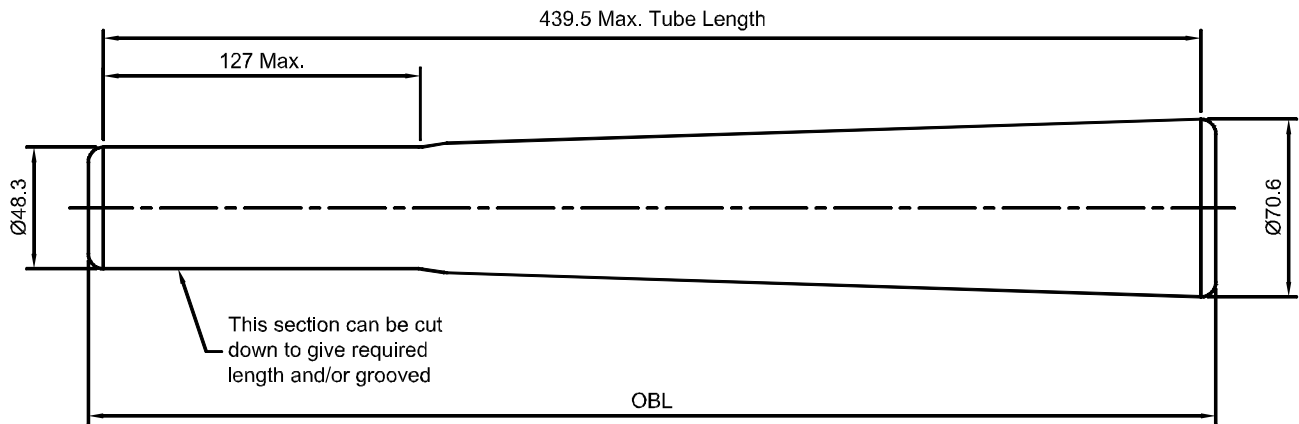
- Max. static load 75kg.
- Z9S - Max. static load 30kg.
- Ø60 & Ø89 tubes – Max. 80kg
- Ø10mm shaft – Max. 20kg up to 500 long.
- Ø8mm shaft – Max. 10kg up to 250 long.

Conveyor Rollers

DNPT4

Dynopipe Taper

- White Dynopipe
- Made for inner radius = 800mm.

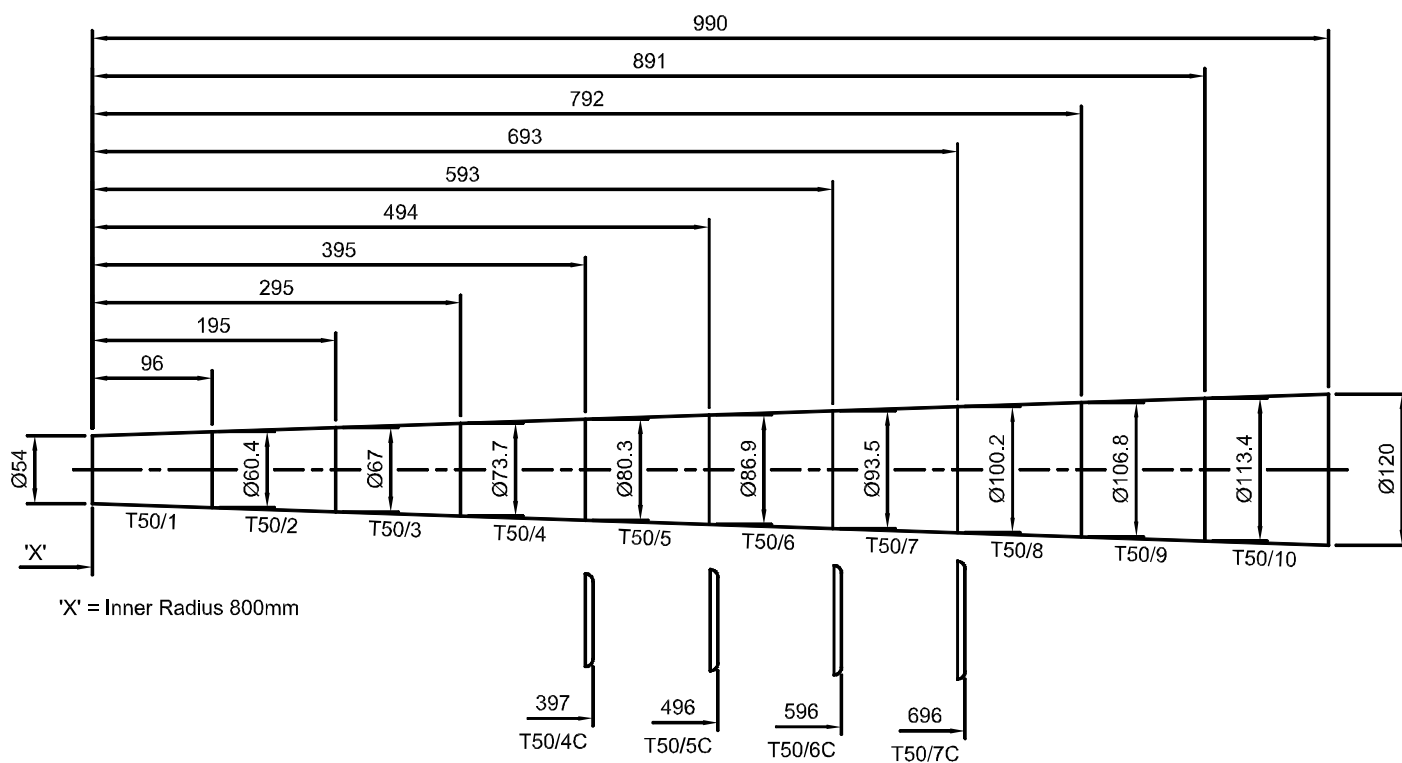


Bearing Type	Maximum Overbearing Length
480-5	453
480-6.5	453
480-8	453
480-9.5	453
480-10	453
480-11	456.5
480-12	454.5
480-12B	450.5
480-12.7	456.5
480HD	449
481/2	446.5
481/2 sealed	448
487	447.5
487 sealed	453.5

Conveyor Rollers

Tapered Elements For Ø50 Tube

- Black polypropylene.
- Can be fitted to any Ø50mm tube roller.
- Recommended with 507T end cap.



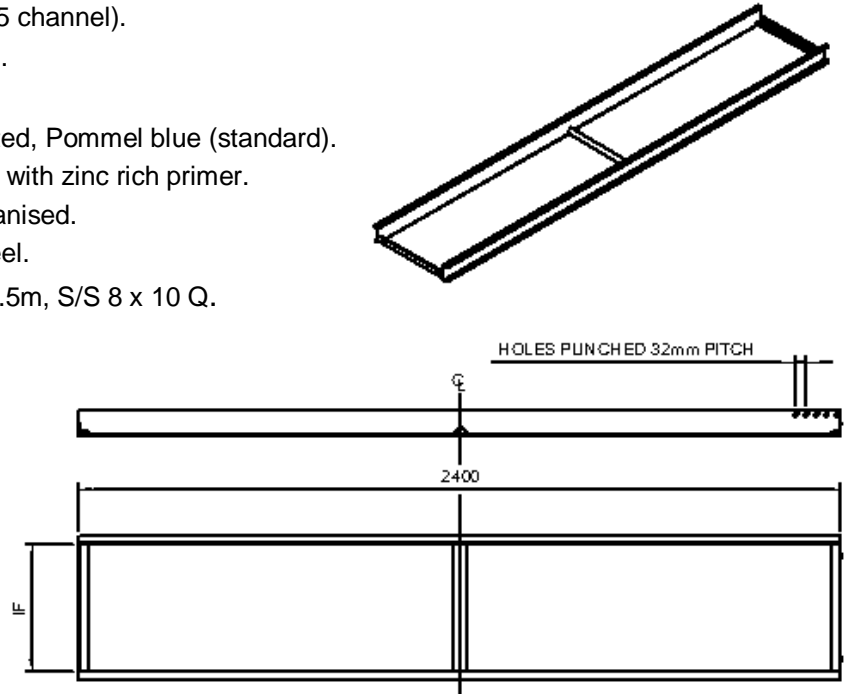
Our End Caps

Gravity Roller Frames

GRF

Gravity Roller Frame

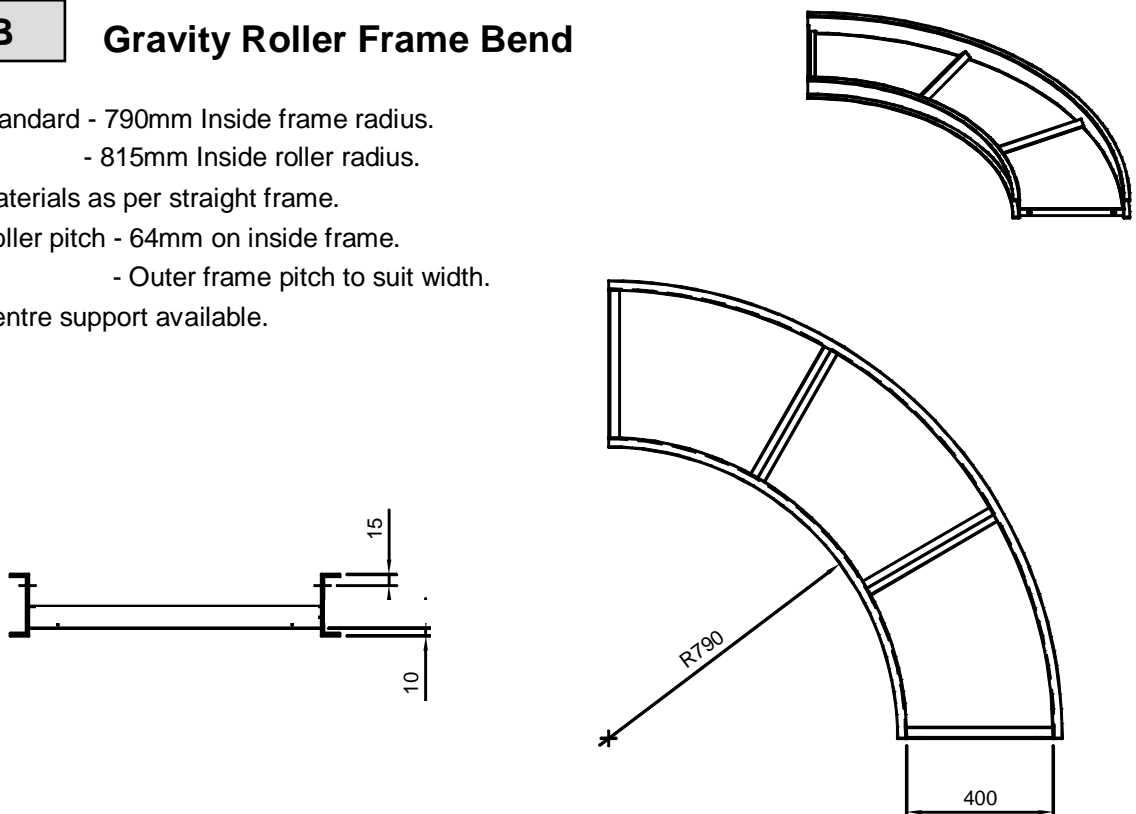
- Standard length = 2.4m (other sizes available).
- Standard widths = 300, 450, 600 & 1000mm Inside frame (other widths available)
- 3mm steel thickness (83 x 25 channel).
- All bolt together construction.
- Holes at 32mm pitch.
- Finish options - Powder coated, Pommel blue (standard).
 - Powder coat with zinc rich primer.
 - Hot dip galvanized.
 - Stainless steel.
- Standard hole sizes; M/S 10.5mm, S/S 8 x 10 Q.
- Options - Hinged gate.
 - Guide rails.



GRF-B

Gravity Roller Frame Bend

- Standard - 790mm Inside frame radius.
 - 815mm Inside roller radius.
- Materials as per straight frame.
- Roller pitch - 64mm on inside frame.
 - Outer frame pitch to suit width.
- Centre support available.

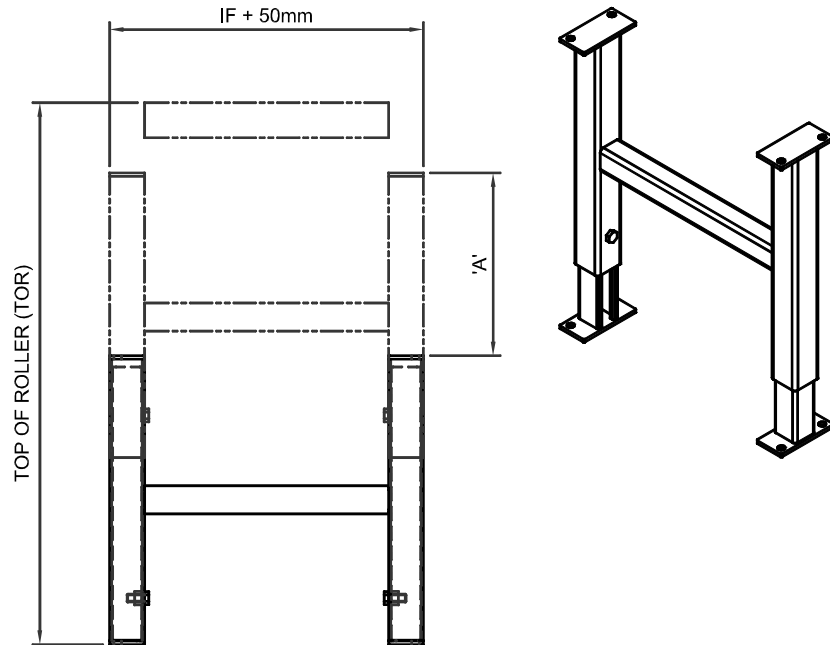


Gravity Roller Stands

GRS-B

Gravity Roller Stand (Bolt on)

- Mild steel.

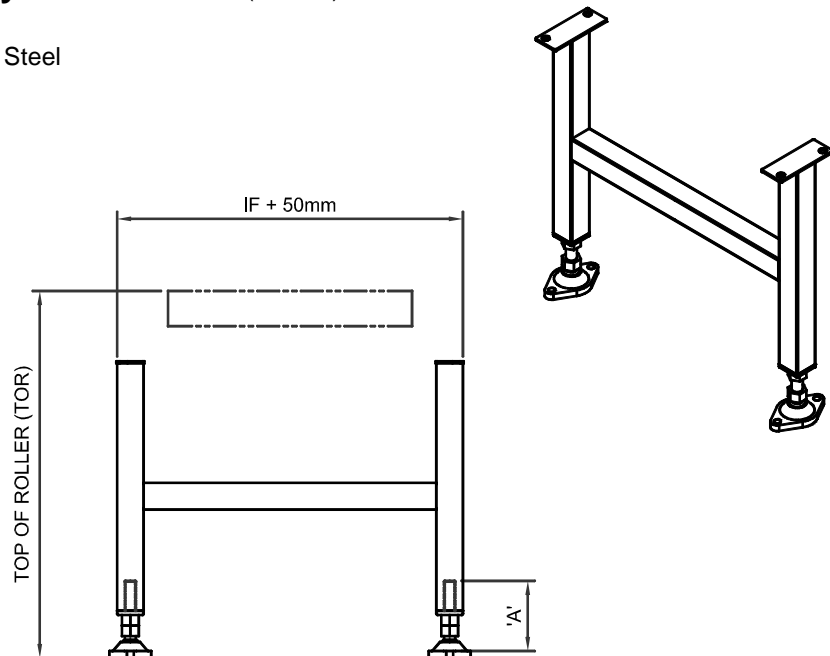


Max. adjustment ('A') = Min. TOR – 150mm.

GRS-B-SS

Gravity Roller Stand (Bolt on)

- Stainless steel, or Mild Steel



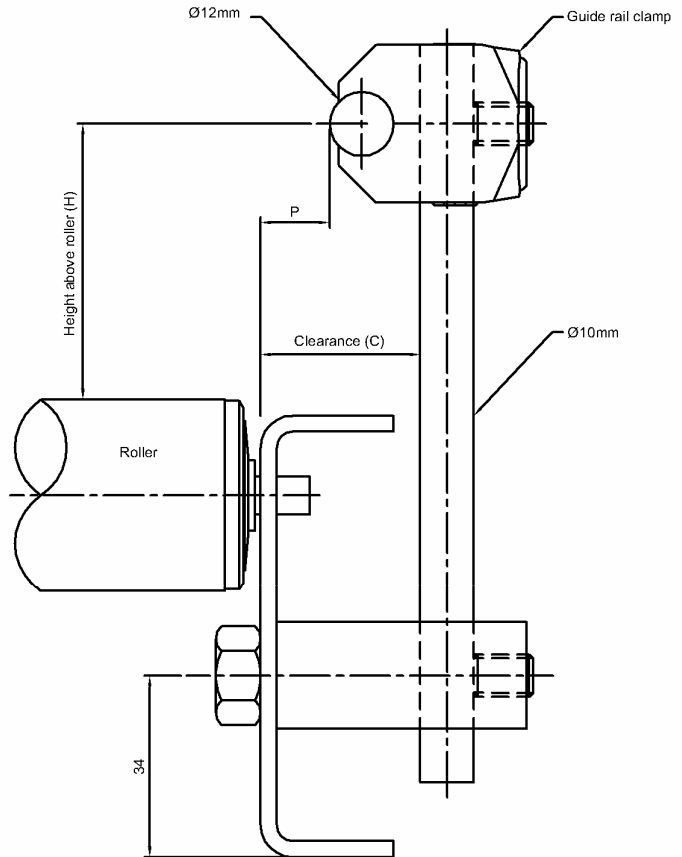
Max. adjustment ('A') = 100mm.

Guide Rail

GR

Guide Rail

- Stainless steel round bar.



GR-C

Guide Rail Clamp

