

RIV-NAIL™



Improves the installation of hinged rivet fasteners on newer, synthetic high-strength belt fabrics, manufactured with special tempered steel to form the beveled ends and yield a smooth, low profile.

A design pattern composed of two to eight Riv-Nails allows for the fasteners to be clinched for maximum pull-out resistance — as the pilot nails do not cut the fabric, but divide it, and allow the rivets to slide between fill and warp yarns. The Riv-Nail is a compression fastener and, as such, does not rely entirely on the belt fabric for resistance to fastener pull-out.





Rivet Hinge Fasteners

are used for major applications that require high strength and small pulleys. These include construction equipment, agriculture, wood products, and mining. Underground mining makes extensive use of these products for conveyors and structures that are extended or withdrawn in the course of mining. All fastener strips are sold one set per carton.

R-2 Rivet Fasteners

With R-2 Rivet Fasteners, installation is a breeze! You get an advantage over the 375 nut and bolt design, where holes must be aligned and punched before installation begins. Plus, the use of fewer rivets translates into additional material and labor savings. R-2 rivet fasteners are available in both galvanized and stainless steel.

STEEL R-2 RIVET FASTENER

NUMBER
R-2-18
R-2-24
R-2-30
R-2-36
R-2-42
R-2-48
R-2-60
R-2-72

R-3 Rivet Fasteners

Installation is fast! Consider the advantages over 375 and 550 nut and bolt design, where holes must be aligned and punched before installation begins. With the R-3, there are 40% fewer Riv-Nails than with the larger R-5 version. All this adds up to material and labor savings.

STEEL R-3 RIVET FASTENER

NUMBER
R-3-18
R-3-24
R-3-30
R-3-36
R-3-42
R-3-48
R-3-60

NON-MAGNETIC STAINLESS RS-2 RIVET FASTENER

NUMBER
RS-2-18
RS-2-24
RS-2-30
RS-2-36
RS-2-42
RS-2-48
RS-2-60
RS-2-72

NON-MAGNETIC STAINLESS RS-3 RIVET FASTENER

NUMBER
RS-3-18
RS-3-24
RS-3-30
RS-3-36
RS-3-42
RS-3-48
RS-3-60



INSTALLATION TOOLS ARE SHOWN ON PAGES 24 TO 28.

TR-4 Rivet Fasteners

The TR-4 is a “true” four-rivet fastener used on belts up to 11.1mm thick and 68kN/m. An advantage of the TR-4 is that the majority of applications involving two-ply and three-ply belts up to 68kN/m full rated working tension can be achieved. The TR-4 also uses 20% fewer rivets, for a huge savings in both materials and labor.

STEEL TR-4 RIVET FASTENER

NUMBER
TR-4-18
TR-4-24
TR-4-30
TR-4-36
TR-4-42
TR-4-48
TR-4-54
TR-4-60
TR-4-72



NON-MAGNETIC STAINLESS TRS-4 RIVET FASTENER

NUMBER
TRS-4-18
TRS-4-24
TRS-4-30
TRS-4-36
TRS-4-42
TRS-4-48
TRS-4-54
TRS-4-60
TRS-4-72

SELECTING SIZE AND METALS

Rivet Hinge fasteners are available in R-2 through R-8 sizes, which fit belts 3.1–19.1mm thick. The fastener strip is cross-scored so it can be easily broken by hand to fit any belt width. Fastener strips are packaged as one set/carton. Hinge pins and Riv-Nail selection are made according to belt thickness and style. These are sold separately.

RIVET HINGE SPECIFICATIONS

PULLEY DIAMETER (MM)	BELT THICKNESS (MM)	KN/M	FASTENER SIZE
125	3.1–9.4	60	2
150	4.7–9.4	60	3
225	5.6–11.1	68	4
225	5.6–11.1	79	5
300	9.4–15.1	140	5½
450	10.3–19.1	210	6
450	10.3–19.1	263	TRC-6, 8

STEEL

Conveyor Accessories uses special grades of high-strength steel that have been annealed for extra durability. These grades may yield 25–35% greater tensile strengths, and have improved properties for long life and wear compared to some steel fasteners. The R-2 and R-3 are made of galvanized coated steel, while TR-4, R-5, and R-6 are fully plated with a zinc “silver” luster to protect all surfaces of the metal. R-5½ is fully plated with a zinc dichromatic for an even more superior corrosion resistance, and a golden color that is easy to identify.

STAINLESS STEEL

There are many grades of stainless steel, each having properties that enhance the service life of conveyor belt fasteners. CAI uses three different designations:

RLC is available for RLC-5, RLC-5½, and RLC-6 fasteners. This low-chrome material offers enhanced benefits over regular steel for wear and corrosion.

RC/ TRC is high-chrome stainless plus nickel for high wear areas and acidic conditions. The “RC” or “TRC” series can also be used on magnet belts.

RS is the most non-magnetic grade, available for RS-2, RS-3, TRS-4, and RS-5. All stainless rivets are made of 430 SS, which may exhibit some magnetic properties because of the mill rolls or dies that were used to produce the material, but this is typically not a problem for magnetic belt applications.

R-5 Rivet Fasteners

are used on belts up to 11.1mm thick and 79kN/m. Hinge pins and Riv-Nail selection are made according to belt thickness and style. See pages 18 to 23.

STEEL R-5 RIVET FASTENER

NUMBER
R-5-18
R-5-24
R-5-30
R-5-36
R-5-42
R-5-48
R-5-54
R-5-60
R-5-72

LOW-CHROME STAINLESS RLC-5 RIVET FASTENER

NUMBER
RLC-5-18
RLC-5-24
RLC-5-30
RLC-5-36
RLC-5-42
RLC-5-48
RLC-5-54
RLC-5-60
RLC-5-72

NON-MAGNETIC STAINLESS RS-5 RIVET FASTENER

NUMBER
RS-5-18
RS-5-24
RS-5-30
RS-5-36
RS-5-42
RS-5-48
RS-5-54
RS-5-60
RS-5-72

R-5½ Rivet Fasteners

are used on belts from 9.4 to 15.1mm thick and up to 140kN/m. Hinge pins are found on pages 20 to 23. Riv-Nail selection can be found on pages 18 to 19.

STEEL R-5½ RIVET FASTENER

NUMBER
R-5½-24
R-5½-30
R-5½-36
R-5½-42
R-5½-48
R-5½-54
R-5½-60
R-5½-72

LOW-CHROME STAINLESS RLC-5½ RIVET FASTENER

NUMBER
RLC-5½-24
RLC-5½-30
RLC-5½-36
RLC-5½-42
RLC-5½-48
RLC-5½-54
RLC-5½-60
RLC-5½-72

HIGH-CHROME STAINLESS RC-5½ RIVET FASTENER

NUMBER
RC-5½-24
RC-5½-30
RC-5½-36
RC-5½-42
RC-5½-48
RC-5½-54
RC-5½-60
RC-5½-72



INSTALLATION TOOLS ARE SHOWN ON PAGES 24 TO 28.

R-6 Rivet Fasteners

are used on belts from 10.3 to 19.1mm thick and up to 210kN/m. Hinge pins are found on pages 20 to 23. Riv-Nail selection can be found on pages 18 to 19.

STEEL R-6 RIVET FASTENER

NUMBER
R-6-24
R-6-30
R-6-36
R-6-42
R-6-48
R-6-54
R-6-60
R-6-72

LOW-CHROME STAINLESS RLC-6 RIVET FASTENER

NUMBER
RLC-6-24
RLC-6-30
RLC-6-36
RLC-6-42
RLC-6-48
RLC-6-54
RLC-6-60
RLC-6-72

HIGH-CHROME STAINLESS RC-6 RIVET FASTENER

NUMBER
RC-6-24
RC-6-30
RC-6-36
RC-6-42
RC-6-48
RC-6-54
RC-6-60
RC-6-72

TRC-6 Rivet Fasteners

The TRC-6 is a "true" six-rivet fastener used on belts from 10.3 to 19.1mm thick and up to 263kN/m. An advantage of TRC-6 fasteners is that they can be used on most applications with high belt tension ratings, yet require 25% fewer rivets. This provides for savings in time, materials, and labor.

HIGH-CHROME STAINLESS TRC-6 RIVET FASTENER

NUMBER
TRC-6-48
TRC-6-54
TRC-6-60
TRC-6-72
TRC-6-84

RC-8 Rivet Fasteners

are used on belts from 10.3 to 19.1mm and up to 263kN/m. Hinge pins are found on pages 20 to 23. Riv-Nail selection is found on pages 18 to 19.

HIGH-CHROME STAINLESS RC-8 RIVET FASTENER

NUMBER
RC-8-48
RC-8-54
RC-8-60
RC-8-72
RC-8-84

Rivets,

or Riv-Nails, are an assembly of a rivet and a pilot nail. The rivet is a specially designed, semi-tubular rivet sized to fit a range of conveyor belt thicknesses. The rivet is "up-set" by the upper head of the pilot nail to clinch and maintain compression of the upper and lower plates of the belt fastener. The pilot nail has a point used to guide through the belt and into the anvil setting tool. Upon completion of the belt splice, the rivet and the pilot nail separate.

Steel Rivets

will be color-coded zinc dichromate, a gold color. While zinc dichromate has higher resistance to corrosion than conventional zinc silver, it should not be used for corrosive applications.



STANDARD

250/BOX

ITEM
RN0
RN1
RN2
RNA/B
RNA
RNB
RNC
RNC/D
RND
RNE
RNF
RNG
RNH
RNI

2000/BUCKET

ITEM
RN0-2M
RN1-2M
RN2-2M
RNA/B-2M
RNA-2M
RNB-2M
RNC-2M
RNC/D-2M
RND-2M
RNE-2M
RNF-2M
RNG-2M
RNH-2M
RNI-2M

QUICK LOAD

1000/CARTON

ITEM
RNQL 0
RNQL 1
RNQL 2
RNQL A/B
RNQL A/B
RNQL B
RNQL C
RNQL C/D
RNQL D
RNQL E
RNQL F
RNQL G
RNQL H
RNQL I

Stainless Steel Rivets

are silver or copper color-coded with a zinc "silver" pilot nail. Stainless steel rivets should be used with the RC and RS series stainless fastener strips in situations where rusting may occur.

STANDARD

250/BOX

ITEM
RN0S
RN1S
RN2S
RNA/BS
RNAS
RNBS
RNCS
RNC/DS
RNDS
RNES
RNFS
RNGS
RNHS
RNIS

2000/BUCKET

ITEM
RN0S-2M
RN1S-2M
RN2S-2M
RNA/BS-2M
RNAS-2M
RNBS-2M
RNCS-2M
RNC/DS-2M
RNDS-2M
RNES-2M
RNFS-2M
RNGS-2M
RNHS-2M
RNIS-2M

QUICK LOAD

1000/CARTON

ITEM
RNQL 0
RNQL 1
RNQL 2
RNQL A/B
RNQL A
RNQL B
RNQL C
RNQL C/D
RNQL D
RNQL E
RNQL F
RNQL G
RNQL H
RNQL I

RIV-NAIL SPECIFICATIONS

RIVET SPECIFICATIONS

BELT THICKNESS (MM)	FASTENER SIZE	RIVET SIZE
3.1–4.7	2	0
4.7–6.4	2, 3, 4, 5	1
6.4–7.9	2, 3, 4, 5	2
7.1–10.3	2, 3, 4, 5	A/B
7.1–8.7	2, 3, 4, 5	A
8.7–10.3	2, 3, 4, 5	B
10.3–11.9	4, 5, 5½, 6	C
11.9–13.5	5½, 6, 8	C/D
13.5–15.1	5½, 6, 8	D
15.1–16.7	6, 8	E
16.7–18.3	6, 8	F
18.3–19.8	6, 8	G
19.8–21.4	6, 8	H
21.4–23.0	6, 8	I

NUMBER OF SETS OF RIVETS REQUIRED FOR VARIOUS BELT WIDTHS

BELT WIDTH (MM)	R-2	R-3	TR-4	R-5, R-5½, R-6	TR-6	R-8
450	40	60	80	100	–	–
600	52	78	104	130	–	–
750	64	96	128	160	–	–
900	80	120	160	200	–	–
1050	92	138	184	230	–	–
1200	108	162	216	270	324	432
1350	120	180	240	300	360	480
1500	136	204	272	340	408	544
1800	164	246	328	410	492	656
2100	192	288	384	480	576	768

RIV-NAIL SHIPPING WEIGHT (KG)

SIZE	BOXES	BUCKETS
0	0.9	6.8
1	0.9	7.3
2	1.0	7.7
A	1.1	8.2
A/B, B	1.1	8.6
C	1.2	9.1
C/D	1.3	9.5
D	1.3	10.0
E	1.3	10.9
F	1.3	11.4
G	1.4	11.8
H	1.5	12.3
I	1.6	12.7

NOTES ON PACKAGING

Riv-Nails are available in boxes of 250 and buckets of 2,000. Case quantity in boxes is 10 per case. Quick Loads cartons contain 1,000 rivets per carton. The Bucket Opener pricing can be found on page 43.



INSTALLATION TOOLS ARE SHOWN ON PAGES 24 TO 28.

Hinge Pins

are made of bare steel/stainless cable, nylon-coated steel/stainless cable, bare-armored cable, and nylon-coated armored cable. Pins are available individually or in 10-packs. Careful consideration should be given to the proper selection of the hinge pin for each application.

Order by specifying type of pin and width of belt.

Example: **NC-36** One-pin, nylon-coated steel cable
AC6-48-10 10-pin pack armored coated steel cables
Note: Special lengths available

Hinge Pin Key

NUMBER	STYLE
SC	BARE STEEL CABLE
SSC	BARE STAINLESS CABLE
NC	NYLON-COVERED STEEL CABLE
AC	ARMORED STEEL CABLE
NAC	NYLON-ARMORED STEEL CABLE
NCS	NYLON-COVERED STAINLESS CABLE
SC932	BARE STEEL CABLE HEAVY
SSC932	BARE STAINLESS CABLE HEAVY
SC6	BARE STEEL CABLE HEAVY XXH
AC6	ARMORED STEEL CABLE
NAC6	NYLON-ARMORED STEEL CABLE
SAC6	ALL-STAINLESS ARMORED CABLE
SAC6-SP	ALL-STAINLESS ARMORED HEAVY-DUTY

HINGE PIN SELECTOR



	SC	SSC	NC	AC	NAC	NCS	SC932	SSC932	SC6	AC6	NAC6	SAC6	SAC6-SP
R-2, R-3	•	•	•	•	•	•							
TR-4, R-5	•	•	•	•	•	•	•	•					
R-5½									•	•	•	•	
R-6									•	•	•		•
TR-6, R-8									•	•	•		•

R-2, R-3, TR-4,

R-5 Hinge Pins are available in both bare cable or armor wrapped cable. They are also available with nylon coatings. The overall outside diameter is a nominal 6.4mm for the R-2, R-3, TR-4, and R-5 series fasteners.

SC BARE STEEL CABLE

NUMBER
SC-18
SC-24
SC-30
SC-36
SC-42
SC-48
SC-54
SC-60
SC-18-10
SC-24-10
SC-30-10
SC-36-10
SC-42-10
SC-48-10
SC-54-10
SC-60-10

10/PACK

SSC BARE STAINLESS CABLE

NUMBER
SSC-18
SSC-24
SSC-30
SSC-36
SSC-42
SSC-48
SSC-54
SSC-60
SSC-18-10
SSC-24-10
SSC-30-10
SSC-36-10
SSC-42-10
SSC-48-10
SSC-54-10
SSC-60-10

10/PACK



INSTALLATION TOOLS ARE SHOWN ON PAGES 24 TO 28.

NC NYLON-COVERED STEEL CABLE

	NUMBER
10/PACK	NC-18
	NC-24
	NC-30
	NC-36
	NC-42
	NC-48
	NC-54
	NC-60
	NC-18-10
	NC-24-10
	NC-30-10
	NC-36-10
	NC-42-10
	NC-48-10
	NC-54-10
	NC-60-10

NCS NYLON-COVERED STAINLESS CABLE

	NUMBER
10/PACK	NCS-18
	NCS-24
	NCS-30
	NCS-36
	NCS-42
	NCS-48
	NCS-54
	NCS-60
	NCS-18-10
	NCS-24-10
	NCS-30-10
	NCS-36-10
	NCS-42-10
	NCS-48-10
	NCS-54-10
	NCS-60-10

SELECTING HINGE PINS

Hinge pins are selected based on the size of the fastener, the width of the belt, and the nature of the application. Consult our Hinge Pin Selector on page 20.

Bare-cable or armored-cable hinge pins are used when the pins need to be frequently withdrawn, or when the materials being conveyed are abrasive.

Nylon-coated and nylon-armored hinge pins are used when the pins tend to be in place permanently. The loops of the belt fastener bite into the cover and lock the pin into position, aiding in the prevention of the hinge pin migrating outside the belt fastener.

R-2, R-3, TR-4, and R-5 series hinge pins are found on pages 20 to 22. R-5½, R-6, TR-6, and R-8 series hinge pins are found on pages 22 to 23.

AC ARMORED STEEL CABLE

	NUMBER
10/PACK	AC-18
	AC-24
	AC-30
	AC-36
	AC-42
	AC-48
	AC-54
	AC-60
	AC-18-10
	AC-24-10
	AC-30-10
	AC-36-10
	AC-42-10
	AC-48-10
	AC-54-10
	AC-60-10

R5RW RETAINING WASHER

The Rivet Hinge fastener is a live, working joint. Low belt tension and/or conveyor misalignment can cause the hinge pin to migrate from inside the loop. To help prevent migration, specially formed washers are used to swage onto the ends of the hinge pins. The R5RW fits only the R-2 through R-5 series.

NUMBER	DESCRIPTION
R5RW	50/PACK



NAC NYLON-ARMORED STEEL CABLE

	NUMBER
10/PACK	NAC-18
	NAC-24
	NAC-30
	NAC-36
	NAC-42
	NAC-48
	NAC-54
	NAC-60
	NAC-18-10
	NAC-24-10
	NAC-30-10
	NAC-36-10
	NAC-42-10
	NAC-48-10
	NAC-54-10
	NAC-60-10

SSC932 BARE STAINLESS CABLE HEAVY

	NUMBER
10/PACK	SSC-932-24
	SSC-932-30
	SSC-932-36
	SSC-932-42
	SSC-932-48
	SSC-932-54
	SSC-932-60
	SSC-932-72
	SSC-932-24-10
	SSC-932-30-10
	SSC-932-36-10
	SSC-932-42-10
	SSC-932-48-10
	SSC-932-54-10
	SSC-932-60-10
	SSC-932-72-10

SC932 BARE STEEL CABLE HEAVY

	NUMBER
10/PACK	SC-932-24
	SC-932-30
	SC-932-36
	SC-932-42
	SC-932-48
	SC-932-54
	SC-932-60
	SC-932-72
	SC-932-24-10
	SC-932-30-10
	SC-932-36-10
	SC-932-42-10
	SC-932-48-10
	SC-932-54-10
	SC-932-60-10
	SC-932-72-10

R-5½, R-6, TR-6, R-8 Hinge Pins

are available in both bare cable and armor-wrapped cable. They are also available with nylon coatings. The overall outside diameters are a nominal 9.5mm or larger for the R-5½, R-6, TR-6, and R-8 series.

SC6 BARE STEEL CABLE XX-HEAVY

	NUMBER
10/PACK	SC6-24
	SC6-30
	SC6-36
	SC6-42
	SC6-48
	SC6-54
	SC6-60
	SC6-72
	SC6-24-10
	SC6-30-10
	SC6-36-10
	SC6-42-10
	SC6-48-10
	SC6-54-10
	SC6-60-10
	SC6-72-10



INSTALLATION TOOLS ARE SHOWN ON PAGES 24 TO 28.

AC6
ARMORED STEEL CABLE

	NUMBER
10/PACK	AC6-24
	AC6-30
	AC6-36
	AC6-42
	AC6-48
	AC6-54
	AC6-60
	AC6-72
	AC6-24-10
	AC6-30-10
	AC6-36-10
	AC6-42-10
	AC6-48-10
	AC6-54-10
	AC6-60-10
	AC6-72-10

SAC6
ALL STAINLESS ARMORED CABLE

	NUMBER
10/PACK	SAC6-24
	SAC6-30
	SAC6-36
	SAC6-42
	SAC6-48
	SAC6-54
	SAC6-60
	SAC6-72
	SAC6-24-10
	SAC6-30-10
	SAC6-36-10
	SAC6-42-10
	SAC6-48-10
	SAC6-54-10
	SAC6-60-10
	SAC6-72-10

NAC6
NYLON-ARMORED STEEL CABLE

	NUMBER
10/PACK	NAC6-24
	NAC6-30
	NAC6-36
	NAC6-42
	NAC6-48
	NAC6-54
	NAC6-60
	NAC6-72
	NAC6-24-10
	NAC6-30-10
	NAC6-36-10
	NAC6-42-10
	NAC6-48-10
	NAC6-54-10
	NAC6-60-10
	NAC6-72-10

SAC6-SP
**ALL STAINLESS ARMORED
HEAVY-DUTY CABLE**

	NUMBER
10/PACK	SAC6-24-SP
	SAC6-30-SP
	SAC6-36-SP
	SAC6-42-SP
	SAC6-48-SP
	SAC6-54-SP
	SAC6-60-SP
	SAC6-72-SP
	SAC6-24-SP-10
	SAC6-30-SP-10
	SAC6-36-SP-10
	SAC6-42-SP-10
	SAC6-48-SP-10
	SAC6-54-SP-10
	SAC6-60-SP-10
	SAC6-72-SP-10

SAC6RET RETAINING CLIPS

The Rivet Hinge fastener is a live, working joint. Low belt tension and/or conveyor misalignment can cause the hinge pin to migrate from inside the loop. A special retaining clip has been designed for the larger R-5½, R-6, TR-6, and R-8 series. The SAC6RET is swaged on the ends of the hinge pin.

NUMBER	DESCRIPTION
--------	-------------

SAC6RET	50/PACK
---------	---------



Riv-Nail Rapid Install System

The fastest, easiest, and safest systems to install Riv-Nail Conveyor Belt Fasteners.

CAI introduced the first air powered tools in 1993 to drive rivets for conveyor belt fasteners. Then in 2005 and again in 2006, electric corded plus battery-driven units were introduced to drive single rivets. Now, the CAI AP Driver is the first tool to "drive and set" up to five rivets at a time. The AP Driver is "Mine Duty and Shop Friendly."



Choose Your Hammer



AIR-POWERED HAMMER KIT

The RNAPD-KIT System includes one complete AP (air powered*) Driver, two RNAPD-5 Rivet Drivers, one In-Line Oiler, one 15.3m 12.7mm hose assembly, one High Flow Regulator 12.7mm with gauge, two 237mL bottles of oil, one Oiler Wrench, one Coil Puller, and a Storage Box.

*Air compressor required

NUMBER

RNAPD-KIT

Air-Powered Hammer Accessories

NUMBER	DESCRIPTION
APD-1	AIR POWERED HAMMER
AP5P	RIVET PUNCH
APO	IN-LINE OILER
APH-50	15.3m 12.7mm HOSE ASSEMBLY
APR-1/2	HIGH FLOW REGULATOR W/GAUGE
APO-8	APD OIL — HEAVY DUTY 237mL
APO-8-12	APD OIL — HEAVY DUTY (12-PACK)
APOW	AP OILER WRENCH
APCP	AP COIL PULLER
APTC	AP TOOL CHEST

ELECTRIC HAMMERS

The **battery-powered hammer***, at 4.3Kg. with a powerful 36V battery, feels lighter than most with its ergonomically balanced design. Fast yet safe, this tool of choice lessens the fatigue of the splice team. Complete with two Litheon 36VDC batteries and a charger.

The **corded hammer*** is light to handle, utilizes 120VAC, draws only 6½ amps, generates more than 3,500 blows per minute, and provides a generous 3.1m power cord.

*Bosch three-year warranty. Drive rod not included.



NUMBER DESCRIPTION

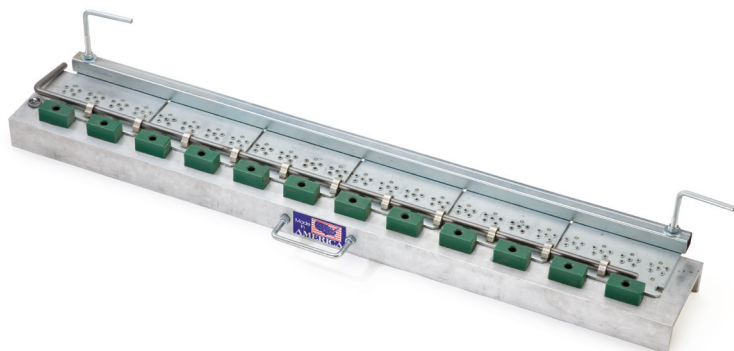
RNBH-1	BOSCH 36V BATTERY-POWERED HAMMER
RNEH-1	BOSCH CORDED HAMMER

Electric Hammer Accessories

NUMBER DESCRIPTION

RNDP-1	SDS DRIVE ROD
RN-BAT836	36VDC ION BATTERY
RN-BC830	BATTERY CHARGER

2 Choose Your Multi-Tool



The Riv-Nail Multi-Tool is designed and built with lightweight aluminum and ultra-high molecular weight (UHMW) polyethylene locator guides mounted directly on the top of the channel. Patented anvil plates set the rivets.

MULTI-TOOL WITH 6.4MM GAUGE ROD

For use with R-2 through R-6

NUMBER

RNAT-36-MDA1
RNAT-42-MDA1
RNAT-48-MDA1
RNAT-54-MDA1
RNAT-60-MDA1
RNAT-72-MDA1
RNAT-84-MDA1

MULTI-TOOL WITH 11.1MM GAUGE ROD

For use with R-5½ and R-6

NUMBER

RNAT-36-MDA2
RNAT-42-MDA2
RNAT-48-MDA2
RNAT-54-MDA2
RNAT-60-MDA2
RNAT-72-MDA2
RNAT-84-MDA2

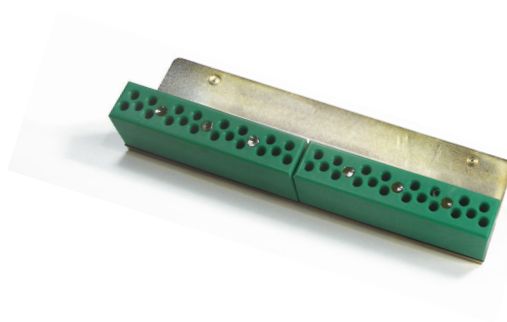
RC-8 MULTI-TOOL WITH 11.1MM GAUGE ROD

For use with TRC-6 and RC-8

NUMBER

RNAT-60/8-MDA2
RNAT-72/8-MDA2
RNAT-84/8-MDA2

3 Choose Your Guide Block



Riv-Nail Guide Blocks are available in 20- and 40-rivet capacities. Lightweight, wear-resistant UHMW polyethylene and pilot nail guides provide the most accurate placement of rivets in the belt splice.

5 RIV-NAIL GUIDE BLOCK

20 Rivets/block

NUMBER

RN500

5 RIV-NAIL DOUBLE WIDE GUIDE BLOCK

40 Rivets/block

NUMBER

RN500DW

8 RIV-NAIL GUIDE BLOCK

32 Rivets/block

NUMBER

RN800

8 RIV-NAIL DOUBLE WIDE GUIDE BLOCK

64 Rivets/block

NUMBER

RN800DW

5-PILOT NAIL GUIDE REPLACEMENT STRIP

NUMBER

RNGS-5

8-PILOT NAIL GUIDE REPLACEMENT STRIP

NUMBER

RNGS-8

Riv-Nail Manual Systems

CAI has both single and multiple hammer driven tooling systems for maximum flexibility in the shop or in the field. Lightweight aluminum tools have been our standard since 1993.



Riv-Nail Single-Driver System

For many applications, the manual Riv-Nail Single-Driver System is quick and reliable. Only a hammer and our manual application tool are required. While most 0.5 to 1.5Kg. well-balanced hammers will drive the Riv-Nail through the belt, the best hammer for the job is a 1Kg. "dead blow." An average of only three blows will set the rivet, using the patented Riv-Nail Application Tool. Hammer not included.

NUMBER

RNAT-24
RNAT-30
RNAT-36
RNAT-42
RNAT-48
RNAT-54
RNAT-60
RNAT-72



Riv-Nail Multi-Driver Complete Tool Kit

All Multi-Driver Tool Kits include the application tool, two Rivet Guide Blocks, two RNMDP-5 Rivet Drivers, two RNMH-4 Hammers (2Kg.), one BG-96 Belt Gauge, one SL-8 Silicone Spray, and one Tote Bag.

MULTI-DRIVER TOOL KIT WITH 6.4MM GAUGE ROD FOR R-2 THROUGH R-6 SERIES

NUMBER

MRNAT-36
MRNAT-42
MRNAT-48
MRNAT-60
MRNAT-72
MRNAT-84

MULTI-DRIVER TOOL KIT WITH 11.1MM GAUGE ROD FOR R-5½ AND R-6 SERIES

Heavy-Duty Gauge Rod helps control splices during installation.

NUMBER

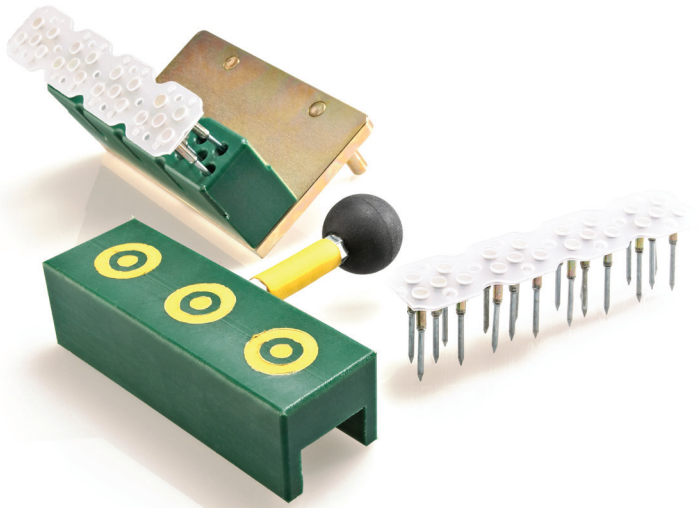
MRNAT-42-MDA2
MRNAT-48-MDA2
MRNAT-54-MDA2
MRNAT-60-MDA2
MRNAT-72-MDA2
MRNAT-84-MDA2

MULTI-DRIVER TOOL KIT 11.1MM GAUGE ROD FOR TR-6 AND R-8 SERIES

Heavy-Duty Gauge Rod helps control splices during installation.

NUMBER

MRNAT-60/8-MDA2
MRNAT-72/8-MDA2
MRNAT-84/8-MDA2



Quick Load Guide Blocks

Specifically designed for Quick Loads. Available in 20 and 32 rivet capacities. Release tool is used to drop rivets from collated strips in Guide Blocks.

5 RIV-NAIL GUIDE BLOCK

NUMBER

RNQL 500
RNQL 500-DW

5 RIV-NAIL DOUBLE WIDE GUIDE BLOCK

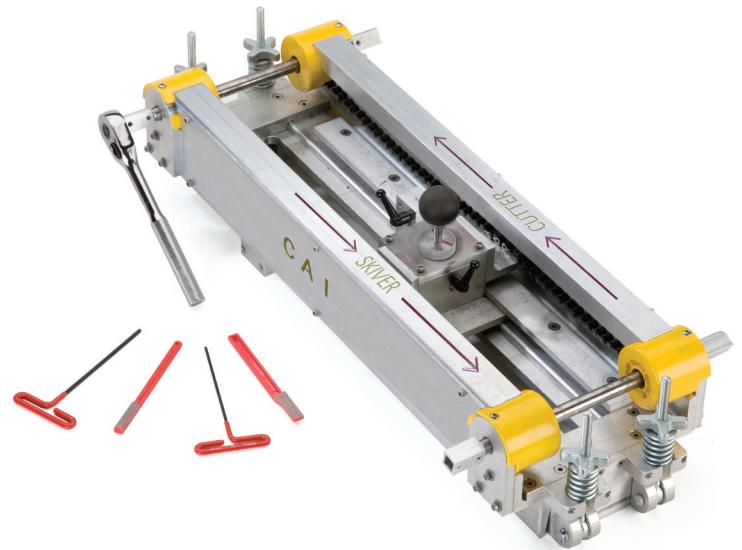
NUMBER

RNQL 800
RNQL 800DW

8 RIV-NAIL GUIDE BLOCK

NUMBER

RNQL-500R
RNQL-800R



Skiver/Cutter

This new and innovative tool will skive your belt to the exact required dimensions and cut it, all in one setup. Typical belt splice preparation is required. Edge Stops are located on both sides of the tool to center the belt.

NUMBER WIDTH (MM)

SKCU-36	900
SKCU-48	1200
SKCU-54	1350
SKCU-60	1500
SKCU-72	1800
SKCU-84	2100

SKIVER/CUTTER EXTRA SUPPLIES

NUMBER DESCRIPTION

SKCU-CBK1	CUTTER BLADE KIT
SKCU-SBK1	SKIVER BLADE KIT
SKCU-RAT	RATCHET
SKCU-FK1	DIAMOND FILE KIT

INSTALLATION INSTRUCTIONS

Get installation instructions for this and other Conveyor Accessories products online at: www.conveyoraccessories.com/instructions

Riv-Nail Tools, Accessories & Extra Supplies



2Kg. Hammer

350mm fiberglass handle for use with rivet punches

NUMBER

RNMH-4



Silicone Spray

NUMBER DESCRIPTION

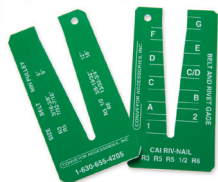
SL-8	INDIVIDUAL BOTTLE
SL-8-12	12-PACK



Multi-Driver Rivet Punch with Safety Knob

NUMBER

RNMDP-5



Belt and Rivet Gauge

NUMBER

BG-96



Single Driver Punch with Cushion Grip

NUMBER

RNSDP-1

Guide Locator — Low Form

6.4 Gauge Rod—19mm high

NUMBER

RNGL-1

Guide Locator — High Form

11.1 Gauge Rod—25mm high

NUMBER

RNGL-2